



MLS 7050762 Land

\$144,900

0.97 Acres
Plat Designed

TRACT B Linden Street
Garrison MN 56450

Status: Active

Description:

Just under 1 acre of land accessible to Mille Lacs Lake—one of Minnesota’s largest lakes—offering incredible views and endless recreational opportunities.

Ideally situated nearby to North of Northwood Hills Golf Course and just a few minutes from Grand Casino Mille Lacs, this property combines convenience with a peaceful “Up North” setting.

Have you been dreaming of a quiet getaway where you can escape and unwind? This scenic parcel offers the perfect opportunity to build your dream cabin or lake home—all without the high cost of direct lakefront taxes. Enjoy beautiful views of the lake PLUS potential access for a dock along the shoreline.

With the convenient use of a private road (easement) just off Highway 169, this property is easily accessible and well-suited for camping or future building site. Bring your home building plans and design ideas so you can truly make this space your own. There is also excellent potential for a pole building—ideal for storing your boat and fishing gear if you frequent the lake.

Mille Lacs Lake is well known for its outstanding fishing, boating, and year-round recreation. The property is also near snowmobile trails that run North to Garrison and surrounded by local amenities including Brainerd area restaurants, entertainment, and endless outdoor activities.

Additional opportunity: Two adjacent 1-acre lots are also available—combine all three parcels for a total of approximately 3 acres! See additional MLS 7050952 & 7050941.

Enjoy everything this area has to offer: golf, fishing, boating, water sports, trails, and nearby state parks—all just 6 miles south of Garrison.

Come take a look and start planning your Up North escape!

Additional Details:

Year Built	2018
Lot Acres	0.97
Lot Dimensions	115x435x100x400
School District	1792
Taxes	\$200
Taxes with Assessments	\$200

Listed By: 2025
RE/MAX Northland

Additional Features:
Affinity Real Estate Inc. participates in the Regional Multiple Listing Service of Minnesota, Inc Broker Reciprocity (sm) program, allowing us to display other broker’s listings on our website. All properties are subject to prior sale, change or withdrawal.

Driving Directions:
GPS Recommended: From Garrison, follow HWY 169 south to Linden St, turn right and the property (SEE FOR SALE SIGN) is immediately on your right, 3 separate 1 acre lots available.



Call Affinity Real Estate
218-237-3333
info@affinityrealestate.com



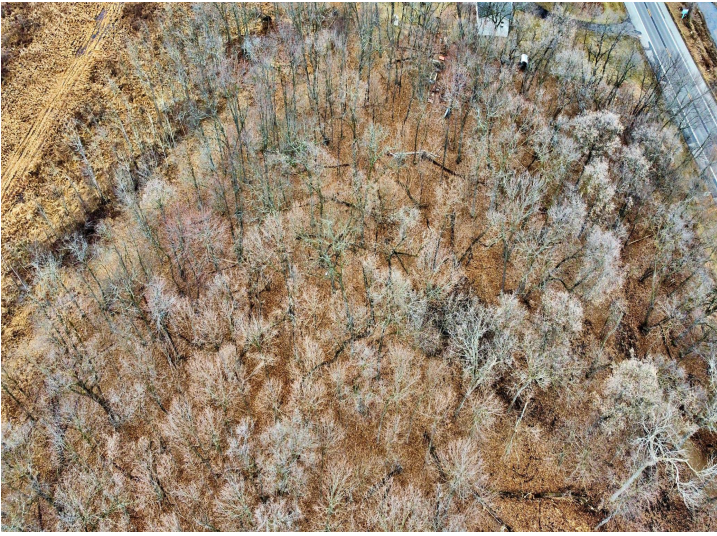
Affinity Real Estate - 600 Park Avenue South - Park Rapids MN 56470



website: www.AffinityRealEstate.com | email: info@affinityrealestate.com | office: 218-237-3333 | fax: 218-237-3377



\$144,900
 MLS 7050762 Land
 TRACT B Linden Street
 Garrison MN 56450



website: www.AffinityRealEstate.com | email: info@affinityrealestate.com | office: 218-237-3333 | fax:218-237-3377



\$144,900
MLS 7050762 Land
TRACT B Linden Street
Garrison MN 56450



website: www.AffinityRealEstate.com | email: info@affinityrealestate.com | office: 218-237-3333 | fax: 218-237-3377

Affinity
REAL ESTATE INC

\$144,900
MLS 7050762 Land
TRACT B Linden Street
Garrison MN 56450



website: www.AffinityRealEstate.com | email: info@affinityrealestate.com | office: 218-237-3333 | fax:218-237-3377



\$144,900
MLS 7050762 Land
TRACT B Linden Street
Garrison MN 56450