



MLS 7050818 Land

\$11,000

0.19 Acres
Finished Lot(s)

xxx TBD Squirrel Drive
Breezy Point MN 56472

Status: Active



Description:

Nice wooded lot. Currently and investment property or combine with other lots to complete a build. Prefer quick close. Quit claim deed.

Additional Details:

Lot Acres	0.19
Lot Dimensions	65x130x65x130
School District	909
Taxes	\$34
Taxes with Assessments	\$38
Tax Year	2026

Additional Features:

Driving Directions:

Travel toward the Pequot Lakes area using MN-371. Exit MN-371 and follow local roads toward residential areas in Pequot Lakes. Turn onto Squirrel Dr. Continue on Squirrel Dr to reach the property location.



Listed By:
Coldwell Banker Realty

Affinity Real Estate Inc. participates in the Regional Multiple Listing Service of Minnesota, Inc Broker Reciprocity (sm) program, allowing us to display other broker's listings on our website. All properties are subject to prior sale, change or withdrawal.



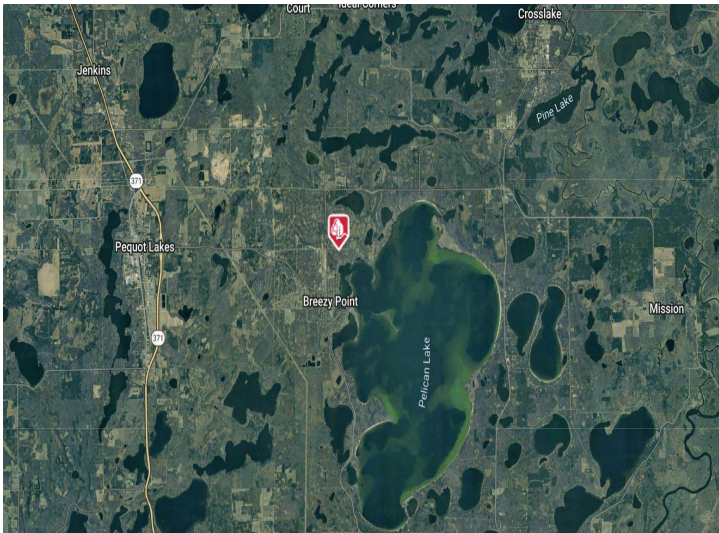
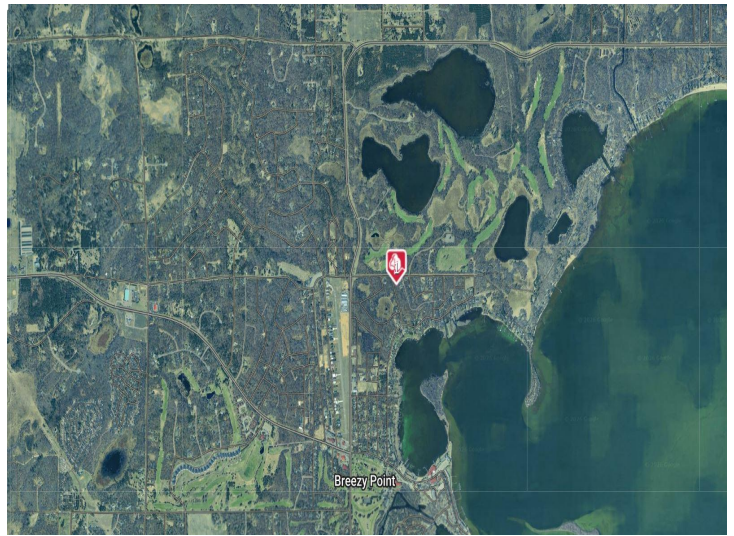
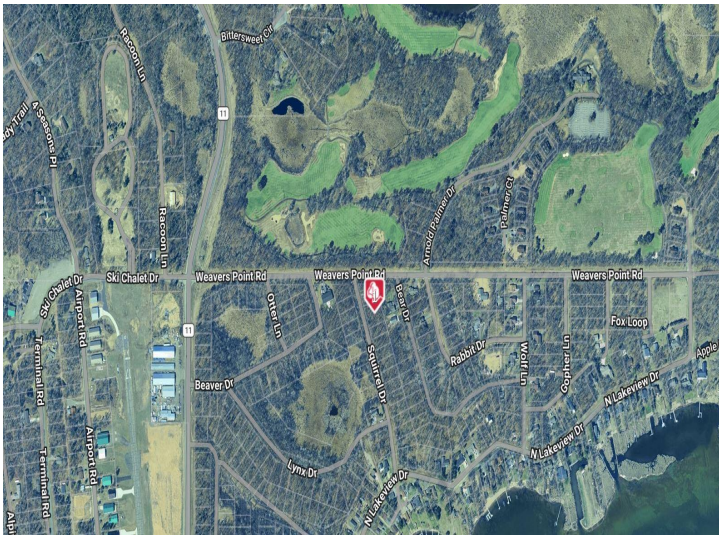
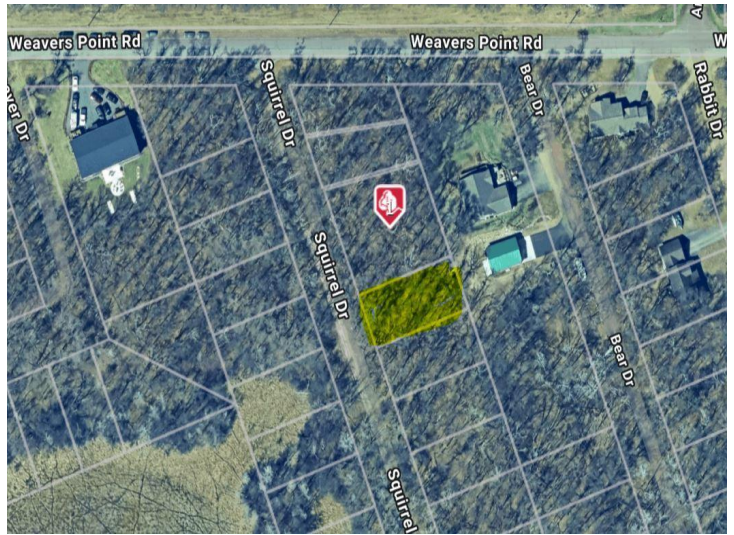
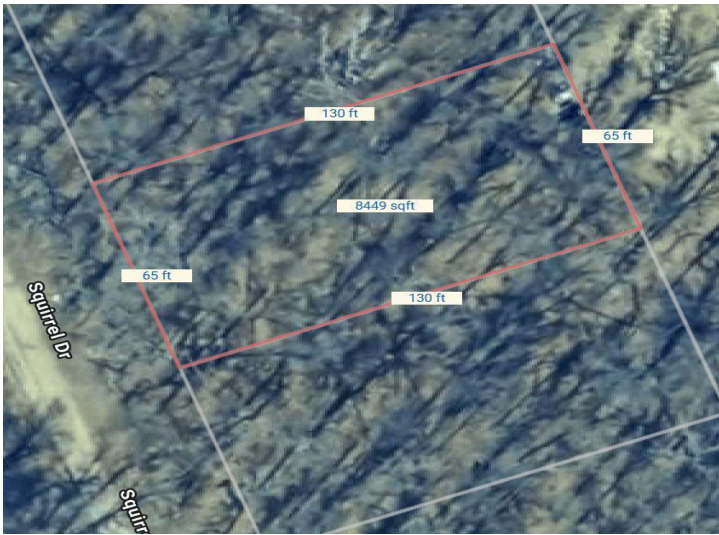
Call Affinity Real Estate

218-237-3333

info@affinityrealestate.com



Affinity Real Estate - 600 Park Avenue South - Park Rapids MN 56470



website: www.AffinityRealEstate.com | email: info@affinityrealestate.com | office: 218-237-3333 | fax:218-237-3377



\$11,000
 MLS 7050818 Land
 xxx TBD Squirrel Drive
 Breezy Point MN 56472