



MLS 7051440 Lake Home

\$995,654

2,549 sq ft
4 bedrooms
3 baths

17731 Gayle Drive
Little Falls MN 56345

Waterfront: Mississippi River

Status: Coming Soon

Description:

Set along the river with breathtaking, uninterrupted views, this exceptional one-level property offers a rare opportunity to experience luxury in perfect harmony with nature. With protected state park land just across the water, your view remains untouched, creating a setting that feels both private and timeless.

Designed for effortless living, this one-level property features wide hallways and doorways, lever handles, no interior or exterior stairs, grab bars, and a roll-in shower blends refined craftsmanship with thoughtful functionality. Expansive windows invite natural light into every corner, creating a seamless connection between indoor comfort and the beauty of the outdoors. Clean lines, high-end finishes, and a modern aesthetic define the space, while in-floor heat adds a layer of everyday comfort and warmth.


Every detail has been considered to support a true forever lifestyle, where ease, elegance, and comfort come together. Whether you are seeking a primary property or a retreat from the pace of everyday life, this property delivers a setting that is both elevated and grounding.

This is more than a property. It is a place to slow down, take in the view, and experience a level of living that truly stands apart.

Additional Details:

| | |
|------------------------|-----------------|
| Year Built | 2022 |
| Lot Acres | 1.14 |
| Lot Dimensions | 167x329x203x369 |
| Garage Stalls | 2.5 |
| School District | 482 |
| Taxes | \$6,457 |
| Taxes with Assessments | \$8,462 |
| Tax Year | 2026 |

Additional Features:


 Listed By: LPT Realty, LLC
 Heating: Central Air
 Garage: 2.5
 Heat: Boiler, Forced Air
 Sewer: City Sewer/Connected, City Sewer - In Street

Driving Directions: Affinity Real Estate Inc. participates in the Regional Multiple Listing Service of Minnesota, Inc. Broker Reciprocity (sm) program, allowing us to display other broker's listings on our website. All properties are subject to prior sale, change or withdrawal.



Call Affinity Real Estate
218-237-3333
info@affinityrealestate.com



Affinity Real Estate - 600 Park Avenue South - Park Rapids MN 56470



website: www.AffinityRealEstate.com | email: info@affinityrealestate.com | office: 218-237-3333 | fax:218-237-3377

Affinity
REAL ESTATE INC

\$995,654
MLS 7051440 Lake Home
17731 Gayle Drive
Little Falls MN 56345



website: www.AffinityRealEstate.com | email: info@affinityrealestate.com | office: 218-237-3333 | fax: 218-237-3377

Affinity
REAL ESTATE INC

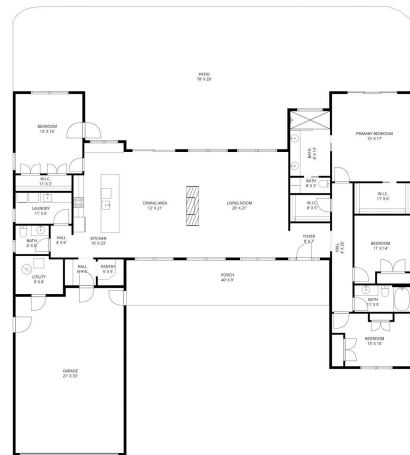
\$995,654
MLS 7051440 Lake Home
17731 Gayle Drive
Little Falls MN 56345



website: www.AffinityRealEstate.com | email: info@affinityrealestate.com | office: 218-237-3333 | fax: 218-237-3377

Affinity
REAL ESTATE INC

\$995,654
MLS 7051440 Lake Home
17731 Gayle Drive
Little Falls MN 56345



Floor Plan Created By CubiCasa App. Measurements Deemed Highly Reliable But Not Guaranteed.

website: www.AffinityRealEstate.com | email: info@affinityrealestate.com | office: 218-237-3333 | fax:218-237-3377



\$995,654
MLS 7051440 Lake Home
17731 Gayle Drive
Little Falls MN 56345