



MLS 7051490 Commercial

\$250,000

11101 Toy Box Lane
Audubon MN 56511

Status: Active

Description:

The Dream Garage- not one thing overlooked in this storage building, workshop or can be an entertaining room. This is a 38X48 building with a 10 ft service door. It has a geothermal heating system, a holding tank for bathroom and a private well. There are epoxied floors, a full bar with dishwasher, ice machine, microwave, 2 refrigerators including a wine refrigerator. This unit is ready for entertaining.

Additional Details:

Year Built	2014
Lot Acres	13.9
Lot Dimensions	38x48
Garage Stalls	1
School District	1074
Taxes	\$1
Taxes with Assessments	\$1
Tax Year	2026

Additional Features:

Fuel: Array **Garage:** 1 **Heat:** Geothermal **Sewer:** Septic System Compliant - Yes **Water:** Private

Driving Directions:

From Hwy 10 W to Audubon turn left onto Co. Hwy 11. (9 mi) Follow Co Rd 138 to Cormorant Heights Rd. Units will be on left.



Listed By:
Action Realty of Detroit Lakes

Affinity Real Estate Inc. participates in the Regional Multiple Listing Service of Minnesota, Inc Broker Reciprocity (sm) program, allowing us to display other broker's listings on our website. All properties are subject to prior sale, change or withdrawal.



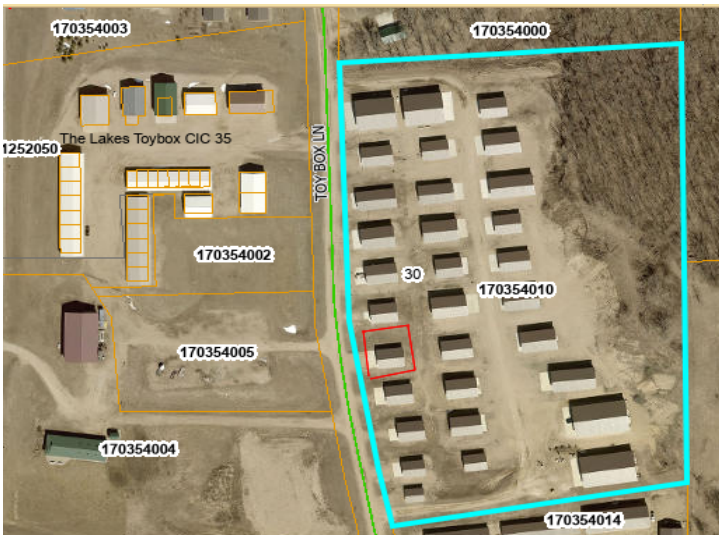
Call Affinity Real Estate

218-237-3333

info@affinityrealestate.com



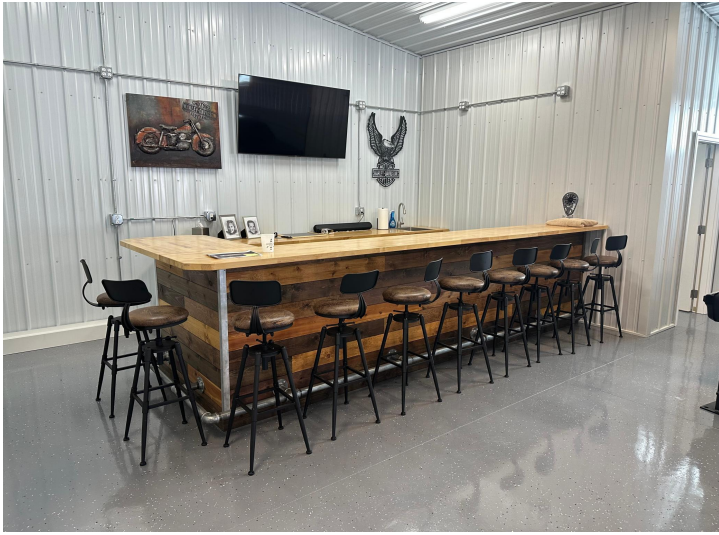
Affinity Real Estate - 600 Park Avenue South - Park Rapids MN 56470



website: www.AffinityRealEstate.com | email: info@affinityrealestate.com | office: 218-237-3333 | fax:218-237-3377



\$250,000
MLS 7051490 Commercial
11101 Toy Box Lane
Audubon MN 56511



website: www.AffinityRealEstate.com | email: info@affinityrealestate.com | office: 218-237-3333 | fax:218-237-3377

Affinity
REAL ESTATE INC

\$250,000
MLS 7051490 Commercial
11101 Toy Box Lane
Audubon MN 56511



website: www.AffinityRealEstate.com | email: info@affinityrealestate.com | office: 218-237-3333 | fax:218-237-3377



\$250,000
MLS 7051490 Commercial
11101 Toy Box Lane
Audubon MN 56511