



MLS 7051508 Land

\$65,000

0.55 Acres
Raw Land

0 Fairview Road
Baxter MN 56425

Status: Active

Description:

Purchase an easy-to-access location in Baxter! This half acre lot is near the new Inglewood Drive & Hwy 210 stoplight intersection. Commercially zoned, this affordable site is ideal for your office-service business. Enjoy high traffic counts and excellent visibility.

Additional Details:

Lot Acres	0.55
Lot Dimensions	103x242x66x51x219
School District	896
Taxes	\$314
Taxes with Assessments	\$1,212
Tax Year	2026

Additional Features:

Driving Directions:

From the Baxter Hwy 210/371 intersection, West on Hwy 210 - North on Inglewood Drive - East on Fairview Road - Property is on the North, just after Glenwood Drive



Listed By:
Close-Converse Commercial Prop

Affinity Real Estate Inc. participates in the Regional Multiple Listing Service of Minnesota, Inc Broker Reciprocity (sm) program, allowing us to display other broker's listings on our website. All properties are subject to prior sale, change or withdrawal.



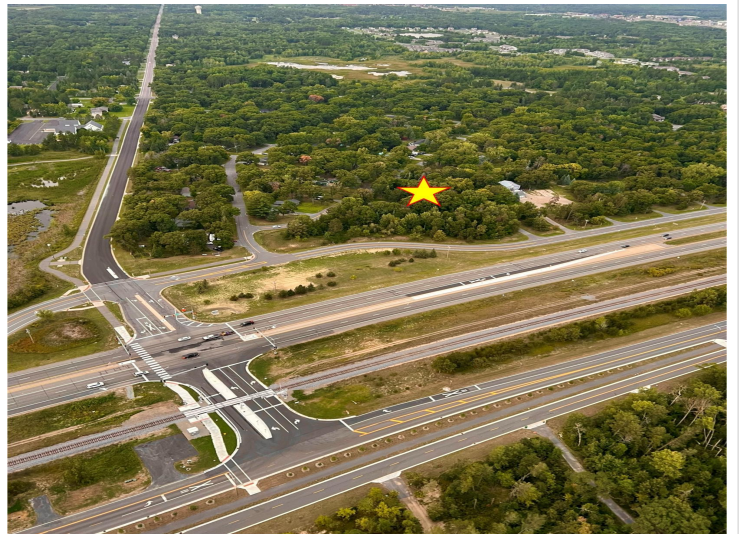
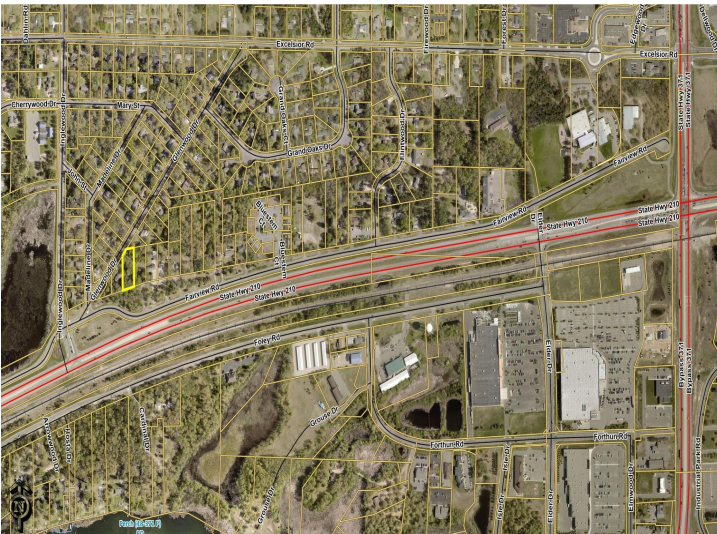
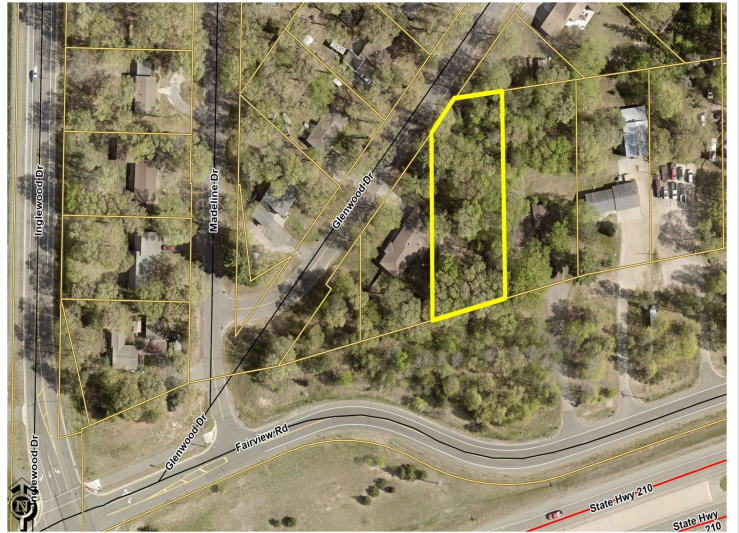
Call Affinity Real Estate

218-237-3333

info@affinityrealestate.com



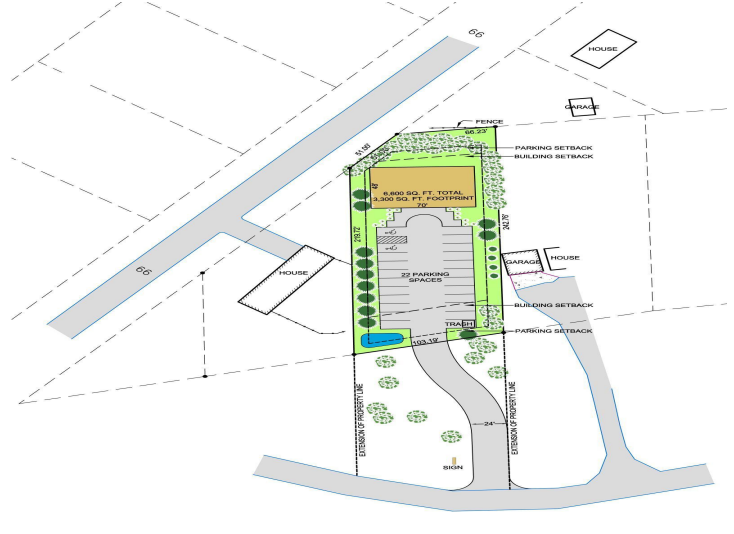
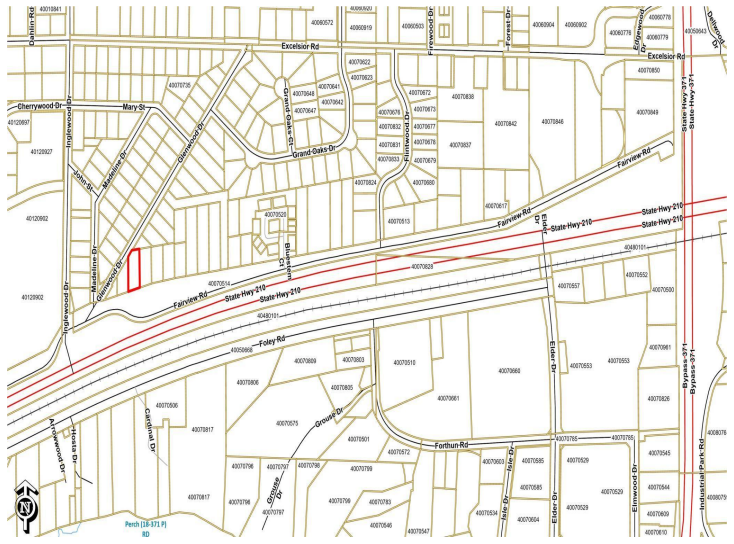
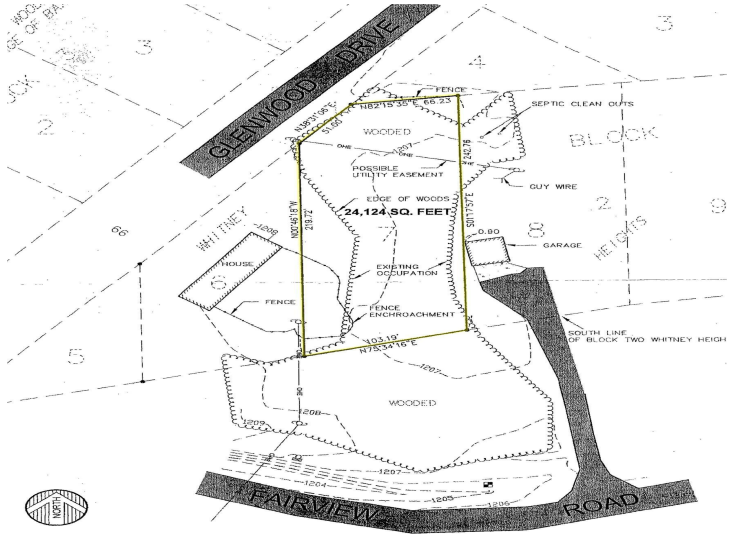
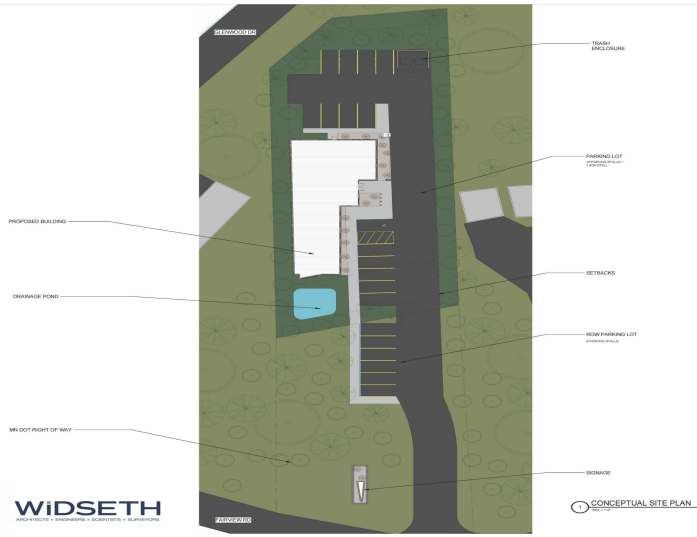
Affinity Real Estate - 600 Park Avenue South - Park Rapids MN 56470



website: www.AffinityRealEstate.com | email: info@affinityrealestate.com | office: 218-237-3333 | fax:218-237-3377

Affinity
REAL ESTATE INC

\$65,000
MLS 7051508 Land
0 Fairview Road
Baxter MN 56425



website: www.AffinityRealEstate.com | email: info@affinityrealestate.com | office: 218-237-3333 | fax: 218-237-3377



\$65,000
 MLS 7051508 Land
 0 Fairview Road
 Baxter MN 56425

