



MLS 7051530 Land

\$19,500

1.05 Acres
Raw Land

L7B1 TBD Ski Chalet Drive
Breezy Point MN 56472

Status: Active

Description:

Beautiful 1-acre lot in the heart of Breezy Point! Surrounded by mature trees and natural beauty, this parcel offers privacy and serenity while being just minutes from championship golf, lakes, dining, and shopping. Whether you're ready to build your year-round home or a peaceful up-north retreat, this property is the perfect canvas. Drive by and see the potential!

Additional Details:

Lot Acres	1.05
Lot Dimensions	115x399.07x115x398.50
School District	909
Taxes	\$210
Taxes with Assessments	\$210
Tax Year	2026

Additional Features:

Driving Directions:

From the intersection of County Road 4 and County Road 11 in Breezy Point, go west on County Road 11, then turn right (north) onto Ranchette Drive. Turn left on Ski Chalet Drive and follow to property on the right.



Listed By:
Larson Group Real Estate/Kelle

Affinity Real Estate Inc. participates in the Regional Multiple Listing Service of Minnesota, Inc Broker Reciprocity (sm) program, allowing us to display other broker's listings on our website. All properties are subject to prior sale, change or withdrawal.



Call Affinity Real Estate

218-237-3333

info@affinityrealestate.com



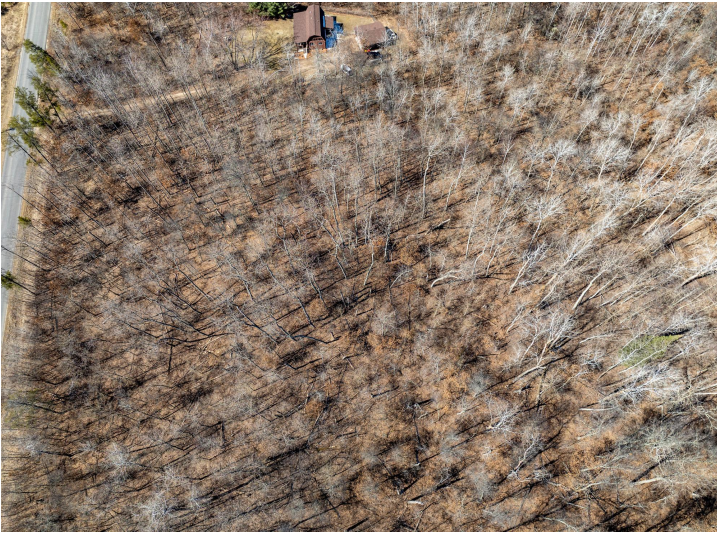
Affinity Real Estate - 600 Park Avenue South - Park Rapids MN 56470



website: www.AffinityRealEstate.com | email: info@affinityrealestate.com | office: 218-237-3333 | fax: 218-237-3377

Affinity
REAL ESTATE INC

\$19,500
MLS 7051530 Land
L7B1 TBD Ski Chalet Drive
Breezy Point MN 56472



website: www.AffinityRealEstate.com | email: info@affinityrealestate.com | office: 218-237-3333 | fax:218-237-3377



\$19,500
MLS 7051530 Land
L7B1 TBD Ski Chalet Drive
Breezy Point MN 56472