



MLS 7051541 Residential

\$259,900

1,214 sq ft
4 bedrooms
2 baths

1408 10th Avenue
Brainerd MN 56401

Status: Coming Soon

Description:

Don't miss this updated 4-bedroom, 2-bathroom home with a 2-car attached garage and a private backyard on a quiet street's end. Inside, you will find all new stainless steel appliances, a new furnace, new water heater, fresh paint, new trim, and updated flooring. Enjoy main-level living, plus a partially finished basement with lots of light, a ¾ bath, and a spacious mechanical room for extra storage. Located near a park and just minutes from all of the shopping, dining, medical facilities, schools, and entertainment of the Brainerd Lakes Area.

Additional Details:

| | |
|------------------------|---------------|
| Year Built | 1960 |
| Lot Acres | 0.2 |
| Lot Dimensions | 100x88x100x88 |
| Garage Stalls | 2 |
| School District | 896 |
| Taxes | \$1,958 |
| Taxes with Assessments | \$1,958 |
| Tax Year | 2025 |

Additional Features:

Basement: Block, Full, Partially Finished, Sump Pump **Fuel:** Array **Garage:** 2 **Heat:** Forced Air **Sewer:** City Sewer/Connected **Water:** City Water/Connected **Air Conditioning:** Central Air

Driving Directions:

Hwy 210 to North on Mill Ave to right on N Street NE to left on 10th Ave NE to property on right.



Listed By:
eXp Realty

Affinity Real Estate Inc. participates in the Regional Multiple Listing Service of Minnesota, Inc Broker Reciprocity (sm) program, allowing us to display other broker's listings on our website. All properties are subject to prior sale, change or withdrawal.



Call Affinity Real Estate

218-237-3333

info@affinityrealestate.com



Affinity Real Estate - 600 Park Avenue South - Park Rapids MN 56470



website: www.AffinityRealEstate.com | email: info@affinityrealestate.com | office: 218-237-3333 | fax: 218-237-3377

Affinity
REAL ESTATE INC

\$259,900
MLS 7051541 Residential
1408 10th Avenue
Brainerd MN 56401



website: www.AffinityRealEstate.com | email: info@affinityrealestate.com | office: 218-237-3333 | fax: 218-237-3377

Affinity
REAL ESTATE INC

\$259,900
MLS 7051541 Residential
1408 10th Avenue
Brainerd MN 56401



website: www.AffinityRealEstate.com | email: info@affinityrealestate.com | office: 218-237-3333 | fax:218-237-3377



\$259,900
MLS 7051541 Residential
1408 10th Avenue
Brainerd MN 56401



website: www.AffinityRealEstate.com | email: info@affinityrealestate.com | office: 218-237-3333 | fax:218-237-3377



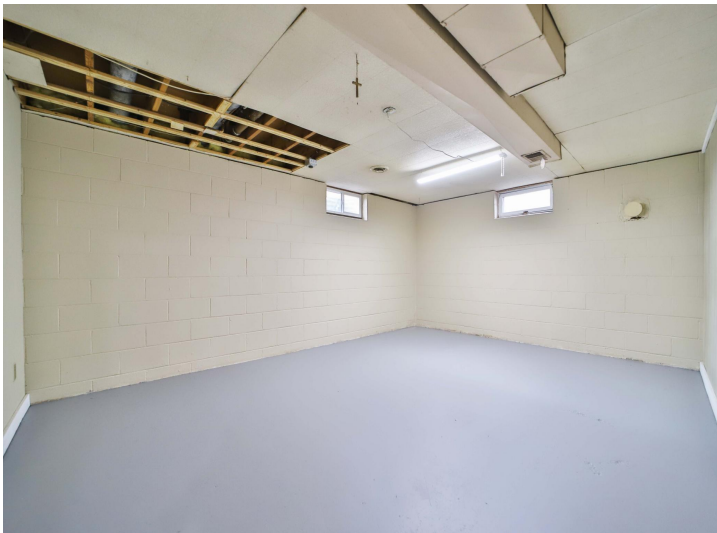
\$259,900
MLS 7051541 Residential
1408 10th Avenue
Brainerd MN 56401



website: www.AffinityRealEstate.com | email: info@affinityrealestate.com | office: 218-237-3333 | fax: 218-237-3377

Affinity
REAL ESTATE INC

\$259,900
MLS 7051541 Residential
1408 10th Avenue
Brainerd MN 56401



website: www.AffinityRealEstate.com | email: info@affinityrealestate.com | office: 218-237-3333 | fax:218-237-3377



\$259,900
MLS 7051541 Residential
1408 10th Avenue
Brainerd MN 56401



website: www.AffinityRealEstate.com | email: info@affinityrealestate.com | office: 218-237-3333 | fax:218-237-3377



\$259,900
MLS 7051541 Residential
1408 10th Avenue
Brainerd MN 56401



website: www.AffinityRealEstate.com | email: info@affinityrealestate.com | office: 218-237-3333 | fax:218-237-3377



\$259,900
MLS 7051541 Residential
1408 10th Avenue
Brainerd MN 56401