



MLS 7051594 Residential

**\$269,900**

2,180 sq ft  
4 bedrooms  
2 baths

24316 200th Street  
Long Prairie MN 56347

Status: Active

**Description:**

Extensively updated home situated on 4+ acres just outside of Long Prairie. Recent improvements to the exterior include new roof, siding, windows, and well (to be installed in April). Interior updates include flooring, paint, cabinets, appliances, plumbing, electrical and interior doors/trim. Move-in ready with major updates already completed—great opportunity for buyers seeking acreage with modern updates.

**Additional Details:**

Year Built	1930
Lot Acres	4.72
Lot Dimensions	440x466
School District	1240
Taxes	\$1,202
Taxes with Assessments	\$1,202
Tax Year	2025

**Additional Features:**

**Basement:** Partial, Concrete, Unfinished **Fuel:** Array **Heat:** Baseboard, Ductless Mini-Split **Sewer:** Private Sewer, Septic System Compliant - Yes **Water:** 4-Inch Submersible, Drilled **Air Conditioning:** Ductless Mini-Split

**Driving Directions:**

From Long Prairie, head South on US 71, Right on 210th St, Left on 243rd Ave, Left on 200th St, Home on left.



Listed By:  
Century 21 First Realty, Inc.

Affinity Real Estate Inc. participates in the Regional Multiple Listing Service of Minnesota, Inc Broker Reciprocity (sm) program, allowing us to display other broker's listings on our website. All properties are subject to prior sale, change or withdrawal.



Call Affinity Real Estate

**218-237-3333**

[info@affinityrealestate.com](mailto:info@affinityrealestate.com)



Affinity Real Estate - 600 Park Avenue South - Park Rapids MN 56470



website: [www.AffinityRealEstate.com](http://www.AffinityRealEstate.com) | email: [info@affinityrealestate.com](mailto:info@affinityrealestate.com) | office: 218-237-3333 | fax: 218-237-3377

**Affinity**  
REAL ESTATE INC

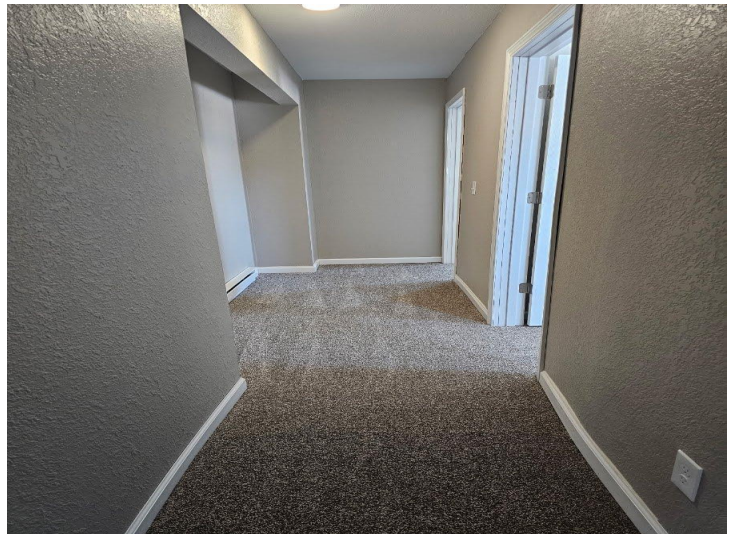
**\$269,900**  
MLS 7051594 Residential  
24316 200th Street  
Long Prairie MN 56347



website: [www.AffinityRealEstate.com](http://www.AffinityRealEstate.com) | email: [info@affinityrealestate.com](mailto:info@affinityrealestate.com) | office: 218-237-3333 | fax: 218-237-3377



**\$269,900**  
MLS 7051594 Residential  
24316 200th Street  
Long Prairie MN 56347



website: [www.AffinityRealEstate.com](http://www.AffinityRealEstate.com) | email: [info@affinityrealestate.com](mailto:info@affinityrealestate.com) | office: 218-237-3333 | fax:218-237-3377



**\$269,900**  
MLS 7051594 Residential  
24316 200th Street  
Long Prairie MN 56347



website: [www.AffinityRealEstate.com](http://www.AffinityRealEstate.com) | email: [info@affinityrealestate.com](mailto:info@affinityrealestate.com) | office: 218-237-3333 | fax: 218-237-3377



**\$269,900**  
MLS 7051594 Residential  
24316 200th Street  
Long Prairie MN 56347