



MLS 7051627 Commercial

**\$1,295,000**

209 Washington Street  
Brainerd MN 56401

Status: Active

**Description:**

Position your business for success at this highly visible commercial corner along the busy Washington Street corridor. This modern building, constructed in 2018 and formerly home to Thrifty White Drug, offers a turn-key opportunity for a medical use or pharmacy with its close proximity to St. Joseph's Hospital. The property features a convenient drive-thru lane, making it ideal for pharmacy, retail, office, or quick-service restaurant concepts. Inside, the building offers a functional layout that can easily accommodate retail showroom space, professional offices, or customer service areas. Customers and employees will appreciate the ample on-site parking, complemented by an additional adjacent parking lot that provides added convenience and flexibility. The prominent corner location delivers excellent visibility, strong traffic counts, and easy access.

**Additional Details:**

Year Built	2018
Lot Acres	0.77
Lot Dimensions	150' x 130' + 93.34' x 150'
School District	896
Taxes	\$13,284
Taxes with Assessments	\$13,284
Tax Year	2026

**Additional Features:**

**Fuel:** Array **Heat:** Forced Air

**Driving Directions:**

From Hwy 210 (Washington Street) / Hwy 371 (S 6th Street) intersection in Brainerd - West on Washington Street 4 blocks - Property is the NE corner of Washington Street and N 2nd Street



Listed By:  
Close-Converse Commercial Prop

Affinity Real Estate Inc. participates in the Regional Multiple Listing Service of Minnesota, Inc Broker Reciprocity (sm) program, allowing us to display other broker's listings on our website. All properties are subject to prior sale, change or withdrawal.



**Call Affinity Real Estate**

**218-237-3333**

**info@affinityrealestate.com**



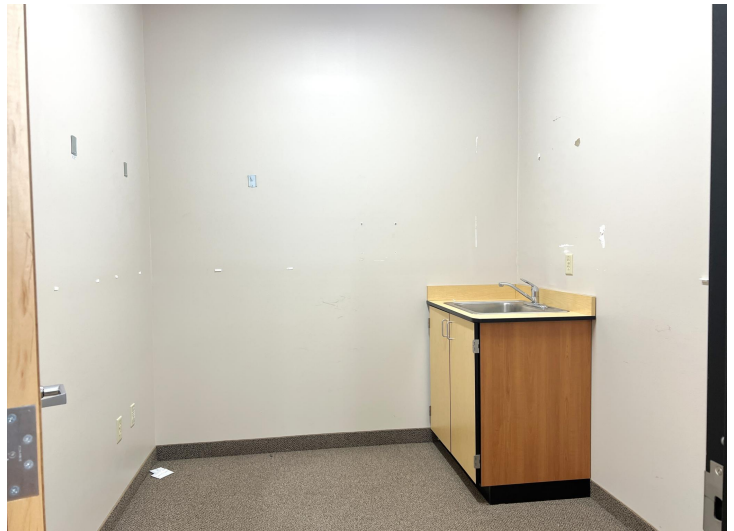
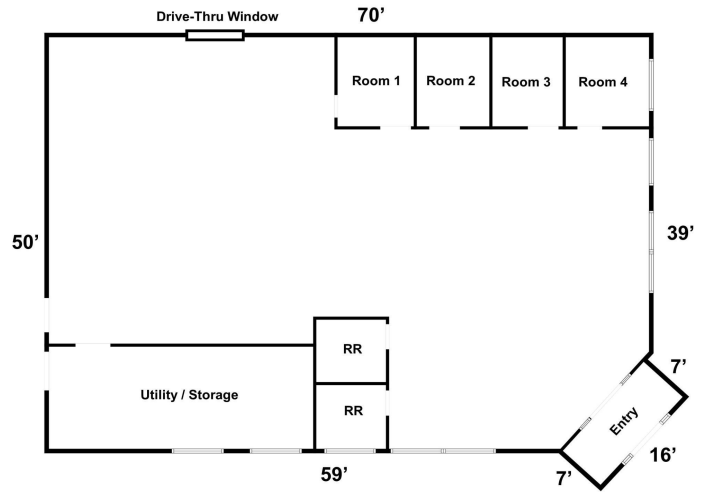
**Affinity Real Estate - 600 Park Avenue South - Park Rapids MN 56470**



website: [www.AffinityRealEstate.com](http://www.AffinityRealEstate.com) | email: [info@affinityrealestate.com](mailto:info@affinityrealestate.com) | office: 218-237-3333 | fax:218-237-3377



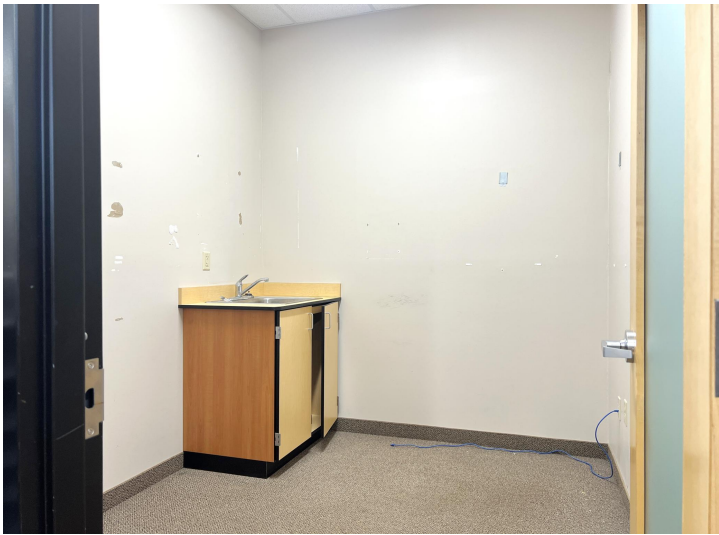
**\$1,295,000**  
MLS 7051627 Commercial  
209 Washington Street  
Brainerd MN 56401



website: [www.AffinityRealEstate.com](http://www.AffinityRealEstate.com) | email: [info@affinityrealestate.com](mailto:info@affinityrealestate.com) | office: 218-237-3333 | fax:218-237-3377



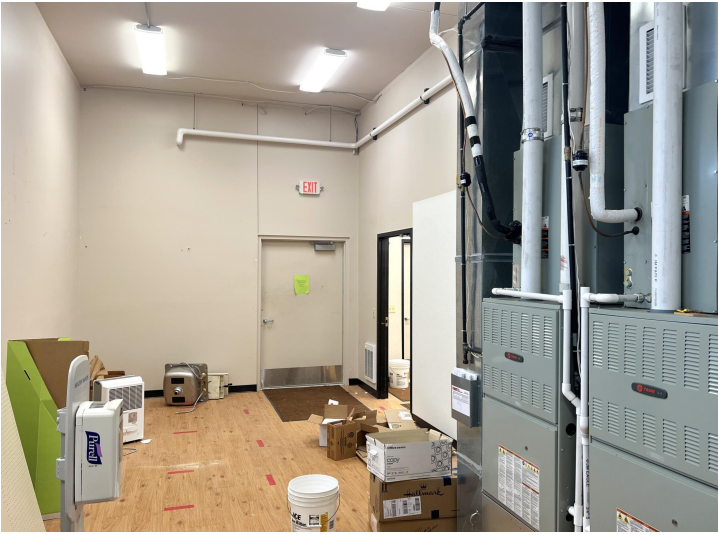
**\$1,295,000**  
 MLS 7051627 Commercial  
 209 Washington Street  
 Brainerd MN 56401



website: [www.AffinityRealEstate.com](http://www.AffinityRealEstate.com) | email: [info@affinityrealestate.com](mailto:info@affinityrealestate.com) | office: 218-237-3333 | fax:218-237-3377



**\$1,295,000**  
MLS 7051627 Commercial  
209 Washington Street  
Brainerd MN 56401



website: [www.AffinityRealEstate.com](http://www.AffinityRealEstate.com) | email: [info@affinityrealestate.com](mailto:info@affinityrealestate.com) | office: 218-237-3333 | fax:218-237-3377



**\$1,295,000**  
MLS 7051627 Commercial  
209 Washington Street  
Brainerd MN 56401