



MLS 7051713 Land

\$150,000

5.2 Acres
Raw Land

TBD 513th Ave E, Tract E
Ottertail MN 56571

Status: Active

Description:

Here is your chance to build your dream home with lake and river frontage on 5.2 acres of land with 640' of lake and river frontage. A mix of tall pines and hardwoods offer year around beauty and privacy. Incredible fishing with early open water and late freeze up with the river frontage. A well placed dock would grant easy fishing from shore for kids. You can canoe or take a small boat on Leaf River downstream for wildlife and birdwatching or out onto East Leaf Lake for fishing adventures... This property is best suited for a house on grade or a shouse style of home. With the large acreage you can also build an additional garage or pole shed for your storage needs.

The adjoining property has a lake home with 6+ acres, and it is also for sale.

Additional Details:

Lot Acres	5.2
Lot Dimensions	irregular
School District	1945
Taxes	(unreported)
Taxes with Assessments	(unreported)
Tax Year	2025

Additional Features:

Driving Directions:

Leaf River Road to 513th Avenue. Property is on southwest corner of the intersection.



Listed By:
Counselor Realty, Inc.

Affinity Real Estate Inc. participates in the Regional Multiple Listing Service of Minnesota, Inc Broker Reciprocity (sm) program, allowing us to display other broker's listings on our website. All properties are subject to prior sale, change or withdrawal.



Call Affinity Real Estate

218-237-3333

info@affinityrealestate.com



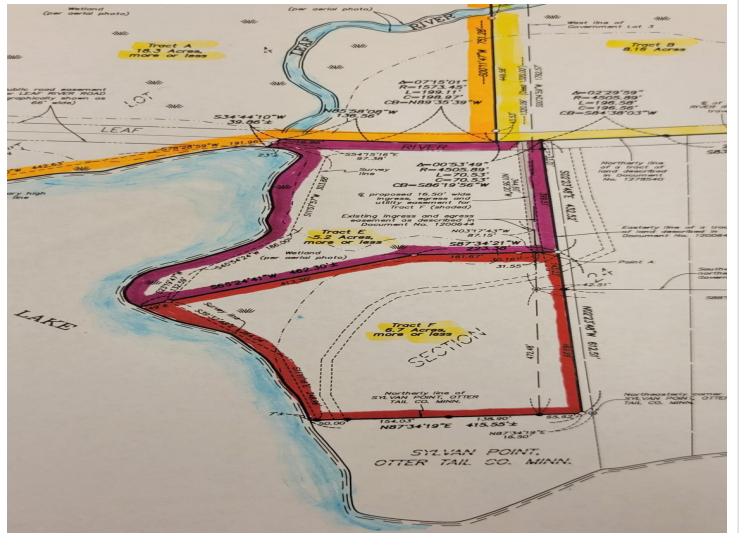
Affinity Real Estate - 600 Park Avenue South - Park Rapids MN 56470



website: www.AffinityRealEstate.com | email: info@affinityrealestate.com | office: 218-237-3333 | fax:218-237-3377



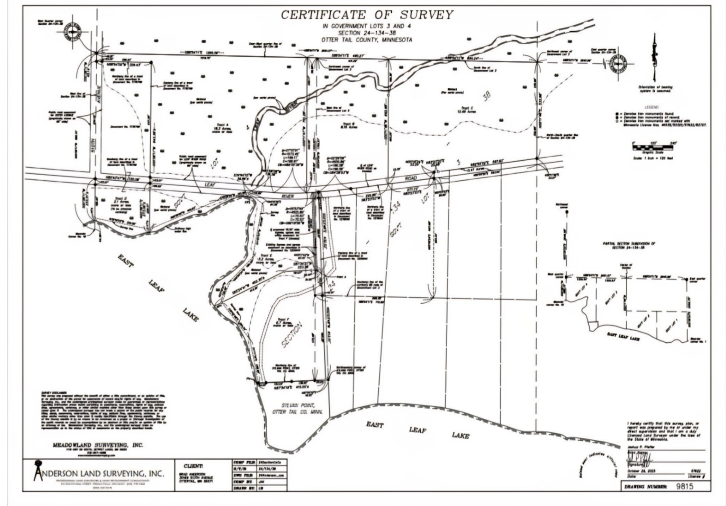
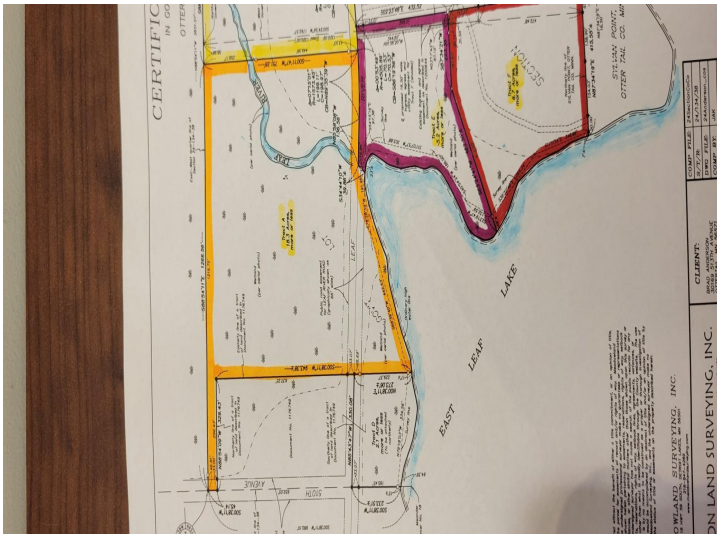
\$150,000
MLS 7051713 Land
TBD 513th Ave E, Tract E
Ottertail MN 56571



website: www.AffinityRealEstate.com | email: info@affinityrealestate.com | office: 218-237-3333 | fax:218-237-3377



\$150,000
MLS 7051713 Land
TBD 513th Ave E, Tract E
Ottertail MN 56571



website: www.AffinityRealEstate.com | email: info@affinityrealestate.com | office: 218-237-3333 | fax:218-237-3377



\$150,000
 MLS 7051713 Land
 TBD 513th Ave E, Tract E
 Ottertail MN 56571