



MLS 7051759 Residential

**\$475,000**

1,400 sq ft  
3 bedrooms  
2 baths

21275 Evening Star Lane  
Emily MN 56662

Status: Coming Soon

**Description:**

Three-bedroom, two-bathroom Outing home with a two-car heated/insulated attached garage. Get on Lake Roosevelt without the lake taxes with your own dedicated boat slip that is included. The home features one level living, granite countertops, and hardy board siding. The crawl space has a concrete floor and is great for storage. 30X40 shed features epoxy floors and an insulated bunk area. Schedule your showing today!

**Additional Details:**

Year Built	2007
Lot Acres	0.76
Lot Dimensions	200x225x85x231
Garage Stalls	4
School District	904
Taxes	\$1,546
Taxes with Assessments	\$1,546
Tax Year	2026

**Additional Features:**

**Basement:** Crawl Space **Fuel:** Array **Garage:** 4 **Heat:** Forced Air **Sewer:** Tank with Drainage Field **Water:** 4-Inch Submersible, Drilled, Well **Air Conditioning:** Central Air

**Driving Directions:**

From MN-6 N: Turn right onto Smokey Hollow Rd, turn right onto Evening Star Ln, home will be on the right.



Listed By:  
eXp Realty

Affinity Real Estate Inc. participates in the Regional Multiple Listing Service of Minnesota, Inc Broker Reciprocity (sm) program, allowing us to display other broker's listings on our website. All properties are subject to prior sale, change or withdrawal.



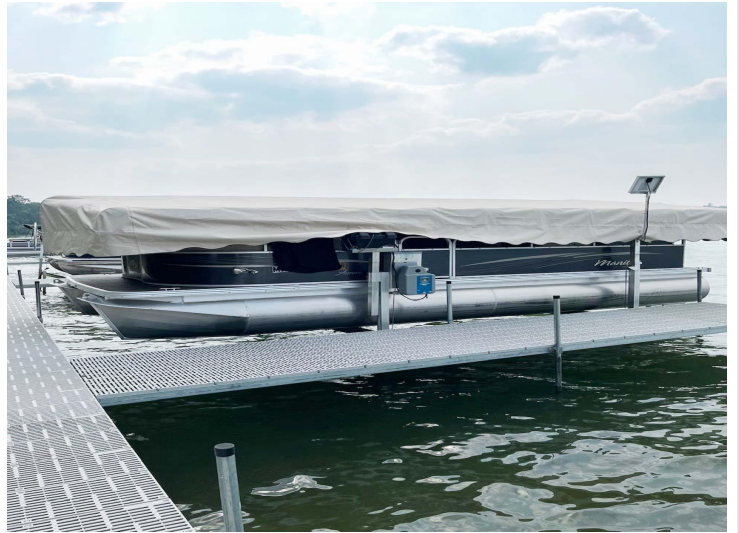
**Call Affinity Real Estate**

**218-237-3333**

**info@affinityrealestate.com**



**Affinity Real Estate - 600 Park Avenue South - Park Rapids MN 56470**



website: [www.AffinityRealEstate.com](http://www.AffinityRealEstate.com) | email: [info@affinityrealestate.com](mailto:info@affinityrealestate.com) | office: 218-237-3333 | fax: 218-237-3377

**Affinity**  
REAL ESTATE INC

**\$475,000**  
MLS 7051759 Residential  
21275 Evening Star Lane  
Emily MN 56662



website: [www.AffinityRealEstate.com](http://www.AffinityRealEstate.com) | email: [info@affinityrealestate.com](mailto:info@affinityrealestate.com) | office: 218-237-3333 | fax:218-237-3377

**Affinity**  
REAL ESTATE INC

**\$475,000**  
MLS 7051759 Residential  
21275 Evening Star Lane  
Emily MN 56662



website: [www.AffinityRealEstate.com](http://www.AffinityRealEstate.com) | email: [info@affinityrealestate.com](mailto:info@affinityrealestate.com) | office: 218-237-3333 | fax:218-237-3377

**Affinity**  
REAL ESTATE INC

**\$475,000**  
MLS 7051759 Residential  
21275 Evening Star Lane  
Emily MN 56662



website: [www.AffinityRealEstate.com](http://www.AffinityRealEstate.com) | email: [info@affinityrealestate.com](mailto:info@affinityrealestate.com) | office: 218-237-3333 | fax:218-237-3377

**Affinity**  
REAL ESTATE INC

**\$475,000**  
MLS 7051759 Residential  
21275 Evening Star Lane  
Emily MN 56662



website: [www.AffinityRealEstate.com](http://www.AffinityRealEstate.com) | email: [info@affinityrealestate.com](mailto:info@affinityrealestate.com) | office: 218-237-3333 | fax: 218-237-3377

**Affinity**  
REAL ESTATE INC

**\$475,000**  
MLS 7051759 Residential  
21275 Evening Star Lane  
Emily MN 56662



website: [www.AffinityRealEstate.com](http://www.AffinityRealEstate.com) | email: [info@affinityrealestate.com](mailto:info@affinityrealestate.com) | office: 218-237-3333 | fax:218-237-3377

**Affinity**  
REAL ESTATE INC

**\$475,000**  
MLS 7051759 Residential  
21275 Evening Star Lane  
Emily MN 56662



website: [www.AffinityRealEstate.com](http://www.AffinityRealEstate.com) | email: [info@affinityrealestate.com](mailto:info@affinityrealestate.com) | office: 218-237-3333 | fax:218-237-3377

**Affinity**  
REAL ESTATE INC

**\$475,000**  
MLS 7051759 Residential  
21275 Evening Star Lane  
Emily MN 56662