



MLS 7051827 Residential

**\$215,000**

1,836 sq ft  
3 bedrooms  
2 baths

3404 Doral Drive  
Bemidji MN 56601

Status: Active

**Description:**

Attractive and larger 3BR + office, 2BA manufactured home in convenient near town location. Vaulted ceiling and abundant natural light. Central Air, new roof, new siding and two new expansive decks. Ensuite features double sinks, his and her closets and has tub and walk in shower. Home has insulated skirting, frost footings/tie-downs and served by natural gas. This home is clean ready to move in.

**Additional Details:**

Year Built	1998
Lot Acres	0.97
Lot Dimensions	145'x295'
School District	1386
Taxes	\$889
Taxes with Assessments	\$1,080
Tax Year	2026

**Additional Features:**

**Basement:** Crawl Space **Fuel:** Array **Heat:** Forced Air **Sewer:** Mound Septic, Private Sewer **Water:** 4-Inch Submersible, Drilled, Private **Air Conditioning:** Central Air

**Driving Directions:**

Mill Street to Doral



Listed By:  
Century 21 Dickinson

Affinity Real Estate Inc. participates in the Regional Multiple Listing Service of Minnesota, Inc Broker Reciprocity (sm) program, allowing us to display other broker's listings on our website. All properties are subject to prior sale, change or withdrawal.



Call Affinity Real Estate

**218-237-3333**

[info@affinityrealestate.com](mailto:info@affinityrealestate.com)



Affinity Real Estate - 600 Park Avenue South - Park Rapids MN 56470



website: [www.AffinityRealEstate.com](http://www.AffinityRealEstate.com) | email: [info@affinityrealestate.com](mailto:info@affinityrealestate.com) | office: 218-237-3333 | fax:218-237-3377

**Affinity**  
REAL ESTATE INC

**\$215,000**  
MLS 7051827 Residential  
3404 Doral Drive  
Bemidji MN 56601



website: [www.AffinityRealEstate.com](http://www.AffinityRealEstate.com) | email: [info@affinityrealestate.com](mailto:info@affinityrealestate.com) | office: 218-237-3333 | fax: 218-237-3377

**Affinity**  
REAL ESTATE INC

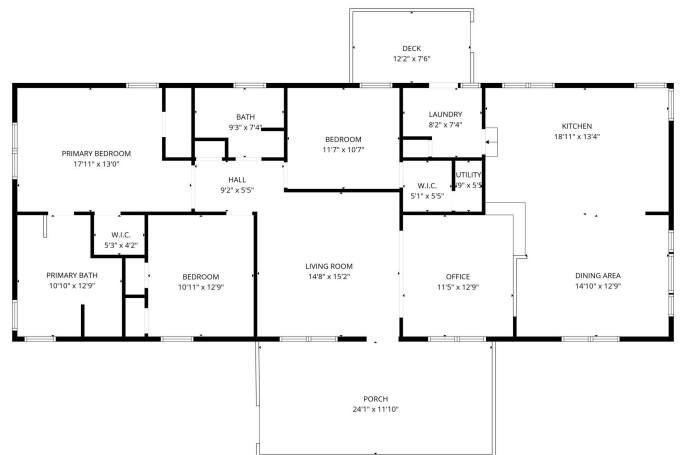
**\$215,000**  
MLS 7051827 Residential  
3404 Doral Drive  
Bemidji MN 56601



website: [www.AffinityRealEstate.com](http://www.AffinityRealEstate.com) | email: [info@affinityrealestate.com](mailto:info@affinityrealestate.com) | office: 218-237-3333 | fax: 218-237-3377

**Affinity**  
REAL ESTATE INC

**\$215,000**  
MLS 7051827 Residential  
3404 Doral Drive  
Bemidji MN 56601



FLOOR PLAN CREATED BY CUBICARA APP. MEASUREMENTS DEEMED HIGHLY RELIABLE BUT NOT GUARANTEED.

website: [www.AffinityRealEstate.com](http://www.AffinityRealEstate.com) | email: [info@affinityrealestate.com](mailto:info@affinityrealestate.com) | office: 218-237-3333 | fax: 218-237-3377



**\$215,000**  
 MLS 7051827 Residential  
 3404 Doral Drive  
 Bemidji MN 56601