



MLS 7052150 Residential

\$439,000

1,232 sq ft
3 bedrooms
1 baths

46459 County Road 173
Deer River MN 56636

Status: Coming Soon

Description:

Charming 3-bedroom, 1 full bath home on Bowstring Lake! Enjoy the ease of one-level living with in-floor heat throughout. The open-concept layout features custom-made kitchen cabinetry, a center island, and a spacious great room—perfect for gathering and entertaining. Custom lighting adds warmth and character to the kitchen, great room, and bathroom. Cozy up by the gas fireplace or unwind on the back patio while taking in the peaceful lake views. This property offers 237 feet of lakeshore frontage with a hard sand bottom and a level approach to the water—ideal for enjoying lake life to the fullest. It also features a private boat ramp for easy lake access. A large metal building includes an insulated and heated bunkhouse, providing plenty of space for guests or extra storage. Additional highlights include a fish house with running water, a maple syrup sugar shack, an artesian well, and close proximity to snowmobile trails for year-round recreation.

Additional Details:

Year Built	2006
Lot Acres	1.08
Lot Dimensions	IRR
Garage Stalls	3
School District	1407
Taxes	\$3,113
Taxes with Assessments	\$3,194
Tax Year	2026

Additional Features:

Basement: None **Fuel:** Array **Garage:** 3 **Heat:** Dual Fuel/Off Peak, Fireplace(s) **Sewer:** Mound Septic **Water:** Drilled, Well **Air Conditioning:** None

Driving Directions:

Take Hwy 6 to left on CR 35, to left on CR 175, to left on CR 173



Listed By:
EDGE OF THE WILDERNESS REALTY

Affinity Real Estate Inc. participates in the Regional Multiple Listing Service of Minnesota, Inc Broker Reciprocity (sm) program, allowing us to display other broker's listings on our website. All properties are subject to prior sale, change or withdrawal.



Call Affinity Real Estate

218-237-3333

info@affinityrealestate.com



Affinity Real Estate - 600 Park Avenue South - Park Rapids MN 56470



website: www.AffinityRealEstate.com | email: info@affinityrealestate.com | office: 218-237-3333 | fax:218-237-3377



\$439,000
MLS 7052150 Residential
46459 County Road 173
Deer River MN 56636



website: www.AffinityRealEstate.com | email: info@affinityrealestate.com | office: 218-237-3333 | fax: 218-237-3377

Affinity
REAL ESTATE INC

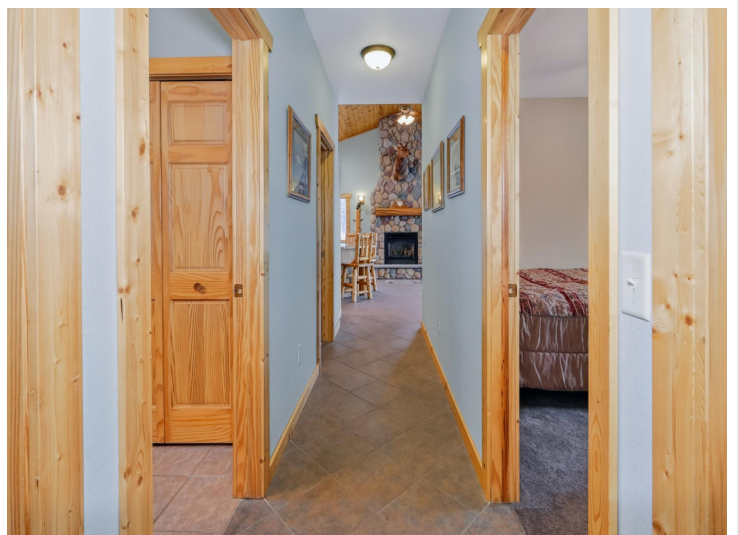
\$439,000
MLS 7052150 Residential
46459 County Road 173
Deer River MN 56636



website: www.AffinityRealEstate.com | email: info@affinityrealestate.com | office: 218-237-3333 | fax: 218-237-3377

Affinity
REAL ESTATE INC

\$439,000
MLS 7052150 Residential
46459 County Road 173
Deer River MN 56636



website: www.AffinityRealEstate.com | email: info@affinityrealestate.com | office: 218-237-3333 | fax:218-237-3377

Affinity
REAL ESTATE INC

\$439,000
MLS 7052150 Residential
46459 County Road 173
Deer River MN 56636



website: www.AffinityRealEstate.com | email: info@affinityrealestate.com | office: 218-237-3333 | fax:218-237-3377



\$439,000
MLS 7052150 Residential
46459 County Road 173
Deer River MN 56636



website: www.AffinityRealEstate.com | email: info@affinityrealestate.com | office: 218-237-3333 | fax:218-237-3377

Affinity
REAL ESTATE INC

\$439,000
MLS 7052150 Residential
46459 County Road 173
Deer River MN 56636



website: www.AffinityRealEstate.com | email: info@affinityrealestate.com | office: 218-237-3333 | fax:218-237-3377



\$439,000
MLS 7052150 Residential
46459 County Road 173
Deer River MN 56636



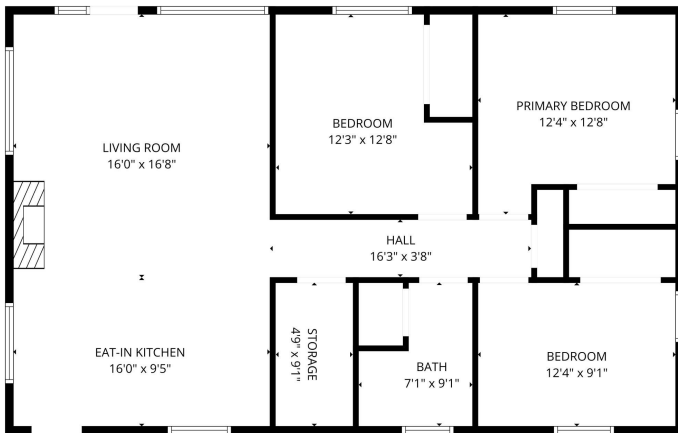
website: www.AffinityRealEstate.com | email: info@affinityrealestate.com | office: 218-237-3333 | fax:218-237-3377

Affinity
REAL ESTATE INC

\$439,000
MLS 7052150 Residential
46459 County Road 173
Deer River MN 56636



Bowstring Lake



FLOOR PLAN CREATED BY CUBICASA APP. MEASUREMENTS DEEMED HIGHLY RELIABLE BUT NOT GUARANTEED.



FLOOR PLAN CREATED BY CUBICASA APP. MEASUREMENTS DEEMED HIGHLY RELIABLE BUT NOT GUARANTEED.

website: www.AffinityRealEstate.com | email: info@affinityrealestate.com | office: 218-237-3333 | fax: 218-237-3377



\$439,000
 MLS 7052150 Residential
 46459 County Road 173
 Deer River MN 56636