



MLS 7052267 Residential

\$699,000

1,680 sq ft
2 bedrooms
3 baths

6432 Botzet Road
Nelson MN 56355

Status: Active

Description:

Discover this charming 2 bedroom 3 bath rambler home nestled in a serene and quiet 5.46 acre setting. An additional 34.47 acre parcel, adjacent to the home can be available for sale. This home offers 2 main floor bedrooms, convenient main-level laundry and 3 main floor bathrooms. The primary bedroom has a walk-in closet, bathroom with shower, dual sinks, granite countertop, and sliding glass door to the outdoors. Kitchen has generous cupboard space, granite countertops with large breakfast bar/sitting area. The unfinished basement offers plenty of room to grow and make your own. Already has egress window for a 3rd bedroom and rough-in bathroom hook ups and tub is set and ready to go. You'll love the heated, 42 x 36 insulated 3- car attached garage with stair access to the basement. The 80 x 40 shed is insulated, heated, concrete floors with drains, interior has tin finished walls, overhead garage doors 14' high and 16' wide. The barn has concrete floors, tin sided, and 84 x 32 ft of additional storage or use the barn for your animals. Outdoor enthusiasts will love this area, perfect for year-round recreation.

Additional Details:


Year Built	2011
Lot Acres	5.46
Lot Dimensions	1 x 1 x 1 x 1
Garage Stalls	3
School District	1015
Taxes	\$3,990
Taxes with Assessments	\$3,990
Tax Year	2026

Additional Features:

Basement: Egress Window(s), Full, Sump Basket, Unfinished **Fuel:** Array **Garage:** 3 **Heat:** Forced Air **Sewer:** Mound Septic, Septic System Compliant - Yes **Water:** Well **Air Conditioning:** Central Air

Driving Directions:

From City of Carlos go East on Fairfield Creek Rd NE on curve stay straight on Fairfield Creek Rd NE to Botzet Rd NE follow to sign on right 6432

 Listed By:
ERA Viking Realty

Affinity Real Estate Inc. participates in the Regional Multiple Listing Service of Minnesota, Inc Broker Reciprocity (sm) program, allowing us to display other broker's listings on our website. All properties are subject to prior sale, change or withdrawal.



Call Affinity Real Estate
218-237-3333
info@affinityrealestate.com



Affinity Real Estate - 600 Park Avenue South - Park Rapids MN 56470



website: www.AffinityRealEstate.com | email: info@affinityrealestate.com | office: 218-237-3333 | fax:218-237-3377

Affinity
REAL ESTATE INC

\$699,000
MLS 7052267 Residential
6432 Botzet Road
Nelson MN 56355



website: www.AffinityRealEstate.com | email: info@affinityrealestate.com | office: 218-237-3333 | fax:218-237-3377



\$699,000
MLS 7052267 Residential
6432 Botzet Road
Nelson MN 56355



website: www.AffinityRealEstate.com | email: info@affinityrealestate.com | office: 218-237-3333 | fax:218-237-3377

Affinity
REAL ESTATE INC

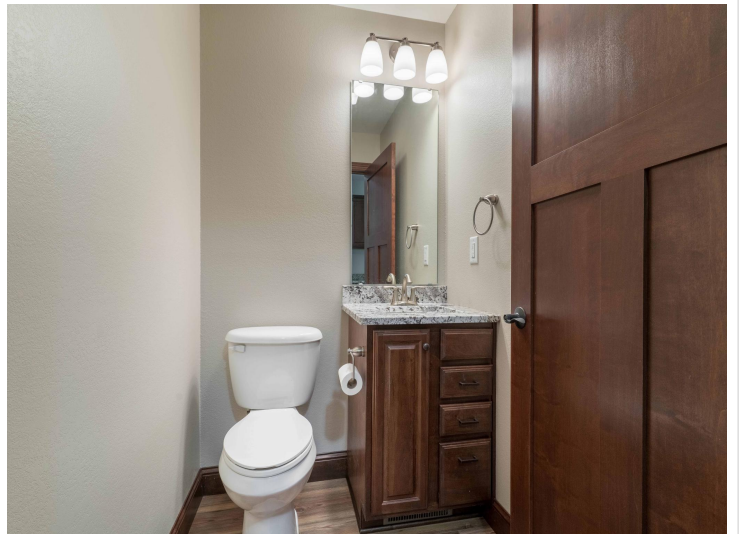
\$699,000
MLS 7052267 Residential
6432 Botzet Road
Nelson MN 56355



website: www.AffinityRealEstate.com | email: info@affinityrealestate.com | office: 218-237-3333 | fax:218-237-3377



\$699,000
MLS 7052267 Residential
6432 Botzet Road
Nelson MN 56355



website: www.AffinityRealEstate.com | email: info@affinityrealestate.com | office: 218-237-3333 | fax:218-237-3377



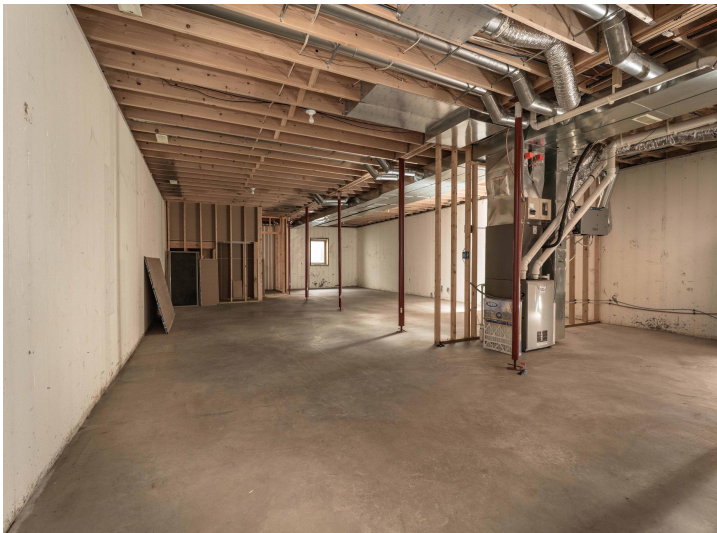
\$699,000
MLS 7052267 Residential
6432 Botzet Road
Nelson MN 56355



website: www.AffinityRealEstate.com | email: info@affinityrealestate.com | office: 218-237-3333 | fax: 218-237-3377

Affinity
REAL ESTATE INC

\$699,000
MLS 7052267 Residential
6432 Botzet Road
Nelson MN 56355



website: www.AffinityRealEstate.com | email: info@affinityrealestate.com | office: 218-237-3333 | fax:218-237-3377



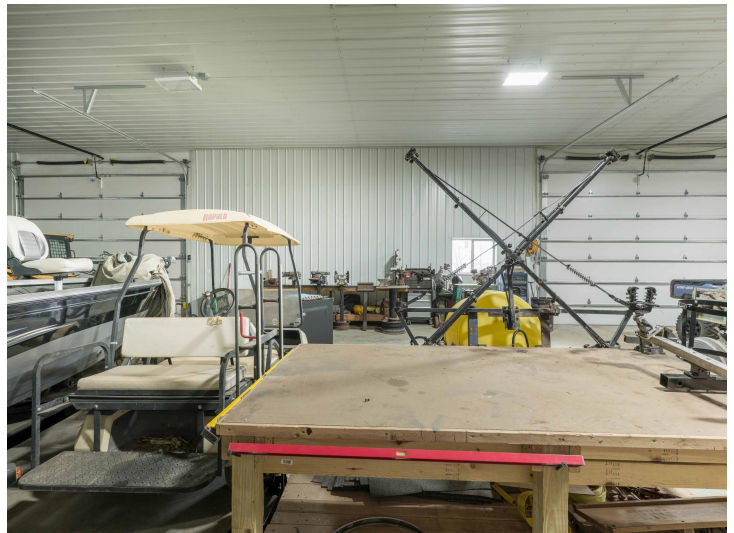
\$699,000
MLS 7052267 Residential
6432 Botzet Road
Nelson MN 56355



website: www.AffinityRealEstate.com | email: info@affinityrealestate.com | office: 218-237-3333 | fax:218-237-3377



\$699,000
MLS 7052267 Residential
6432 Botzet Road
Nelson MN 56355



website: www.AffinityRealEstate.com | email: info@affinityrealestate.com | office: 218-237-3333 | fax:218-237-3377



\$699,000
MLS 7052267 Residential
6432 Botzet Road
Nelson MN 56355



website: www.AffinityRealEstate.com | email: info@affinityrealestate.com | office: 218-237-3333 | fax: 218-237-3377



\$699,000
MLS 7052267 Residential
6432 Botzet Road
Nelson MN 56355



website: www.AffinityRealEstate.com | email: info@affinityrealestate.com | office: 218-237-3333 | fax:218-237-3377

Affinity
REAL ESTATE INC

\$699,000
MLS 7052267 Residential
6432 Botzet Road
Nelson MN 56355



website: www.AffinityRealEstate.com | email: info@affinityrealestate.com | office: 218-237-3333 | fax:218-237-3377

Affinity
REAL ESTATE INC

\$699,000
MLS 7052267 Residential
6432 Botzet Road
Nelson MN 56355