



MLS 7052528 Land

**\$119,900**

14.7 Acres  
Raw Land

Tract D Olander Road  
Crosby MN 56441

Status: Active

**Description:**

Don't miss your incredible opportunity to build your dream home on this 15-acre parcel with utilities to the road. This lot features mature trees, a great location, and beautiful views, a lake right behind perfect for water fowl. Location is pristine near many ATV and snowmobile trails, Adney Lake public access is right down the road. You will also be able to enjoy an abundance of wildlife with thousands of acres of state land great for hunting enthusiasts or just to enjoy nature. Schedule your showing today.

**Additional Details:**

Lot Acres	14.7
Lot Dimensions	316x2000
School District	904
Taxes	\$146
Taxes with Assessments	\$146
Tax Year	2025

**Additional Features:**

**Driving Directions:**

Head north on MN-6 N. Turn left onto Olander Rd. Destination will be on your left.



Listed By:  
eXp Realty

Affinity Real Estate Inc. participates in the Regional Multiple Listing Service of Minnesota, Inc Broker Reciprocity (sm) program, allowing us to display other broker's listings on our website. All properties are subject to prior sale, change or withdrawal.



Call Affinity Real Estate

**218-237-3333**

[info@affinityrealestate.com](mailto:info@affinityrealestate.com)



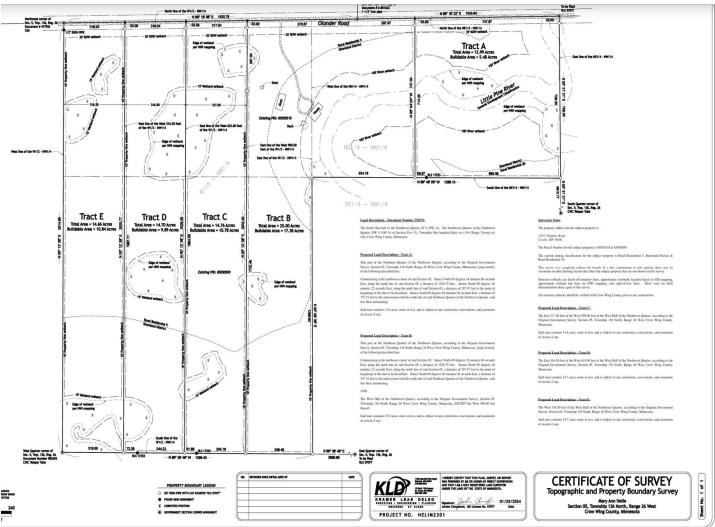
Affinity Real Estate - 600 Park Avenue South - Park Rapids MN 56470



website: [www.AffinityRealEstate.com](http://www.AffinityRealEstate.com) | email: [info@affinityrealestate.com](mailto:info@affinityrealestate.com) | office: 218-237-3333 | fax:218-237-3377



**\$119,900**  
MLS 7052528 Land  
Tract D Olander Road  
Crosby MN 56441



website: [www.AffinityRealEstate.com](http://www.AffinityRealEstate.com) | email: [info@affinityrealestate.com](mailto:info@affinityrealestate.com) | office: 218-237-3333 | fax:218-237-3377



**\$119,900**  
 MLS 7052528 Land  
 Tract D Olander Road  
 Crosby MN 56441