



MLS 7052620 Residential

\$1,100,000

3,308 sq ft
3 bedrooms
3 baths

18575 Power Dam Road
Bemidji MN 56601

Status: Active



Description:

This Big Lake retreat is the complete package when it comes to lake living! Starting with its 2.7 acre lot with 300 ft of hard sand beachfront that sits only 60 ft from the dreamy 3+BR/3BA custom home with attached in-law apartment. Open floor plan with vaulted ceilings, family room with fireplace, large lakeside facing kitchen/dining area, along with a lakeside primary bedroom with views that dreams are made of! The 32x52 outbuilding is the answer for extra guests & hobbies. It features 2 additional guest rooms and a 26x32 heated dream shop with an additional 26x32 storage for all the lake toys. To top off the list this baby comes with solar panels for additional electric savings. As you can tell there are too many extras to mention here you have to make an appointment to see the rest of this beautiful lake property and hopefully you will be lucky enough to call it your home someday soon!

Additional Details:

Year Built	1998
Lot Acres	2.7
Lot Dimensions	310x370
Garage Stalls	3
School District	1386
Taxes	\$5,022
Taxes with Assessments	\$5,022
Tax Year	2026

Additional Features:

Basement: None **Fuel:** Array **Garage:** 3 **Heat:** Dual Fuel/Off Peak, Forced Air, Fireplace(s) **Sewer:** Mound Septic, Private Sewer **Water:** 4-Inch Submersible, Drilled, Private, Well **Air Conditioning:** Central Air

Driving Directions:

East on Power Dam Rd, follow to property on left (no sign will be on the road) Fire #18575.



Listed By:
Century 21 Dickinson

Affinity Real Estate Inc. participates in the Regional Multiple Listing Service of Minnesota, Inc Broker Reciprocity (sm) program, allowing us to display other broker's listings on our website. All properties are subject to prior sale, change or withdrawal.



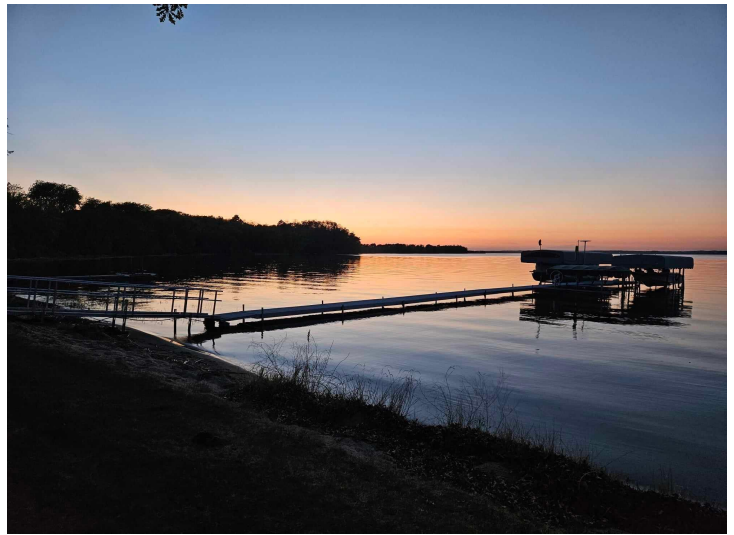
Call Affinity Real Estate

218-237-3333

info@affinityrealestate.com



Affinity Real Estate - 600 Park Avenue South - Park Rapids MN 56470



website: www.AffinityRealEstate.com | email: info@affinityrealestate.com | office: 218-237-3333 | fax: 218-237-3377



\$1,100,000
MLS 7052620 Residential
18575 Power Dam Road
Bemidji MN 56601



website: www.AffinityRealEstate.com | email: info@affinityrealestate.com | office: 218-237-3333 | fax:218-237-3377



\$1,100,000
MLS 7052620 Residential
18575 Power Dam Road
Bemidji MN 56601



website: www.AffinityRealEstate.com | email: info@affinityrealestate.com | office: 218-237-3333 | fax:218-237-3377

Affinity
REAL ESTATE INC

\$1,100,000
MLS 7052620 Residential
18575 Power Dam Road
Bemidji MN 56601



website: www.AffinityRealEstate.com | email: info@affinityrealestate.com | office: 218-237-3333 | fax:218-237-3377

Affinity
REAL ESTATE INC

\$1,100,000
MLS 7052620 Residential
18575 Power Dam Road
Bemidji MN 56601



website: www.AffinityRealEstate.com | email: info@affinityrealestate.com | office: 218-237-3333 | fax:218-237-3377

Affinity
REAL ESTATE INC

\$1,100,000
MLS 7052620 Residential
18575 Power Dam Road
Bemidji MN 56601



website: www.AffinityRealEstate.com | email: info@affinityrealestate.com | office: 218-237-3333 | fax: 218-237-3377



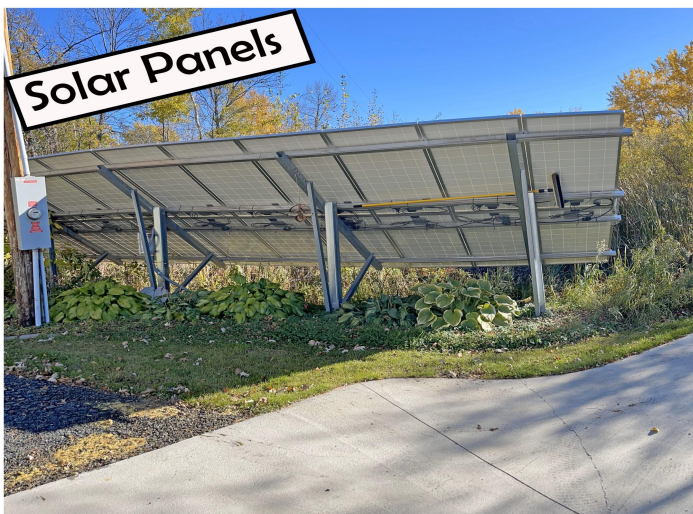
\$1,100,000
MLS 7052620 Residential
18575 Power Dam Road
Bemidji MN 56601



website: www.AffinityRealEstate.com | email: info@affinityrealestate.com | office: 218-237-3333 | fax:218-237-3377



\$1,100,000
MLS 7052620 Residential
18575 Power Dam Road
Bemidji MN 56601



website: www.AffinityRealEstate.com | email: info@affinityrealestate.com | office: 218-237-3333 | fax:218-237-3377



\$1,100,000
MLS 7052620 Residential
18575 Power Dam Road
Bemidji MN 56601



website: www.AffinityRealEstate.com | email: info@affinityrealestate.com | office: 218-237-3333 | fax:218-237-3377



\$1,100,000
MLS 7052620 Residential
18575 Power Dam Road
Bemidji MN 56601