



MLS 7052632 Residential

**\$699,900**

1,836 sq ft  
3 bedrooms  
2 baths

8009 County 78  
Nisswa MN 56468

Status: Coming Soon

**Description:**

Custom built south facing energy efficient, single level 1,836 sq. ft. home is located on 5 acres of land, inground pool, 3BR, 2BA with large master suite/tiled walk-in shower/custom millwork/concrete countertops in kitchen/solid surface floors throughout/wood stove/covered entry/plus 28x10 covered porch wired for a hot tub/washed aggregated patio/ in-ground pool/ tarred driveway/stamped concrete parking area, fully finished and heated 56x40 shop with mancave, lawn irrigation/walking distance to Bar Harbor, Zorbaz and the gull lake boat landing!

**Additional Details:**

Year Built	2008
Lot Acres	5
Lot Dimensions	305x715x305x705
Garage Stalls	10
School District	181
Taxes	\$2,702
Taxes with Assessments	\$2,768
Tax Year	2025

**Additional Features:**

**Basement:** None **Fuel:** Electric, Propane **Garage:** 10 **Heat:** Boiler, Dual Fuel/Off Peak, Forced Air, In-Floor Heating, Wood Stove **Sewer:** Tank with Drainage Field **Water:** Drilled **Air Conditioning:** Central Air

**Driving Directions:**

8009 County 78



Listed By:  
RE/MAX Results - Nisswa

Affinity Real Estate Inc. participates in the Regional Multiple Listing Service of Minnesota, Inc Broker Reciprocity (sm) program, allowing us to display other broker's listings on our website. All properties are subject to prior sale, change or withdrawal.



Call Affinity Real Estate

**218-237-3333**

[info@affinityrealestate.com](mailto:info@affinityrealestate.com)



Affinity Real Estate - 600 Park Avenue South - Park Rapids MN 56470



website: [www.AffinityRealEstate.com](http://www.AffinityRealEstate.com) | email: [info@affinityrealestate.com](mailto:info@affinityrealestate.com) | office: 218-237-3333 | fax:218-237-3377

**Affinity**  
REAL ESTATE INC

**\$699,900**  
MLS 7052632 Residential  
8009 County 78  
Nisswa MN 56468



website: [www.AffinityRealEstate.com](http://www.AffinityRealEstate.com) | email: [info@affinityrealestate.com](mailto:info@affinityrealestate.com) | office: 218-237-3333 | fax:218-237-3377

**Affinity**  
REAL ESTATE INC

**\$699,900**  
MLS 7052632 Residential  
8009 County 78  
Nisswa MN 56468



website: [www.AffinityRealEstate.com](http://www.AffinityRealEstate.com) | email: [info@affinityrealestate.com](mailto:info@affinityrealestate.com) | office: 218-237-3333 | fax: 218-237-3377

**Affinity**  
REAL ESTATE INC

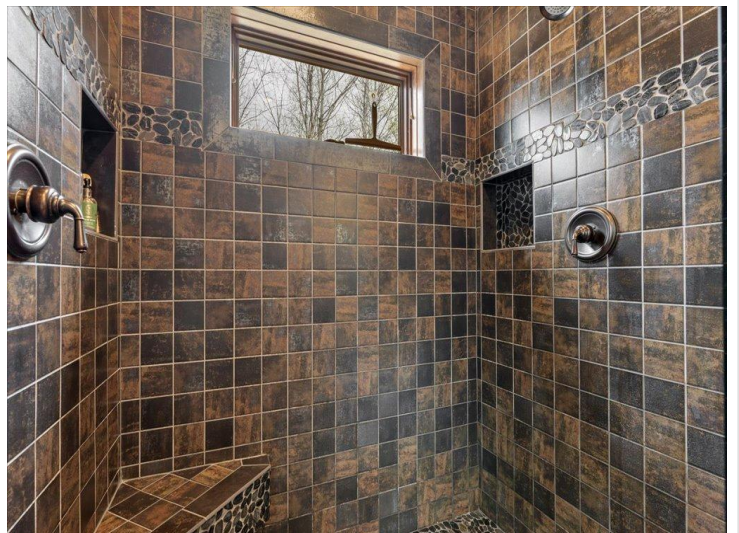
**\$699,900**  
MLS 7052632 Residential  
8009 County 78  
Nisswa MN 56468



website: [www.AffinityRealEstate.com](http://www.AffinityRealEstate.com) | email: [info@affinityrealestate.com](mailto:info@affinityrealestate.com) | office: 218-237-3333 | fax:218-237-3377

**Affinity**  
REAL ESTATE INC

**\$699,900**  
MLS 7052632 Residential  
8009 County 78  
Nisswa MN 56468



website: [www.AffinityRealEstate.com](http://www.AffinityRealEstate.com) | email: [info@affinityrealestate.com](mailto:info@affinityrealestate.com) | office: 218-237-3333 | fax: 218-237-3377

**Affinity**  
REAL ESTATE INC

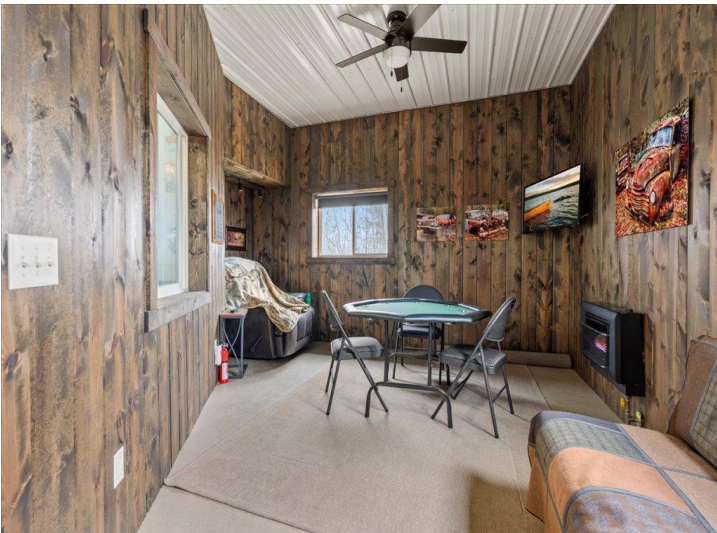
**\$699,900**  
MLS 7052632 Residential  
8009 County 78  
Nisswa MN 56468



website: [www.AffinityRealEstate.com](http://www.AffinityRealEstate.com) | email: [info@affinityrealestate.com](mailto:info@affinityrealestate.com) | office: 218-237-3333 | fax:218-237-3377



**\$699,900**  
MLS 7052632 Residential  
8009 County 78  
Nisswa MN 56468



website: [www.AffinityRealEstate.com](http://www.AffinityRealEstate.com) | email: [info@affinityrealestate.com](mailto:info@affinityrealestate.com) | office: 218-237-3333 | fax:218-237-3377



**\$699,900**  
MLS 7052632 Residential  
8009 County 78  
Nisswa MN 56468



website: [www.AffinityRealEstate.com](http://www.AffinityRealEstate.com) | email: [info@affinityrealestate.com](mailto:info@affinityrealestate.com) | office: 218-237-3333 | fax:218-237-3377

**Affinity**  
REAL ESTATE INC

**\$699,900**  
MLS 7052632 Residential  
8009 County 78  
Nisswa MN 56468