



MLS 7052690 Residential

\$495,000

640 sq ft
3 bedrooms
2 baths

27301 315th Street
Erhard MN 56534

Status: Active



Description:

12 Acres w/ Shouse: 1628sq.ft.home w/ 3000sq.ft. garage/shop, 3-Bedrooms, 2-Bathrooms, Main Floor Laundry, Open Concept with Updated Kitchen, Dining room, Bedroom, Main floor Bathroom/Laundry Combo. Living room w/ Gas Stove, Large Patios, 2nd Floor w/ Family room, Huge Master Bedroom w/ master walk-in closet, and master bathroom, another bedroom, 3000sq. ft. of garage/shop space, In-Floor heat with exterior wood burner & wood shed, stables barns for cattle and horses, Unnamed Lake w/ great fishing, up to 20ft. deep, Beautiful Sunsets, Rolling Hills, and so much more.

Additional Details:

Year Built	2005
Lot Acres	12.23
Lot Dimensions	1x1
Garage Stalls	4
School District	1958
Taxes	\$2,966
Taxes with Assessments	\$2,966
Tax Year	2025

Additional Features:

Basement: None **Fuel:** Array **Garage:** 4 **Heat:** In-Floor Heating **Sewer:** Tank with Drainage Field **Water:** Well **Air Conditioning:** Ductless Mini-Split

Driving Directions:

East of Erhard 12mi.



Listed By:
RE/MAX Legacy Realty

Affinity Real Estate Inc. participates in the Regional Multiple Listing Service of Minnesota, Inc Broker Reciprocity (sm) program, allowing us to display other broker's listings on our website. All properties are subject to prior sale, change or withdrawal.



Call Affinity Real Estate

218-237-3333

info@affinityrealestate.com



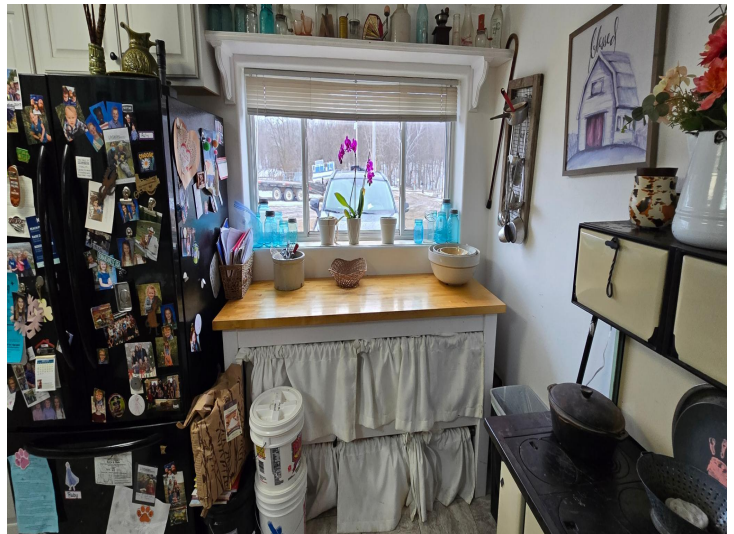
Affinity Real Estate - 600 Park Avenue South - Park Rapids MN 56470



website: www.AffinityRealEstate.com | email: info@affinityrealestate.com | office: 218-237-3333 | fax: 218-237-3377

Affinity
REAL ESTATE INC

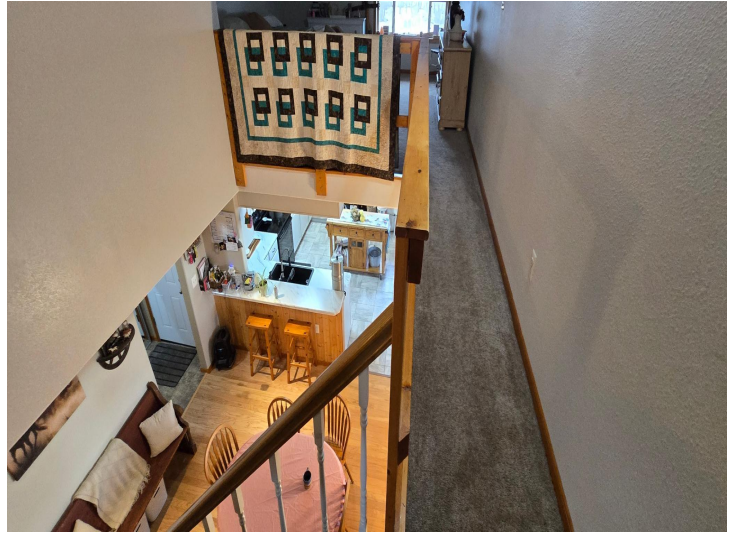
\$495,000
MLS 7052690 Residential
27301 315th Street
Erhard MN 56534



website: www.AffinityRealEstate.com | email: info@affinityrealestate.com | office: 218-237-3333 | fax: 218-237-3377

Affinity
REAL ESTATE INC

\$495,000
MLS 7052690 Residential
27301 315th Street
Erhard MN 56534



website: www.AffinityRealEstate.com | email: info@affinityrealestate.com | office: 218-237-3333 | fax:218-237-3377



\$495,000
MLS 7052690 Residential
27301 315th Street
Erhard MN 56534



website: www.AffinityRealEstate.com | email: info@affinityrealestate.com | office: 218-237-3333 | fax: 218-237-3377

Affinity
REAL ESTATE INC

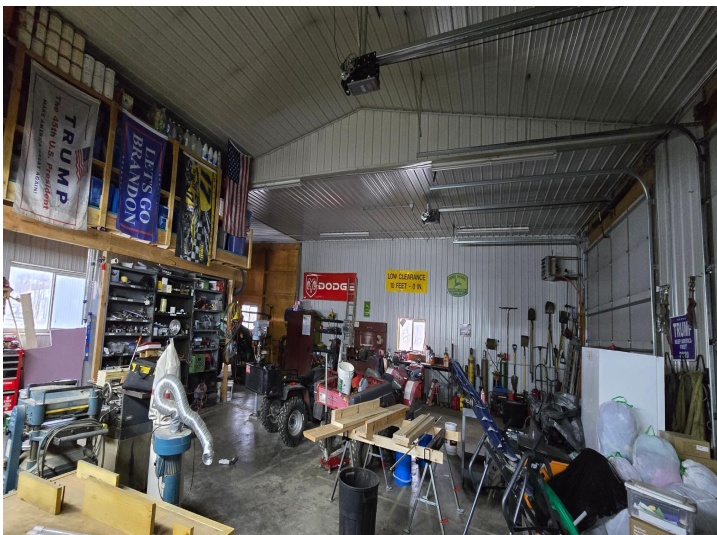
\$495,000
MLS 7052690 Residential
27301 315th Street
Erhard MN 56534



website: www.AffinityRealEstate.com | email: info@affinityrealestate.com | office: 218-237-3333 | fax:218-237-3377

Affinity
REAL ESTATE INC

\$495,000
MLS 7052690 Residential
27301 315th Street
Erhard MN 56534



website: www.AffinityRealEstate.com | email: info@affinityrealestate.com | office: 218-237-3333 | fax:218-237-3377



\$495,000
MLS 7052690 Residential
27301 315th Street
Erhard MN 56534



website: www.AffinityRealEstate.com | email: info@affinityrealestate.com | office: 218-237-3333 | fax:218-237-3377



\$495,000
MLS 7052690 Residential
27301 315th Street
Erhard MN 56534



website: www.AffinityRealEstate.com | email: info@affinityrealestate.com | office: 218-237-3333 | fax:218-237-3377



\$495,000
MLS 7052690 Residential
27301 315th Street
Erhard MN 56534