



MLS 7052710 Residential

\$1,199,000

4,020 sq ft
5 bedrooms
4 baths

12913 Krohnfeldt Court
Alexandria MN 56308

Status: Active

Description:

Experience lake living at its best on highly sought-after Lake Miltona. Set on 1.2 acres with a level lot, this property offers the perfect blend of space, comfort, and shoreline enjoyment, featuring a beautiful sandy-bottom lakefront right off the dock and stunning, wide-open views.

The spacious home includes five bedrooms and four bathrooms, with four bedrooms conveniently located on the upper level, including a second private primary suite, ideal for guests or even multi-generational living. Thoughtfully designed living spaces flow seamlessly into the heart of the home, where the kitchen stands out with a large center island, abundant cabinetry, and a walk-in pantry, perfectly suited for both everyday living and entertaining. Expansive living areas create a warm and welcoming setting, while the main floor laundry and well-appointed primary suite add to the home's overall comfort and functionality. Brand new luxury vinyl plank flooring brings a fresh, updated feel throughout the main level with cozy in-floor heat.


Outside, enjoy a generous lakeside patio ideal for summer evenings, along with a large lawn space, perfect for yard games, entertaining, or simply relaxing by the water, enhanced by a newer irrigation system for easy maintenance. The property also features a dock along the creek on the east side, offering additional water access and a unique, calm setting.

Storage and functionality are unmatched with both an attached garage and a three-stall detached garage complete with a recreational space above, perfect for guests, a hangout area, or added flexibility. There is plenty of room for all your lake toys, boats, and more!

Move in just in time to enjoy everything summer on Lake Miltona has to offer!

Additional Details:

Year Built	2012
Lot Acres	1.2
Lot Dimensions	236 306 176 264
Garage Stalls	4
School District	1015
Taxes	\$11,000
Taxes with Assessments	\$11,000
Tax Year	2025

 Listed By:
Edina Realty, Inc.

Fuel: Array Heat: Forced Air In-Floor Heating

Driving Directions:
From Alexandria head north on Conway Rd 34, turn right turn onto Krohnfeldt Dr. NW, then right again onto Krohnfeldt Ct NW. 12913 is located at the end of the road.



Call Affinity Real Estate
218-237-3333
info@affinityrealestate.com



Affinity Real Estate - 600 Park Avenue South - Park Rapids MN 56470



website: www.AffinityRealEstate.com | email: info@affinityrealestate.com | office: 218-237-3333 | fax:218-237-3377

Affinity
REAL ESTATE INC

\$1,199,000
MLS 7052710 Residential
12913 Krohnfeldt Court
Alexandria MN 56308



website: www.AffinityRealEstate.com | email: info@affinityrealestate.com | office: 218-237-3333 | fax: 218-237-3377

Affinity
REAL ESTATE INC

\$1,199,000
MLS 7052710 Residential
12913 Krohnfeldt Court
Alexandria MN 56308



website: www.AffinityRealEstate.com | email: info@affinityrealestate.com | office: 218-237-3333 | fax: 218-237-3377

Affinity
REAL ESTATE INC

\$1,199,000
MLS 7052710 Residential
12913 Krohnfeldt Court
Alexandria MN 56308



website: www.AffinityRealEstate.com | email: info@affinityrealestate.com | office: 218-237-3333 | fax:218-237-3377



\$1,199,000
MLS 7052710 Residential
12913 Krohnfeldt Court
Alexandria MN 56308



website: www.AffinityRealEstate.com | email: info@affinityrealestate.com | office: 218-237-3333 | fax:218-237-3377

Affinity
REAL ESTATE INC

\$1,199,000
MLS 7052710 Residential
12913 Krohnfeldt Court
Alexandria MN 56308



website: www.AffinityRealEstate.com | email: info@affinityrealestate.com | office: 218-237-3333 | fax:218-237-3377

Affinity
REAL ESTATE INC

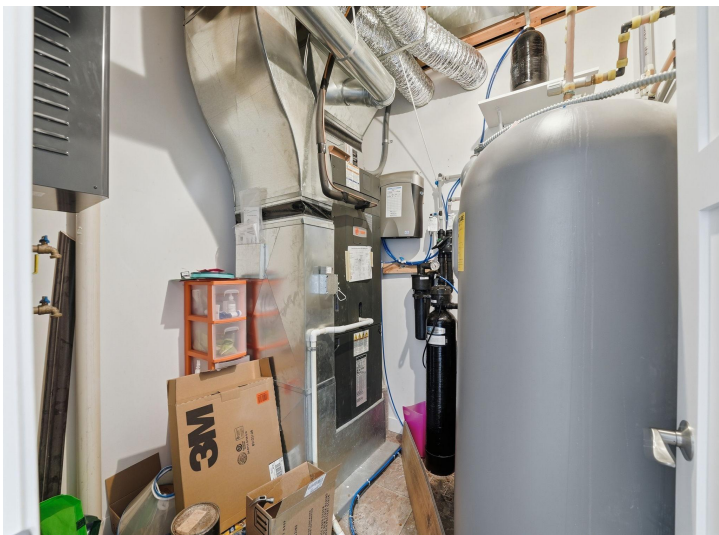
\$1,199,000
MLS 7052710 Residential
12913 Krohnfeldt Court
Alexandria MN 56308



website: www.AffinityRealEstate.com | email: info@affinityrealestate.com | office: 218-237-3333 | fax:218-237-3377

Affinity
REAL ESTATE INC

\$1,199,000
MLS 7052710 Residential
12913 Krohnfeldt Court
Alexandria MN 56308



website: www.AffinityRealEstate.com | email: info@affinityrealestate.com | office: 218-237-3333 | fax: 218-237-3377

Affinity
REAL ESTATE INC

\$1,199,000
MLS 7052710 Residential
12913 Krohnfeldt Court
Alexandria MN 56308



website: www.AffinityRealEstate.com | email: info@affinityrealestate.com | office: 218-237-3333 | fax:218-237-3377

Affinity
REAL ESTATE INC

\$1,199,000
MLS 7052710 Residential
12913 Krohnfeldt Court
Alexandria MN 56308



website: www.AffinityRealEstate.com | email: info@affinityrealestate.com | office: 218-237-3333 | fax:218-237-3377



\$1,199,000
MLS 7052710 Residential
12913 Krohnfeldt Court
Alexandria MN 56308



website: www.AffinityRealEstate.com | email: info@affinityrealestate.com | office: 218-237-3333 | fax:218-237-3377



\$1,199,000
MLS 7052710 Residential
12913 Krohnfeldt Court
Alexandria MN 56308



website: www.AffinityRealEstate.com | email: info@affinityrealestate.com | office: 218-237-3333 | fax:218-237-3377



\$1,199,000
MLS 7052710 Residential
12913 Krohnfeldt Court
Alexandria MN 56308



website: www.AffinityRealEstate.com | email: info@affinityrealestate.com | office: 218-237-3333 | fax:218-237-3377

Affinity
REAL ESTATE INC

\$1,199,000
MLS 7052710 Residential
12913 Krohnfeldt Court
Alexandria MN 56308



website: www.AffinityRealEstate.com | email: info@affinityrealestate.com | office: 218-237-3333 | fax:218-237-3377



\$1,199,000
MLS 7052710 Residential
12913 Krohnfeldt Court
Alexandria MN 56308