



MLS 7052721 Land

\$60,000

1.9 Acres
Raw Land

Lot 3 Saylers Beach Road
Lake Park MN 56554

Status: Active

Description:

Seize the chance to turn your dreams into reality by building your ideal home in this prime location nestled between Fargo/Moorhead and the Detroit Lakes area. Become part of this neighborhood and embrace the opportunities presented by this spacious vacant lot within a new development. Whether you crave a serene retreat, seek a haven in nature, are an outdoor enthusiast, or simply desire a place to call home, this expansive parcel provides the perfect starting point for your aspirations. Step out your front door to enjoy a hike in the woods, beautiful lakes country activities and entertainment, or hop on your favorite nearby lake for the day.

Additional Details:

Lot Acres	1.9
Lot Dimensions	142 x 256 x 322 x 220
School District	1299
Taxes	\$104
Taxes with Assessments	\$104
Tax Year	2026

Additional Features:

Driving Directions:

From Lake Park, turn west onto 2nd St, turn east onto US-10 E, turn east onto 247 St, turn west onto 175 St, Saylers Beach Rd is on the left.



Listed By:
Keller Williams Realty Profess

Affinity Real Estate Inc. participates in the Regional Multiple Listing Service of Minnesota, Inc Broker Reciprocity (sm) program, allowing us to display other broker's listings on our website. All properties are subject to prior sale, change or withdrawal.



Call Affinity Real Estate

218-237-3333

info@affinityrealestate.com



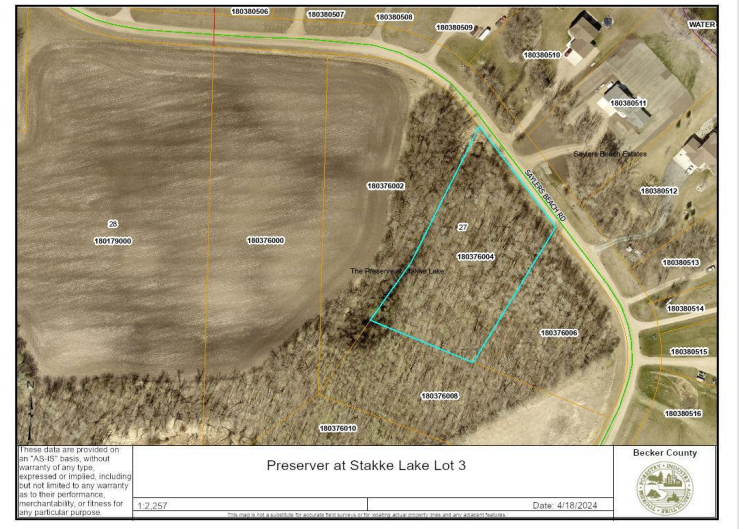
Affinity Real Estate - 600 Park Avenue South - Park Rapids MN 56470



website: www.AffinityRealEstate.com | email: info@affinityrealestate.com | office: 218-237-3333 | fax:218-237-3377



\$60,000
MLS 7052721 Land
Lot 3 Sayers Beach Road
Lake Park MN 56554



website: www.AffinityRealEstate.com | email: info@affinityrealestate.com | office: 218-237-3333 | fax: 218-237-3377



\$60,000
 MLS 7052721 Land
 Lot 3 Sayers Beach Road
 Lake Park MN 56554