



MLS 7052750 Residential

\$549,900

864 sq ft
1 bedrooms
2 baths

20503 Jewel Drive
Park Rapids MN 56470

Status: Coming Soon

Description:

Discover your ideal getaway with this inviting 1-bedroom, 2-bathroom home, featuring an impressive 398 feet of pristine frontage on the stunning Big Mantrap Lake, renowned as one of the top musky fishing destinations in the Northwoods. With its contemporary design, sleek stainless steel appliances, and panoramic views, this home offers a serene and relaxing atmosphere that you'll love coming back to. But that's not all! This property also includes a brand-new 40 x 60 ft shop with 16 ft sidewalls, perfect for storing your boat or personal RV. The location is unbeatable—just minutes away from the Paul Bunyan State Forest, ATV trails, snowmobile trails, and the Heartland Trail. Whether your passion is hunting, fishing, snowmobiling, or hiking, this exceptional property provides everything you need for an exciting outdoor lifestyle. Don't miss out on this incredible opportunity!

Additional Details:

Year Built	1987
Lot Acres	5
Lot Dimensions	398x629x725x533
Garage Stalls	4
School District	1384
Taxes	\$3,225
Taxes with Assessments	\$3,470
Tax Year	2026

Additional Features:

Fuel: Array **Heat:** Baseboard, Ductless Mini-Split

Driving Directions:

From Hwys 71/34 in Park Rapids, go E on 34 to a left on County Road 4, follow to right on County Road 24. Left on Jewel Drive, property is on the left and right hand side of the road. Fire #205803



Listed By:
Wolff & Simon Real Estate

Affinity Real Estate Inc. participates in the Regional Multiple Listing Service of Minnesota, Inc Broker Reciprocity (sm) program, allowing us to display other broker's listings on our website. All properties are subject to prior sale, change or withdrawal.



Call Affinity Real Estate

218-237-3333

info@affinityrealestate.com



Affinity Real Estate - 600 Park Avenue South - Park Rapids MN 56470



website: www.AffinityRealEstate.com | email: info@affinityrealestate.com | office: 218-237-3333 | fax: 218-237-3377

Affinity
REAL ESTATE INC

\$549,900
MLS 7052750 Residential
20503 Jewel Drive
Park Rapids MN 56470



website: www.AffinityRealEstate.com | email: info@affinityrealestate.com | office: 218-237-3333 | fax: 218-237-3377

Affinity
REAL ESTATE INC

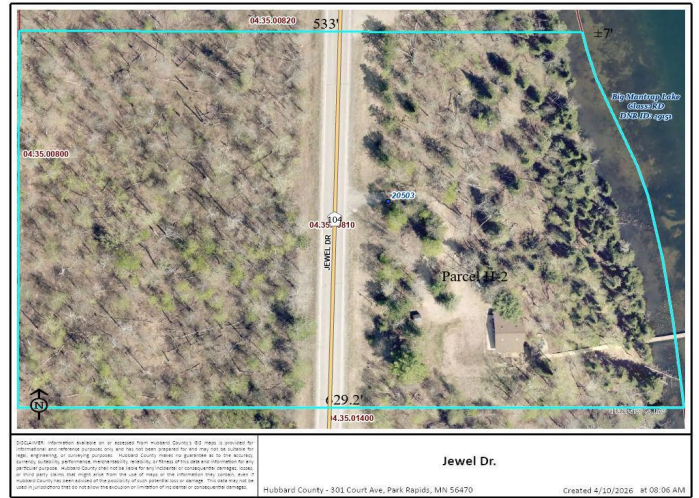
\$549,900
MLS 7052750 Residential
20503 Jewel Drive
Park Rapids MN 56470



website: www.AffinityRealEstate.com | email: info@affinityrealestate.com | office: 218-237-3333 | fax:218-237-3377



\$549,900
MLS 7052750 Residential
20503 Jewel Drive
Park Rapids MN 56470



website: www.AffinityRealEstate.com | email: info@affinityrealestate.com | office: 218-237-3333 | fax: 218-237-3377



\$549,900
 MLS 7052750 Residential
 20503 Jewel Drive
 Park Rapids MN 56470