



MLS 7052782 Land

\$65,000

6.76 Acres
Raw Land

4853 Iroquois Loop
Motley MN 56466

Status: Active

Description:

This property is located in the Wilderness Park Association. If you are looking for a up north property to enjoy snowmobile, a ATV, hunting or fishing this could be just what your looking for. You can park an RV or build a cabin/house on this lot. Come enjoy the association club house, pool or the lake.

Additional Details:

Lot Acres	6.76
Lot Dimensions	Irregular
School District	1062
Taxes	\$322
Taxes with Assessments	\$322
Tax Year	2025

Additional Features:

Driving Directions:

From Motley, north on hwy 64 for 13.5 miles to right onto 76th Street SW, take King Richard Ave SW, Robin Hood Lane SW and Eastgate Road SW to Iroquois Loop.



Listed By:
Keller Williams Classic Rlty NW

Affinity Real Estate Inc. participates in the Regional Multiple Listing Service of Minnesota, Inc Broker Reciprocity (sm) program, allowing us to display other broker's listings on our website. All properties are subject to prior sale, change or withdrawal.



Call Affinity Real Estate

218-237-3333

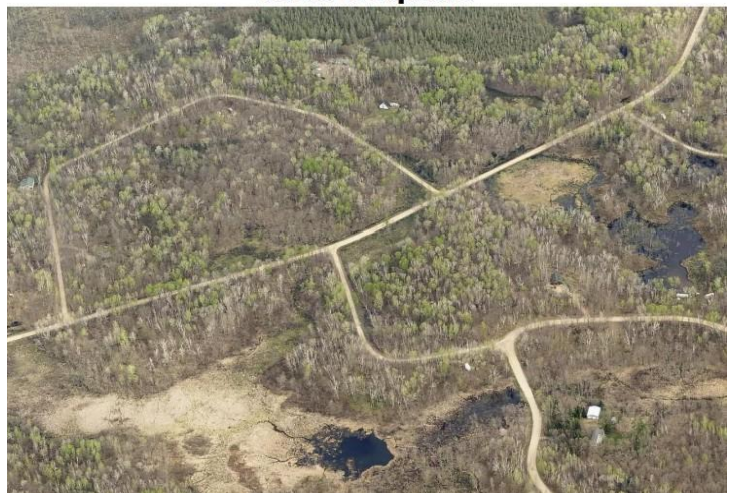
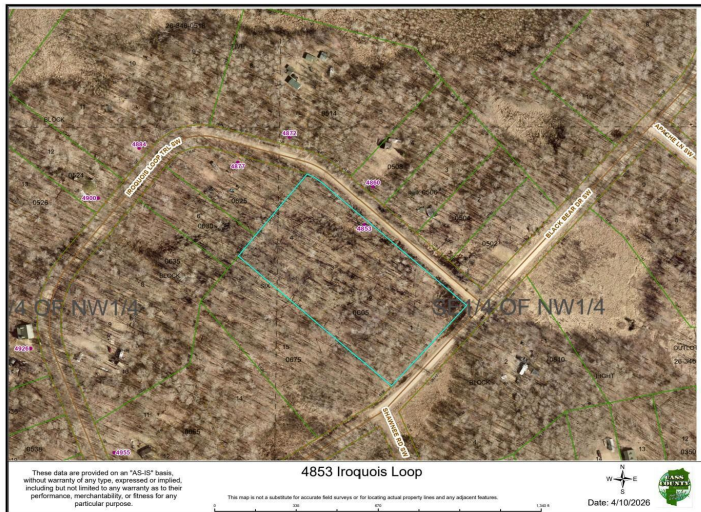
info@affinityrealestate.com



Affinity Real Estate - 600 Park Avenue South - Park Rapids MN 56470



4853 Iroquois



website: www.AffinityRealEstate.com | email: info@affinityrealestate.com | office: 218-237-3333 | fax:218-237-3377



\$65,000
MLS 7052782 Land
4853 Iroquois Loop
Motley MN 56466

website: www.AffinityRealEstate.com | email: info@affinityrealestate.com | office: 218-237-3333 | fax:218-237-3377



\$65,000
MLS 7052782 Land
4853 Iroquois Loop
Motley MN 56466

website: www.AffinityRealEstate.com | email: info@affinityrealestate.com | office: 218-237-3333 | fax:218-237-3377



\$65,000
MLS 7052782 Land
4853 Iroquois Loop
Motley MN 56466