



MLS 7052804 Land

**\$60,000**

1.12 Acres  
Raw Land

20693 County Highway 21  
Detroit Lakes MN 56501

Status: Active

**Description:**

Lake life just got a whole lot easier, and a whole lot more fun, on Little Floyd Lake! This beautiful lot in the Sunrise Common Interest Community offers the perfect opportunity to build your dream home while enjoying resort-style amenities without the hassle. Imagine spending your summers lounging by the outdoor pool, hosting gatherings in the clubhouse, or heading down to Little Floyd Lake to soak up those sunshine-filled days. With affordable CIC dues of \$1,200 per year, you'll enjoy access to the pool, clubhouse, and lake, plus the added convenience of snow removal and lawn care, giving you more time to relax and enjoy the lifestyle.

**Additional Details:**

Year Built	2008
Lot Acres	1.12
Lot Dimensions	1.12 Acres
School District	1074
Taxes	\$388
Taxes with Assessments	\$450
Tax Year	2025

**Additional Features:**

**Driving Directions:**

From Detroit Lakes, Head toward Holmes St W. Turn right(E) onto N St E/Lake Country Scenic Bywy. Turn left (N) onto Co Hwy 21/Richwood Rd. Continue to follow Co Hwy 21

You may also type in 46°52'22.6"N 95°50'22.7"W to your GPS and it will take you to the property.



Listed By:  
Keller Williams Realty Profess

Affinity Real Estate Inc. participates in the Regional Multiple Listing Service of Minnesota, Inc Broker Reciprocity (sm) program, allowing us to display other broker's listings on our website. All properties are subject to prior sale, change or withdrawal.



Call Affinity Real Estate

**218-237-3333**

[info@affinityrealestate.com](mailto:info@affinityrealestate.com)



Affinity Real Estate - 600 Park Avenue South - Park Rapids MN 56470



website: [www.AffinityRealEstate.com](http://www.AffinityRealEstate.com) | email: [info@affinityrealestate.com](mailto:info@affinityrealestate.com) | office: 218-237-3333 | fax:218-237-3377



**\$60,000**  
MLS 7052804 Land  
20693 County Highway 21  
Detroit Lakes MN 56501



website: [www.AffinityRealEstate.com](http://www.AffinityRealEstate.com) | email: [info@affinityrealestate.com](mailto:info@affinityrealestate.com) | office: 218-237-3333 | fax:218-237-3377

**Affinity**  
REAL ESTATE INC

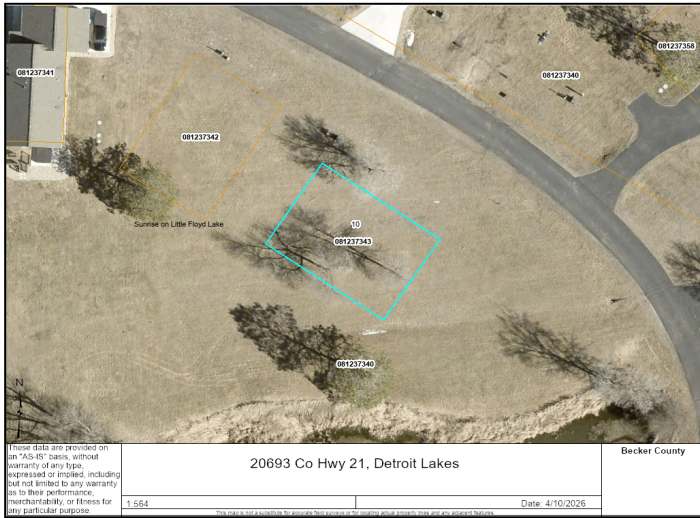
**\$60,000**  
MLS 7052804 Land  
20693 County Highway 21  
Detroit Lakes MN 56501



website: [www.AffinityRealEstate.com](http://www.AffinityRealEstate.com) | email: [info@affinityrealestate.com](mailto:info@affinityrealestate.com) | office: 218-237-3333 | fax:218-237-3377

**Affinity**  
REAL ESTATE INC

**\$60,000**  
MLS 7052804 Land  
20693 County Highway 21  
Detroit Lakes MN 56501



website: [www.AffinityRealEstate.com](http://www.AffinityRealEstate.com) | email: [info@affinityrealestate.com](mailto:info@affinityrealestate.com) | office: 218-237-3333 | fax:218-237-3377



**\$60,000**  
 MLS 7052804 Land  
 20693 County Highway 21  
 Detroit Lakes MN 56501