



MLS 7052841 Land

**\$150,000**

4.11 Acres  
Plat Designed

29575 Deer Lake Lane  
Aitkin MN 56431

Status: Active

**Description:**

Beautiful level 4+ Acre Lake Lot sits on Deer Lake an 80 Acre Lake North of Crosby. Deer Lake is surrounded by some public land and agricultural fields; half of the lake is protected from development. There is no public Access So, it is private with only 8 homes on it. Build your lake cabin & Put in your own dock to enjoy boating, kayaking, and fishing on this tranquil lake. About 15 minutes to wonderful restaurants and shops in Crosby. Enjoy a relaxing evening around the campfire.

Please drive very slowly on the private road as the freeze is coming out, and it may be a little soft. Neighbors and the owner would appreciate it!!!

**Additional Details:**

Lot Acres	4.11
Lot Dimensions	202x882x200x939
School District	2275
Taxes	\$610
Taxes with Assessments	\$592
Tax Year	2026

**Additional Features:**

**Driving Directions:**

From Crosby go North on State HWY 6 to County Rd 11, go right to Spruce Grove Rd. Turn Left, go till Lower Dean Lake and turn Left, turn left at Deer Lake Lane go to almost the end of the private rd. It is the land before the house to the right of the big electric box. This property doesn't have one



Listed By:  
Weichert REALTORS Tower Properties

Affinity Real Estate Inc. participates in the Regional Multiple Listing Service of Minnesota, Inc Broker Reciprocity (sm) program, allowing us to display other broker's listings on our website. All properties are subject to prior sale, change or withdrawal.



**Call Affinity Real Estate**

**218-237-3333**

**info@affinityrealestate.com**



**Affinity Real Estate - 600 Park Avenue South - Park Rapids MN 56470**



website: [www.AffinityRealEstate.com](http://www.AffinityRealEstate.com) | email: [info@affinityrealestate.com](mailto:info@affinityrealestate.com) | office: 218-237-3333 | fax:218-237-3377



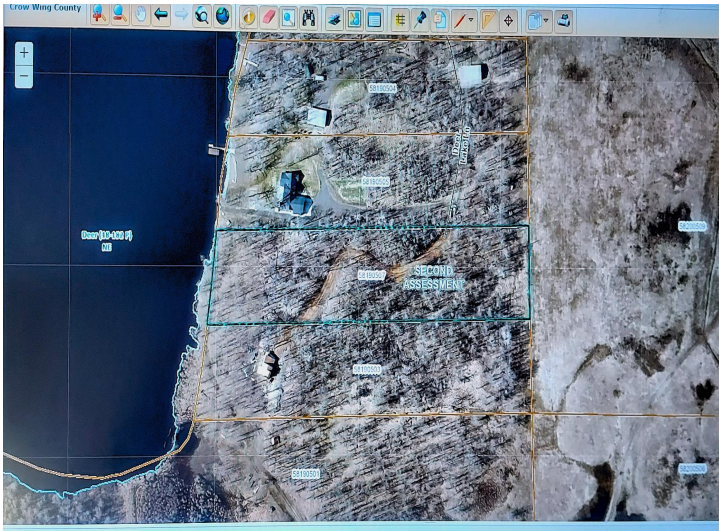
**\$150,000**  
MLS 7052841 Land  
29575 Deer Lake Lane  
Aitkin MN 56431



website: [www.AffinityRealEstate.com](http://www.AffinityRealEstate.com) | email: [info@affinityrealestate.com](mailto:info@affinityrealestate.com) | office: 218-237-3333 | fax:218-237-3377

**Affinity**  
REAL ESTATE INC

**\$150,000**  
MLS 7052841 Land  
29575 Deer Lake Lane  
Aitkin MN 56431



website: [www.AffinityRealEstate.com](http://www.AffinityRealEstate.com) | email: [info@affinityrealestate.com](mailto:info@affinityrealestate.com) | office: 218-237-3333 | fax:218-237-3377



**\$150,000**  
MLS 7052841 Land  
29575 Deer Lake Lane  
Aitkin MN 56431



website: [www.AffinityRealEstate.com](http://www.AffinityRealEstate.com) | email: [info@affinityrealestate.com](mailto:info@affinityrealestate.com) | office: 218-237-3333 | fax:218-237-3377

**Affinity**  
REAL ESTATE INC

**\$150,000**  
MLS 7052841 Land  
29575 Deer Lake Lane  
Aitkin MN 56431



website: [www.AffinityRealEstate.com](http://www.AffinityRealEstate.com) | email: [info@affinityrealestate.com](mailto:info@affinityrealestate.com) | office: 218-237-3333 | fax:218-237-3377



**\$150,000**  
MLS 7052841 Land  
29575 Deer Lake Lane  
Aitkin MN 56431