



MLS 7052920 Lake Home

\$2,074,900

3,000 sq ft
3 bedrooms
3 baths

44047 Little Pine Road
Emily MN 56447

Waterfront: Little Pine Lake (Little Pine Twp.)

Status: Active

Description:

Welcome to Little Pine Lodge, a truly extraordinary 568-acre private retreat offering a rare combination of natural lakeshore, established trails, abundant wildlife, and a handcrafted full log home. With approximately 6,000 feet of lake and natural pond shorelines, miles of scenic beauty, and surrounded by county and state acreage, this one-of-a-kind property delivers remarkable privacy, recreation, and immersion in nature.

The artisan-crafted log home is anchored by a stunning great room with a beautiful stone fireplace, soaring vaulted ceilings, and expansive windows that capture breathtaking lake views and create an ideal setting for gatherings both large and small. Just off the great room, a lakeside screened porch offers the perfect setting for morning coffee, afternoon games, or quiet conversations while taking in the peaceful surroundings. Upstairs, a spacious loft opens to an oversized screened porch, offering additional sleeping space or a serene place to relax and enjoy nature. The home also features a walkout lower level, 2 bedrooms, and 2.5 bathrooms. Thoughtfully designed to bring the outdoors in, this inviting lodge offers warmth, character, and exceptional spaces to enjoy in every season.

With approximately 4,500 feet of frontage on Little Pine Lake, the property offers an extraordinary waterfront experience for kayaking, canoeing, fishing, swimming, and endless enjoyment on the water. From the stunning lake views and peaceful natural shoreline to the bright stars overhead and the occasional glow of the Northern Lights, this remarkable setting captures the beauty and serenity of Northwoods lake living.

The property also includes a substantial 64x40 finished and heated outbuilding with air conditioning in the living area, ideal for storing recreational equipment, hosting guests, relaxing after a day outdoors, or creating the ultimate hobby and game space.

Little Pine Lodge is a true landowner's dream, featuring approximately 8 miles of trails that wind through an extraordinary mix of Northwoods terrain, including beaver ponds, creeks, marshes, meadows, mature woods, and natural shorelines. Rich in habitat and natural beauty, the property offers exceptional opportunities to observe wildlife from thoughtfully placed wildlife stands and viewing areas, with frequent sightings of deer, bear, moose, ducks, turkeys, swans, eagles, wolves, bobcats, beavers, and a wide variety of bird species. Native wildflowers, wild raspberries, wild rice along the lake, and an impressive range of tree species found throughout Crow Wing County further enhance the land's beauty, diversity, and ecological appeal.

Whether enjoying hiking, ATV riding, kayaking, canoeing, fishing, swimming, agate hunting, birdwatching, hunting, snowshoeing, cross-country skiing, snowmobiling, or simply taking in the quiet from the dock or porch, this property is built for unforgettable experiences in every season.

Enrolled in multiple conservation programs, the property benefits from net leases and a \$3,000 per year making this an

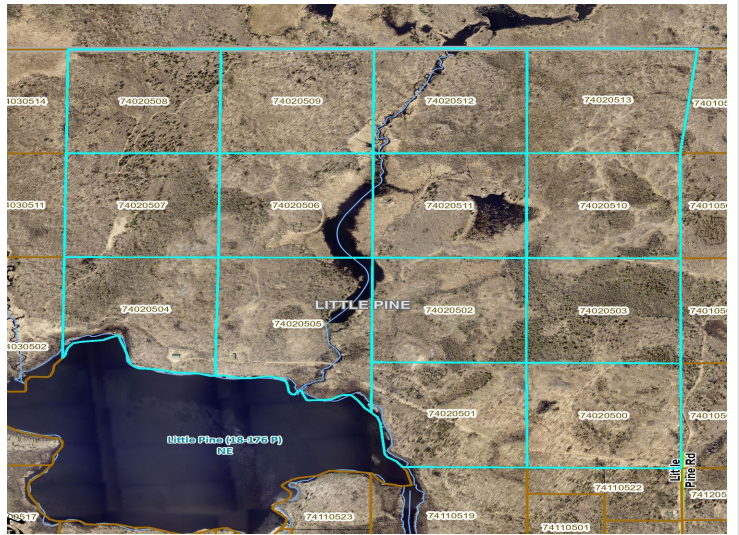
Unit of Brown a legacy-scale holding with significant recreational, scenic, and long-term value.
Pemberton RE
ge up north while over looking the lake. enjoy high speed internet at home!
Affinity Real Estate
Native of Minnesota, Inc Broker Reciprocity (sm) program, allowing
us to display other broker's listings on our website. All properties are
subject to prior sale, change or withdrawal.

Additional Details:

Year Built 2007
Lot Acres 568
Lot Dimensions irrq

Call Affinity Real Estate
218-237-3333
info@affinityrealestate.com

Affinity Real Estate - 600 Park Avenue South - Park Rapids MN 56470



website: www.AffinityRealEstate.com | email: info@affinityrealestate.com | office: 218-237-3333 | fax: 218-237-3377



\$2,074,900
MLS 7052920 Lake Home
44047 Little Pine Road
Emily MN 56447



website: www.AffinityRealEstate.com | email: info@affinityrealestate.com | office: 218-237-3333 | fax: 218-237-3377

Affinity
REAL ESTATE INC

\$2,074,900
MLS 7052920 Lake Home
44047 Little Pine Road
Emily MN 56447



website: www.AffinityRealEstate.com | email: info@affinityrealestate.com | office: 218-237-3333 | fax: 218-237-3377

Affinity
REAL ESTATE INC

\$2,074,900
MLS 7052920 Lake Home
44047 Little Pine Road
Emily MN 56447



website: www.AffinityRealEstate.com | email: info@affinityrealestate.com | office: 218-237-3333 | fax:218-237-3377

Affinity
REAL ESTATE INC

\$2,074,900
MLS 7052920 Lake Home
44047 Little Pine Road
Emily MN 56447



website: www.AffinityRealEstate.com | email: info@affinityrealestate.com | office: 218-237-3333 | fax: 218-237-3377

Affinity
REAL ESTATE INC

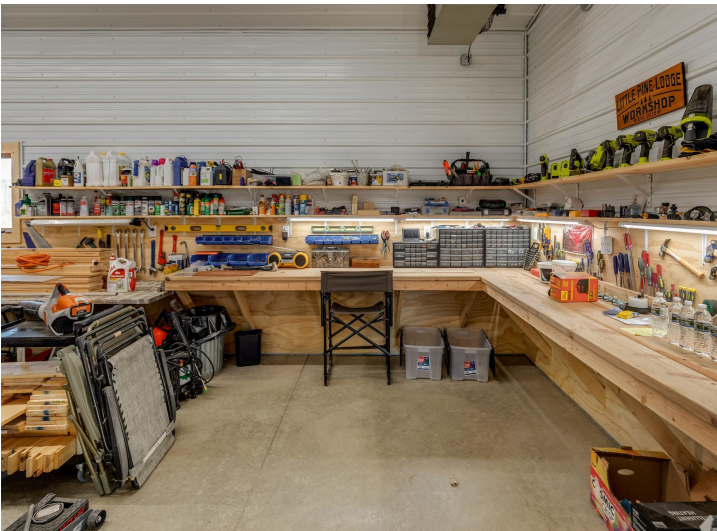
\$2,074,900
MLS 7052920 Lake Home
44047 Little Pine Road
Emily MN 56447



website: www.AffinityRealEstate.com | email: info@affinityrealestate.com | office: 218-237-3333 | fax:218-237-3377



\$2,074,900
MLS 7052920 Lake Home
44047 Little Pine Road
Emily MN 56447



website: www.AffinityRealEstate.com | email: info@affinityrealestate.com | office: 218-237-3333 | fax:218-237-3377

Affinity
REAL ESTATE INC

\$2,074,900
MLS 7052920 Lake Home
44047 Little Pine Road
Emily MN 56447



website: www.AffinityRealEstate.com | email: info@affinityrealestate.com | office: 218-237-3333 | fax:218-237-3377



\$2,074,900
MLS 7052920 Lake Home
44047 Little Pine Road
Emily MN 56447



website: www.AffinityRealEstate.com | email: info@affinityrealestate.com | office: 218-237-3333 | fax:218-237-3377

Affinity
REAL ESTATE INC

\$2,074,900
MLS 7052920 Lake Home
44047 Little Pine Road
Emily MN 56447



website: www.AffinityRealEstate.com | email: info@affinityrealestate.com | office: 218-237-3333 | fax:218-237-3377



\$2,074,900
MLS 7052920 Lake Home
44047 Little Pine Road
Emily MN 56447



website: www.AffinityRealEstate.com | email: info@affinityrealestate.com | office: 218-237-3333 | fax:218-237-3377



\$2,074,900
MLS 7052920 Lake Home
44047 Little Pine Road
Emily MN 56447