



MLS 7052931 Residential

\$779,900

3,238 sq ft
3 bedrooms
2 baths

4783 Goldfinch Circle
Miltona MN 56354

Status: Coming Soon

Description:

Welcome to your wooded privacy haven just 15 minutes to Alexandria! Here is an absolutely stunning home on over 3AC that offers main level living with gorgeous finishes throughout. This custom built home boasts a beautifully appointed kitchen with granite tops, top of the line appliances and accompanying butlers pantry plucked from your dreams! The floor plan of this home is ideal for hosting gatherings yet also warm and cozy to enjoy the peace and quiet of the private surroundings. The attention to quality and detail is sure to impress, and the main level owner's suite features dual vanities, a walk in tile shower, and closet with built ins. The living spaces are comfortable and spacious with 2 fireplaces (one wood burning) and for the wine connoisseur there's a walk in cellar! What?!! You'll love the full home audio system controlled by your phone, and an added bonus is the 30X44 heated and finished garage, and the back patio is the ultimate outdoor escape equipped with a built in grill and fire pit! If you've dreamt of a the private life with a dream home, then dream no longer! *Be sure to check out the supplement to the listing for a list of numerous recent improvements the owners have made to the home or ask your agent for a copy*

Additional Details:


Year Built	2012
Lot Acres	3.14
Lot Dimensions	553x200x611x179
Garage Stalls	3
School District	1015
Taxes	\$5,536
Taxes with Assessments	\$5,536
Tax Year	2026

Additional Features:

Basement: None **Fuel:** Array **Garage:** 3 **Heat:** Ductless Mini-Split, Forced Air, Fireplace(s) **Sewer:** Septic System Compliant - Yes **Water:** Private, Well **Air Conditioning:** Ductless Mini-Split

Driving Directions:

Hwy 29N to Rt on Goldfinch Circle



Listed By:
Kvale Real Estate

Affinity Real Estate Inc. participates in the Regional Multiple Listing Service of Minnesota, Inc Broker Reciprocity (sm) program, allowing us to display other broker's listings on our website. All properties are subject to prior sale, change or withdrawal.



Call Affinity Real Estate

218-237-3333

info@affinityrealestate.com



Affinity Real Estate - 600 Park Avenue South - Park Rapids MN 56470



website: www.AffinityRealEstate.com | email: info@affinityrealestate.com | office: 218-237-3333 | fax:218-237-3377



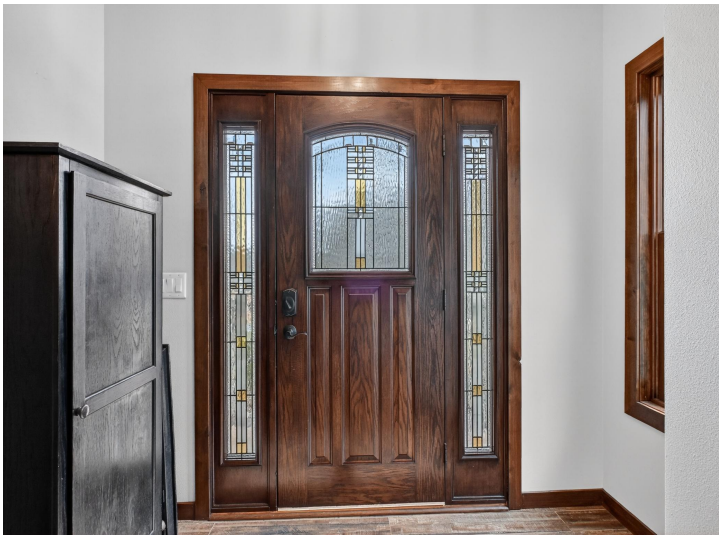
\$779,900
MLS 7052931 Residential
4783 Goldfinch Circle
Miltona MN 56354



website: www.AffinityRealEstate.com | email: info@affinityrealestate.com | office: 218-237-3333 | fax:218-237-3377



\$779,900
MLS 7052931 Residential
4783 Goldfinch Circle
Miltona MN 56354



website: www.AffinityRealEstate.com | email: info@affinityrealestate.com | office: 218-237-3333 | fax: 218-237-3377

Affinity
REAL ESTATE INC

\$779,900
MLS 7052931 Residential
4783 Goldfinch Circle
Miltona MN 56354



website: www.AffinityRealEstate.com | email: info@affinityrealestate.com | office: 218-237-3333 | fax: 218-237-3377

Affinity
REAL ESTATE INC

\$779,900
MLS 7052931 Residential
4783 Goldfinch Circle
Miltona MN 56354



website: www.AffinityRealEstate.com | email: info@affinityrealestate.com | office: 218-237-3333 | fax: 218-237-3377

Affinity
REAL ESTATE INC

\$779,900
MLS 7052931 Residential
4783 Goldfinch Circle
Miltona MN 56354



website: www.AffinityRealEstate.com | email: info@affinityrealestate.com | office: 218-237-3333 | fax: 218-237-3377

Affinity
REAL ESTATE INC

\$779,900
MLS 7052931 Residential
4783 Goldfinch Circle
Miltona MN 56354



website: www.AffinityRealEstate.com | email: info@affinityrealestate.com | office: 218-237-3333 | fax: 218-237-3377

Affinity
REAL ESTATE INC

\$779,900
MLS 7052931 Residential
4783 Goldfinch Circle
Miltona MN 56354



website: www.AffinityRealEstate.com | email: info@affinityrealestate.com | office: 218-237-3333 | fax: 218-237-3377

Affinity
REAL ESTATE INC

\$779,900
MLS 7052931 Residential
4783 Goldfinch Circle
Miltona MN 56354



website: www.AffinityRealEstate.com | email: info@affinityrealestate.com | office: 218-237-3333 | fax:218-237-3377



\$779,900
MLS 7052931 Residential
4783 Goldfinch Circle
Miltona MN 56354



website: www.AffinityRealEstate.com | email: info@affinityrealestate.com | office: 218-237-3333 | fax: 218-237-3377

Affinity
REAL ESTATE INC

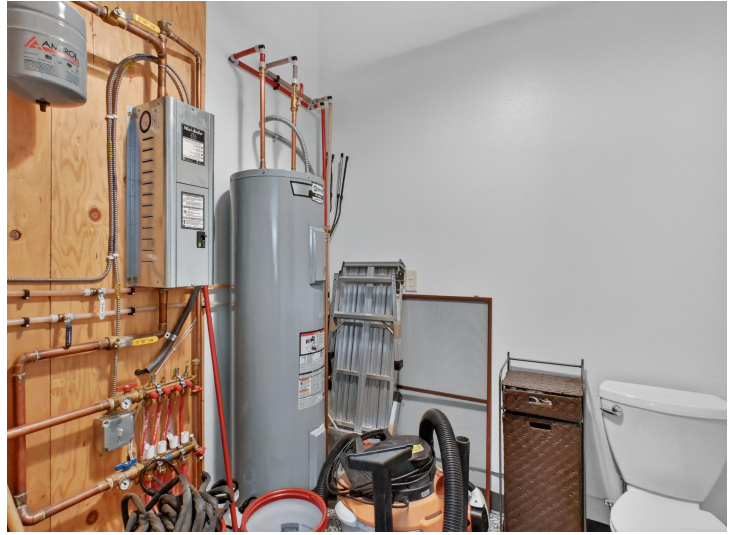
\$779,900
MLS 7052931 Residential
4783 Goldfinch Circle
Miltona MN 56354



website: www.AffinityRealEstate.com | email: info@affinityrealestate.com | office: 218-237-3333 | fax:218-237-3377

Affinity
REAL ESTATE INC

\$779,900
MLS 7052931 Residential
4783 Goldfinch Circle
Miltona MN 56354



website: www.AffinityRealEstate.com | email: info@affinityrealestate.com | office: 218-237-3333 | fax:218-237-3377

Affinity
REAL ESTATE INC

\$779,900
MLS 7052931 Residential
4783 Goldfinch Circle
Miltona MN 56354



website: www.AffinityRealEstate.com | email: info@affinityrealestate.com | office: 218-237-3333 | fax: 218-237-3377

Affinity
REAL ESTATE INC

\$779,900
MLS 7052931 Residential
4783 Goldfinch Circle
Miltona MN 56354



website: www.AffinityRealEstate.com | email: info@affinityrealestate.com | office: 218-237-3333 | fax: 218-237-3377

Affinity
REAL ESTATE INC

\$779,900
MLS 7052931 Residential
4783 Goldfinch Circle
Miltona MN 56354



website: www.AffinityRealEstate.com | email: info@affinityrealestate.com | office: 218-237-3333 | fax: 218-237-3377

Affinity
REAL ESTATE INC

\$779,900
MLS 7052931 Residential
4783 Goldfinch Circle
Miltona MN 56354



website: www.AffinityRealEstate.com | email: info@affinityrealestate.com | office: 218-237-3333 | fax:218-237-3377

Affinity
REAL ESTATE INC

\$779,900
MLS 7052931 Residential
4783 Goldfinch Circle
Miltona MN 56354