



MLS 7053085 Residential

**\$549,000**

2,412 sq ft  
2 bedrooms  
2 baths

26837 Lake Ethel Road  
Battle Lake MN 56515

Status: Active

**Description:**

Welcome to your year-round retreat nestled on the sandy shores of Ethel Lake! This stunning 1.4-acre property offers 169 feet of private lakefront with a gentle slope leading to a beautiful sandy beach — perfect for swimming, boating, and relaxing in the sun. Minnesota DNR site lists the clarity of Ethel Lake 18 feet.

The spacious 2,520 sq ft home features 2 bedrooms, [master bedroom includes walk in closet] and 2 bathrooms, thoughtfully designed for comfort and style. Cozy up by either of the two gas fireplaces on cooler evenings, and enjoy scenic lake views from your living and dining areas.

Storage and convenience abound with a large 3-stall attached garage, two stalls of which are heated and insulated — ideal for year-round use. For even more space, a 30x40 3-stall pole shed provides ample room for all your toys and tools.

Additional highlights include:


2026 new flooring in kitchen, dining and living room. Arvig fiber optic internet available.  
Paved tar driveway

Lawn irrigation system for easy maintenance landscaped yard  
Peaceful setting with mature trees

Whether you're looking for a full-time residence or a serene lake getaway, this property combines comfort, functionality, and the unbeatable charm of lakefront living. Furniture is negotiable.

**Additional Details:**

Year Built	1994
Lot Acres	1.403
Lot Dimensions	169x363
Garage Stalls	3
School District	542
Taxes	\$2,902


 Listed By: **Bohl Realty**  
 Agents: \$2,902  
 Boll Realty: 2025

**Additional Features:**  
 Affinity Real Estate Inc. participates in the Regional Multiple Listing Service of Minnesota, Inc Broker Reciprocity (sm) program, allowing  
 Base on the Broker's Website. All properties are  
 with Dual Paneled Windows, Air Conditioning: Central Air



**Call Affinity Real Estate**  
**218-237-3333**  
**info@affinityrealestate.com**




 Forced Air Sewer: Tank

Affinity Real Estate - 600 Park Avenue South - Park Rapids MN 56470

**Driving Directions:**



website: [www.AffinityRealEstate.com](http://www.AffinityRealEstate.com) | email: [info@affinityrealestate.com](mailto:info@affinityrealestate.com) | office: 218-237-3333 | fax:218-237-3377

**Affinity**  
REAL ESTATE INC

**\$549,000**  
MLS 7053085 Residential  
26837 Lake Ethel Road  
Battle Lake MN 56515



website: [www.AffinityRealEstate.com](http://www.AffinityRealEstate.com) | email: [info@affinityrealestate.com](mailto:info@affinityrealestate.com) | office: 218-237-3333 | fax:218-237-3377

**Affinity**  
REAL ESTATE INC

**\$549,000**  
MLS 7053085 Residential  
26837 Lake Ethel Road  
Battle Lake MN 56515



website: [www.AffinityRealEstate.com](http://www.AffinityRealEstate.com) | email: [info@affinityrealestate.com](mailto:info@affinityrealestate.com) | office: 218-237-3333 | fax:218-237-3377

**Affinity**  
REAL ESTATE INC

**\$549,000**  
MLS 7053085 Residential  
26837 Lake Ethel Road  
Battle Lake MN 56515



website: [www.AffinityRealEstate.com](http://www.AffinityRealEstate.com) | email: [info@affinityrealestate.com](mailto:info@affinityrealestate.com) | office: 218-237-3333 | fax:218-237-3377



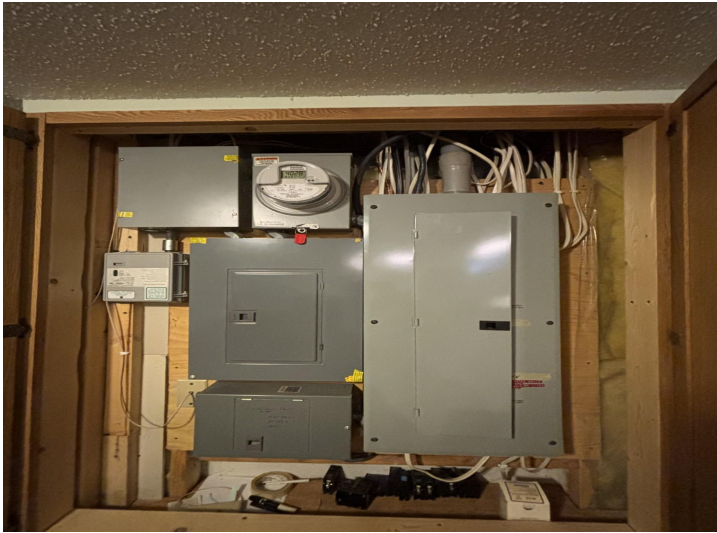
**\$549,000**  
MLS 7053085 Residential  
26837 Lake Ethel Road  
Battle Lake MN 56515



website: [www.AffinityRealEstate.com](http://www.AffinityRealEstate.com) | email: [info@affinityrealestate.com](mailto:info@affinityrealestate.com) | office: 218-237-3333 | fax:218-237-3377

**Affinity**  
REAL ESTATE INC

**\$549,000**  
MLS 7053085 Residential  
26837 Lake Ethel Road  
Battle Lake MN 56515



website: [www.AffinityRealEstate.com](http://www.AffinityRealEstate.com) | email: [info@affinityrealestate.com](mailto:info@affinityrealestate.com) | office: 218-237-3333 | fax:218-237-3377



**\$549,000**  
MLS 7053085 Residential  
26837 Lake Ethel Road  
Battle Lake MN 56515



website: [www.AffinityRealEstate.com](http://www.AffinityRealEstate.com) | email: [info@affinityrealestate.com](mailto:info@affinityrealestate.com) | office: 218-237-3333 | fax:218-237-3377



**\$549,000**  
MLS 7053085 Residential  
26837 Lake Ethel Road  
Battle Lake MN 56515



website: [www.AffinityRealEstate.com](http://www.AffinityRealEstate.com) | email: [info@affinityrealestate.com](mailto:info@affinityrealestate.com) | office: 218-237-3333 | fax:218-237-3377

**Affinity**  
REAL ESTATE INC

**\$549,000**  
MLS 7053085 Residential  
26837 Lake Ethel Road  
Battle Lake MN 56515



website: [www.AffinityRealEstate.com](http://www.AffinityRealEstate.com) | email: [info@affinityrealestate.com](mailto:info@affinityrealestate.com) | office: 218-237-3333 | fax:218-237-3377



**\$549,000**  
MLS 7053085 Residential  
26837 Lake Ethel Road  
Battle Lake MN 56515



website: [www.AffinityRealEstate.com](http://www.AffinityRealEstate.com) | email: [info@affinityrealestate.com](mailto:info@affinityrealestate.com) | office: 218-237-3333 | fax:218-237-3377

**Affinity**  
REAL ESTATE INC

**\$549,000**  
MLS 7053085 Residential  
26837 Lake Ethel Road  
Battle Lake MN 56515



website: [www.AffinityRealEstate.com](http://www.AffinityRealEstate.com) | email: [info@affinityrealestate.com](mailto:info@affinityrealestate.com) | office: 218-237-3333 | fax:218-237-3377



**\$549,000**  
MLS 7053085 Residential  
26837 Lake Ethel Road  
Battle Lake MN 56515