



MLS 7053118 Residential

**\$449,900**

2,592 sq ft  
4 bedrooms  
2 baths

21666 Bay Port Place  
Cohasset MN 55721

Status: Active

**Description:**

Ten acres in Cohasset with a 4 bedroom, 2 bathroom house and attached 2-car garage, a newer mound septic system, and proximity to some of the area's best lakes — this property checks boxes that are hard to find in one package. A chicken coop on the grounds adds a practical homesteading element, and the land itself offers real room to spread out. Inside, the main level flows from a dedicated entry into an open layout anchored by a natural gas fireplace. A den/office provides a quiet work-from-home setup or flex room. The walkout basement opens the lower level to natural light and direct access to the backyard, adding usable square footage beyond the main floor. The stamped concrete patio just outside and sprawling deck connects indoor and outdoor living and makes for an easy gathering spot year-round. The 10-acre lot includes established apple trees and a pear tree — productive landscaping that rewards every season. The new patio sits within a quiet neighborhood setting, and the surrounding property is large enough to support gardens, animals, or future outbuildings. Location puts you close to great lakes without a long drive from town, keeping daily errands and weekend recreation within easy reach. A well-situated home on acreage with a compliant septic, attached garage, fruit trees, and lake access nearby. Hard to beat!

**Additional Details:**

|                        |         |
|------------------------|---------|
| Year Built             | 2004    |
| Lot Acres              | 10      |
| Lot Dimensions         | 660x660 |
| Garage Stalls          | 2       |
| School District        | 1410    |
| Taxes                  | \$2,183 |
| Taxes with Assessments | \$2,264 |
| Tax Year               | 2025    |

**Additional Features:**

**Fuel:** Array **Heat:** Boiler, Fireplace(s)

**Driving Directions:**

Going West on US Hwy 2, head south on Co Rd 63. Turn South onto Co Rd 17 and take a left to keep on Co Rd 17 before taking a left onto Bay Port Place. House is on the right.



Listed By:  
Pemberton RE

Affinity Real Estate Inc. participates in the Regional Multiple Listing Service of Minnesota, Inc Broker Reciprocity (sm) program, allowing us to display other broker's listings on our website. All properties are subject to prior sale, change or withdrawal.



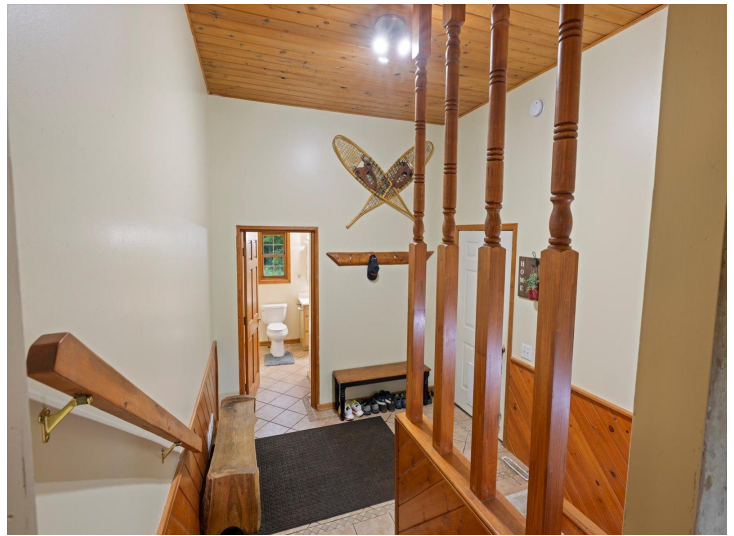
**Call Affinity Real Estate**

**218-237-3333**

**info@affinityrealestate.com**



Affinity Real Estate - 600 Park Avenue South - Park Rapids MN 56470



website: [www.AffinityRealEstate.com](http://www.AffinityRealEstate.com) | email: [info@affinityrealestate.com](mailto:info@affinityrealestate.com) | office: 218-237-3333 | fax: 218-237-3377

**Affinity**  
REAL ESTATE INC

**\$449,900**  
MLS 7053118 Residential  
21666 Bay Port Place  
Cohasset MN 55721



website: [www.AffinityRealEstate.com](http://www.AffinityRealEstate.com) | email: [info@affinityrealestate.com](mailto:info@affinityrealestate.com) | office: 218-237-3333 | fax:218-237-3377

**Affinity**  
REAL ESTATE INC

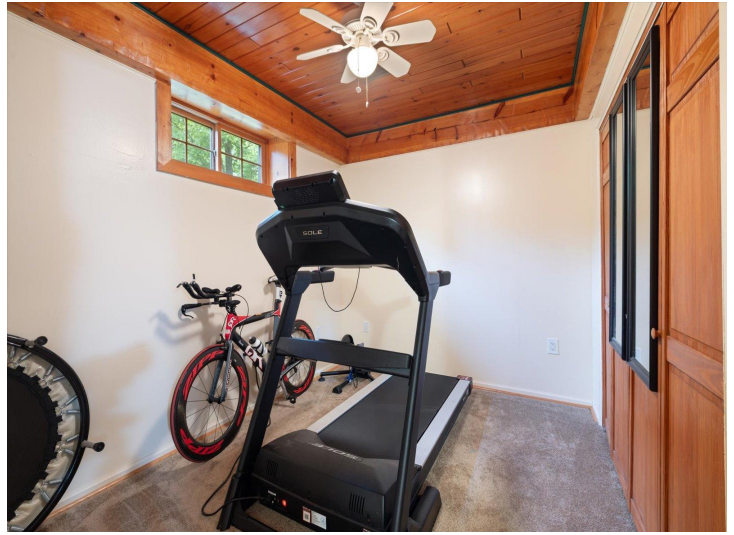
**\$449,900**  
MLS 7053118 Residential  
21666 Bay Port Place  
Cohasset MN 55721



website: [www.AffinityRealEstate.com](http://www.AffinityRealEstate.com) | email: [info@affinityrealestate.com](mailto:info@affinityrealestate.com) | office: 218-237-3333 | fax:218-237-3377

**Affinity**  
REAL ESTATE INC

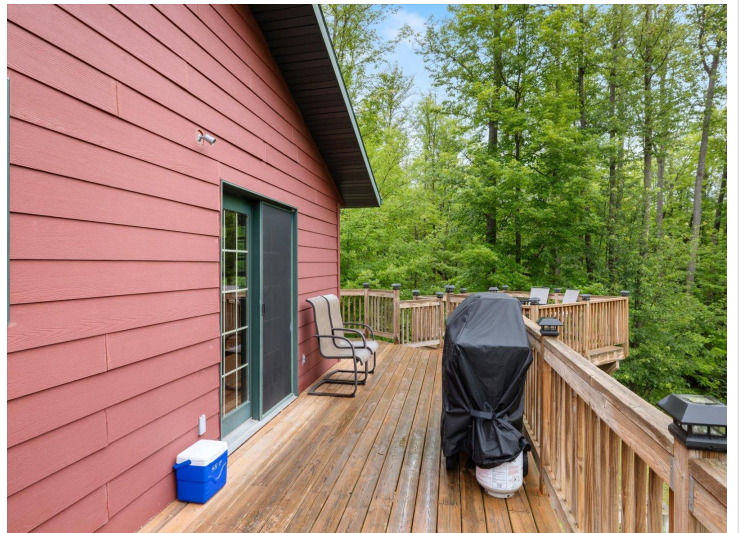
**\$449,900**  
MLS 7053118 Residential  
21666 Bay Port Place  
Cohasset MN 55721



website: [www.AffinityRealEstate.com](http://www.AffinityRealEstate.com) | email: [info@affinityrealestate.com](mailto:info@affinityrealestate.com) | office: 218-237-3333 | fax:218-237-3377

**Affinity**  
REAL ESTATE INC

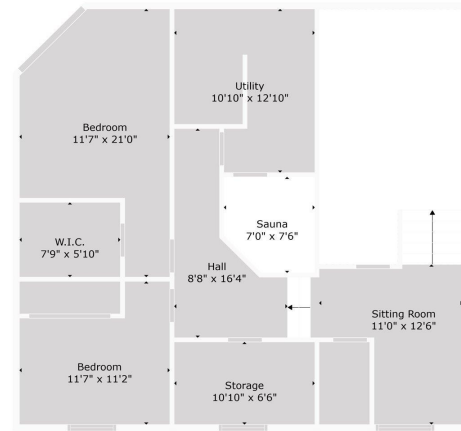
**\$449,900**  
MLS 7053118 Residential  
21666 Bay Port Place  
Cohasset MN 55721



website: [www.AffinityRealEstate.com](http://www.AffinityRealEstate.com) | email: [info@affinityrealestate.com](mailto:info@affinityrealestate.com) | office: 218-237-3333 | fax:218-237-3377

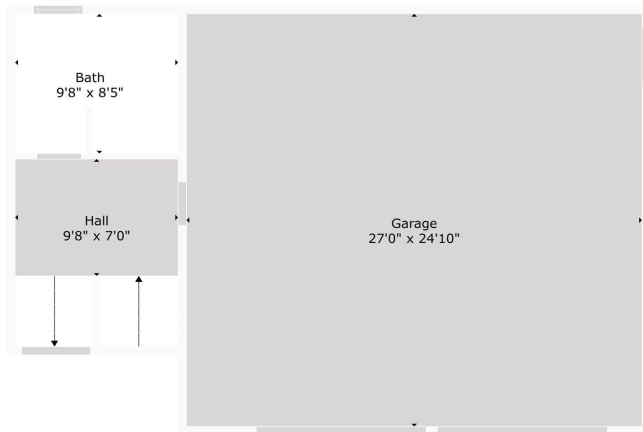
**Affinity**  
REAL ESTATE INC

**\$449,900**  
MLS 7053118 Residential  
21666 Bay Port Place  
Cohasset MN 55721



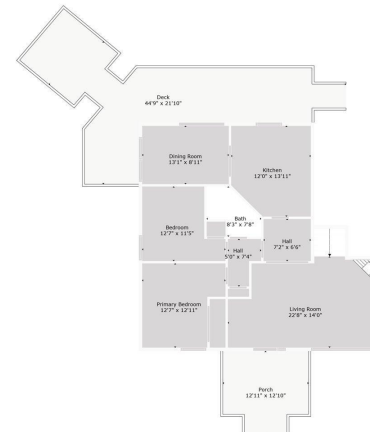
TOTAL: 2022 sq. ft.  
 FLOOR 1: 804 sq. ft., FLOOR 2: 103 sq. ft., FLOOR 3: 1025 sq. ft.  
 EXCLUDED AREAS: STORAGE: 70 sq. ft., LOW CEILING: 221 sq. ft., GARAGE: 669 sq. ft.,  
 PORCH: 145 sq. ft., DECK: 472 sq. ft.  
 WALLS: 208 sq. ft.

Floor Plan Created By Calixtus App. Measurements Deemed Highly Reliable But Not Guaranteed.



TOTAL: 2022 sq. ft.  
 FLOOR 1: 804 sq. ft., FLOOR 2: 103 sq. ft., FLOOR 3: 1025 sq. ft.  
 EXCLUDED AREAS: STORAGE: 70 sq. ft., LOW CEILING: 221 sq. ft., GARAGE: 669 sq. ft.,  
 PORCH: 145 sq. ft., DECK: 472 sq. ft.  
 WALLS: 208 sq. ft.

Floor Plan Created By Calixtus App. Measurements Deemed Highly Reliable But Not Guaranteed.



TOTAL: 2022 sq. ft.  
 FLOOR 1: 804 sq. ft., FLOOR 2: 103 sq. ft., FLOOR 3: 1025 sq. ft.  
 EXCLUDED AREAS: STORAGE: 70 sq. ft., LOW CEILING: 221 sq. ft., GARAGE: 669 sq. ft.,  
 PORCH: 145 sq. ft., DECK: 472 sq. ft.  
 WALLS: 208 sq. ft.

Floor Plan Created By Calixtus App. Measurements Deemed Highly Reliable But Not Guaranteed.

website: [www.AffinityRealEstate.com](http://www.AffinityRealEstate.com) | email: [info@affinityrealestate.com](mailto:info@affinityrealestate.com) | office: 218-237-3333 | fax: 218-237-3377



**\$449,900**  
 MLS 7053118 Residential  
 21666 Bay Port Place  
 Cohasset MN 55721