



MLS 7053184 Land

**\$49,900**

4.5 Acres  
Raw Land

TBD4 Destination Drive  
Nevis MN 56467

Status: Active

**Description:**

This Nevis country lot features over 4.5 acres of scenic privacy. Just minutes away from downtown Nevis, the Heartland Trail, and Paul Bunyan State Forest. This would be an ideal location to build your dream home. Call for an appointment today.

**Additional Details:**

Lot Acres	4.5
Lot Dimensions	194x79x144x254x619x398
School District	1380
Taxes	\$62
Taxes with Assessments	\$62
Tax Year	2025

**Additional Features:**

**Driving Directions:**

From Nevis Highway 34/County 13 head South on County 13 to Destination Drive. Then head West on Destination Drive to property on Left, Lot 4.



Listed By:  
Wolff & Simon Real Estate

Affinity Real Estate Inc. participates in the Regional Multiple Listing Service of Minnesota, Inc Broker Reciprocity (sm) program, allowing us to display other broker's listings on our website. All properties are subject to prior sale, change or withdrawal.



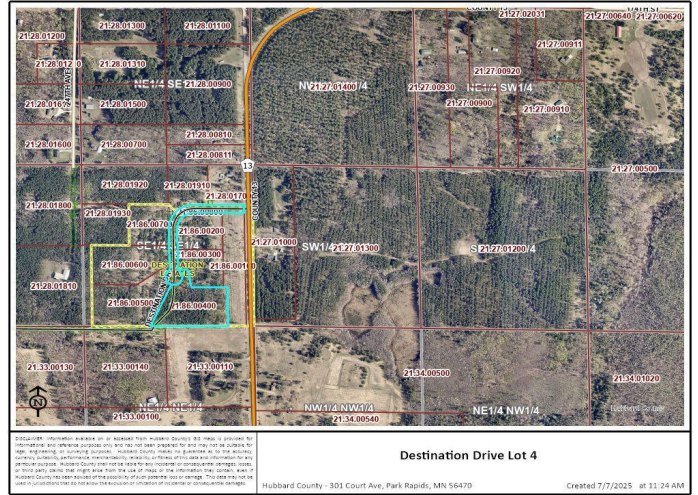
Call Affinity Real Estate

**218-237-3333**

[info@affinityrealestate.com](mailto:info@affinityrealestate.com)



Affinity Real Estate - 600 Park Avenue South - Park Rapids MN 56470



website: [www.AffinityRealEstate.com](http://www.AffinityRealEstate.com) | email: [info@affinityrealestate.com](mailto:info@affinityrealestate.com) | office: 218-237-3333 | fax: 218-237-3377



**\$49,900**  
 MLS 7053184 Land  
 TBD4 Destination Drive  
 Nevis MN 56467



website: [www.AffinityRealEstate.com](http://www.AffinityRealEstate.com) | email: [info@affinityrealestate.com](mailto:info@affinityrealestate.com) | office: 218-237-3333 | fax:218-237-3377



**\$49,900**  
MLS 7053184 Land  
TBD4 Destination Drive  
Nevis MN 56467