



MLS 7053359 Residential

**\$335,000**

1,938 sq ft  
3 bedrooms  
2 baths

13080 Homestead Drive  
Baxter MN 56425

Status: Active

**Description:**

Country living feel with over 2 acres and the convenience of being close to Perch Lake and easy access to 371. Completely remodeled interior featuring 3 bedrooms, 2 baths, a 2 car attached garage plus an oversized 1 car detached. Surrounded by Nature!

**Additional Details:**

Year Built	1988
Lot Acres	2.19
Lot Dimensions	100x955
Garage Stalls	3
School District	896
Taxes	\$2,606
Taxes with Assessments	\$2,606
Tax Year	2026

**Additional Features:**

**Basement:** Finished, Full **Fuel:** Array **Garage:** 3 **Heat:** Baseboard, Boiler, Hot Water **Sewer:** City Sewer/Connected **Water:** City Water/Connected **Air Conditioning:** None

**Driving Directions:**

From intersection of Hwy 371 & 210, go South on 371 to right on Glory Road, turn left on Homestead, home is on left.



Listed By:  
Premier Real Estate Services

Affinity Real Estate Inc. participates in the Regional Multiple Listing Service of Minnesota, Inc Broker Reciprocity (sm) program, allowing us to display other broker's listings on our website. All properties are subject to prior sale, change or withdrawal.



Call Affinity Real Estate

**218-237-3333**

[info@affinityrealestate.com](mailto:info@affinityrealestate.com)



Affinity Real Estate - 600 Park Avenue South - Park Rapids MN 56470



website: [www.AffinityRealEstate.com](http://www.AffinityRealEstate.com) | email: [info@affinityrealestate.com](mailto:info@affinityrealestate.com) | office: 218-237-3333 | fax:218-237-3377



**\$335,000**  
MLS 7053359 Residential  
13080 Homestead Drive  
Baxter MN 56425



website: [www.AffinityRealEstate.com](http://www.AffinityRealEstate.com) | email: [info@affinityrealestate.com](mailto:info@affinityrealestate.com) | office: 218-237-3333 | fax:218-237-3377

**Affinity**  
REAL ESTATE INC

**\$335,000**  
MLS 7053359 Residential  
13080 Homestead Drive  
Baxter MN 56425



website: [www.AffinityRealEstate.com](http://www.AffinityRealEstate.com) | email: [info@affinityrealestate.com](mailto:info@affinityrealestate.com) | office: 218-237-3333 | fax: 218-237-3377

**Affinity**  
REAL ESTATE INC

**\$335,000**  
MLS 7053359 Residential  
13080 Homestead Drive  
Baxter MN 56425



website: [www.AffinityRealEstate.com](http://www.AffinityRealEstate.com) | email: [info@affinityrealestate.com](mailto:info@affinityrealestate.com) | office: 218-237-3333 | fax:218-237-3377



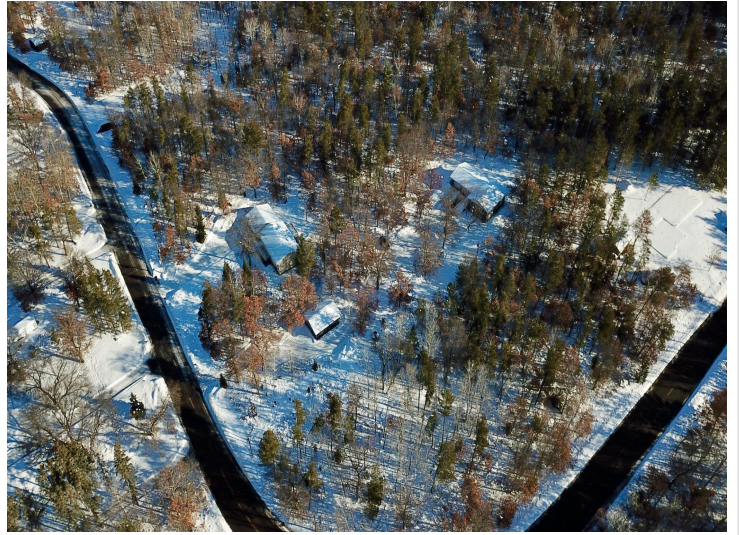
**\$335,000**  
MLS 7053359 Residential  
13080 Homestead Drive  
Baxter MN 56425



website: [www.AffinityRealEstate.com](http://www.AffinityRealEstate.com) | email: [info@affinityrealestate.com](mailto:info@affinityrealestate.com) | office: 218-237-3333 | fax:218-237-3377

**Affinity**  
REAL ESTATE INC

**\$335,000**  
MLS 7053359 Residential  
13080 Homestead Drive  
Baxter MN 56425



website: [www.AffinityRealEstate.com](http://www.AffinityRealEstate.com) | email: [info@affinityrealestate.com](mailto:info@affinityrealestate.com) | office: 218-237-3333 | fax:218-237-3377

**Affinity**  
REAL ESTATE INC

**\$335,000**  
MLS 7053359 Residential  
13080 Homestead Drive  
Baxter MN 56425



website: [www.AffinityRealEstate.com](http://www.AffinityRealEstate.com) | email: [info@affinityrealestate.com](mailto:info@affinityrealestate.com) | office: 218-237-3333 | fax:218-237-3377



**\$335,000**  
MLS 7053359 Residential  
13080 Homestead Drive  
Baxter MN 56425