



MLS 7053422 Residential

\$149,900

0 sq ft
2 bedrooms
1 baths

28274 Orb Drive
Browerville MN 56438

Status: Active

Description:

2025 Constructed Patio Home is being sold unfinished in as is condition.
2 Bedrooms and a 3/4 Bath.
1120 Square feet (28 x 40 foundation)
In-floor heat roughed in.
Plumbing roughed in.
Septic has been installed
Includes Well
Electric was brought to the lot corner.

Sits on a half acre lot with a view of a Pond.
And only a few blocks to Turtle Lake Public Access

Enjoy PRIVATE amenities such as Access to 4 lakes and the River nearby, Year Round Clubhouse on Fawn Lake with a pool and beach, sports courts, and more. ATV Friendly and on the snowmobile trail, Roads are maintained and plowed for year round enjoyment. One Hour NW of St. Cloud. Two Hours from the Twin Cities Area.

Additional Details:

Year Built	2025
Lot Acres	0.477
Lot Dimensions	100 x 209 x 95 x 224
School District	1062
Taxes	\$58
Taxes with Assessments	\$58
Tax Year	2026

Additional Features:

Basement: None **Fuel:** Array **Heat:** None **Sewer:** Septic System Compliant - Yes **Water:** None **Air Conditioning:** None

Driving Directions:

 Listed By:
Smart Choice Realty

Affinity Real Estate Inc. participates in the Regional Multiple Listing Service of Minnesota, Inc Broker Reciprocity (sm) program, allowing us to display other broker's listings on our website. All properties are subject to prior sale, change or withdrawal.



Call Affinity Real Estate

218-237-3333

info@affinityrealestate.com



Affinity Real Estate - 600 Park Avenue South - Park Rapids MN 56470



website: www.AffinityRealEstate.com | email: info@affinityrealestate.com | office: 218-237-3333 | fax: 218-237-3377

Affinity
REAL ESTATE INC

\$149,900
MLS 7053422 Residential
28274 Orb Drive
Browerville MN 56438



website: www.AffinityRealEstate.com | email: info@affinityrealestate.com | office: 218-237-3333 | fax: 218-237-3377

Affinity
REAL ESTATE INC

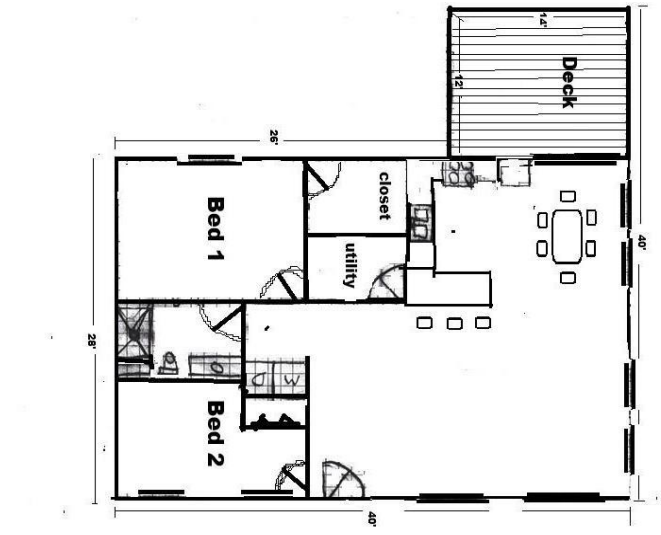
\$149,900
MLS 7053422 Residential
28274 Orb Drive
Browerville MN 56438



website: www.AffinityRealEstate.com | email: info@affinityrealestate.com | office: 218-237-3333 | fax: 218-237-3377

Affinity
REAL ESTATE INC

\$149,900
MLS 7053422 Residential
28274 Orb Drive
Browerville MN 56438



website: www.AffinityRealEstate.com | email: info@affinityrealestate.com | office: 218-237-3333 | fax: 218-237-3377



\$149,900
MLS 7053422 Residential
28274 Orb Drive
Browerville MN 56438



FAWN LAKE BEACH
LIVING THE SSPOA LIFE

website: www.AffinityRealEstate.com | email: info@affinityrealestate.com | office: 218-237-3333 | fax:218-237-3377



\$149,900
MLS 7053422 Residential
28274 Orb Drive
Browerville MN 56438