



MLS 7053455 Residential

\$284,999

2,794 sq ft
4 bedrooms
2 baths

39437 County Road 3
Crosslake MN 56442

Status: Active



Description:

Discover your slice of paradise in the heart of Minnesota's stunning lake country! This inviting 4-bedroom, 2-bathroom home is nestled on 2 picturesque wooded acres, just minutes from Fifty Lakes and a quick drive to Crosslake. Whether you're seeking a full-time residence, a weekend getaway, or a smart investment, this property offers the perfect blend of comfort, space, and convenience. The main level features a bright and airy living area with large windows for abundant natural light, a convenient full bathroom, and a spacious primary bedroom for restful nights. Upstairs, you'll find three additional cozy bedrooms, along with another full bathroom for added convenience. The inviting family room downstairs is perfect for unwinding or entertaining guests. The expansive yard provides endless possibilities for outdoor enjoyment, gardening, or future expansions like a garage or pole barn. With countless lakes, trails, and recreational activities nearby, you'll embrace the quintessential up-north lifestyle that this property promises. Don't miss out on this unique opportunity!

Additional Details:

Year Built	1985
Lot Acres	2.01
Lot Dimensions	334x263x332x263
Garage Stalls	2
School District	1065
Taxes	\$1,350
Taxes with Assessments	\$1,350
Tax Year	2025

Additional Features:

Basement: Block, Full **Fuel:** Array **Garage:** 2 **Heat:** Boiler, Hot Water **Sewer:** Septic System Compliant - Yes, Tank with Drainage Field
Water: 4-Inch Submersible, Drilled **Air Conditioning:** Window Unit(s)

Driving Directions:

From Crosslake, North on Co 3 to Fire# 39437. Property will be on the Left



Listed By:
Coldwell Banker Realty

Affinity Real Estate Inc. participates in the Regional Multiple Listing Service of Minnesota, Inc Broker Reciprocity (sm) program, allowing us to display other broker's listings on our website. All properties are subject to prior sale, change or withdrawal.



Call Affinity Real Estate

218-237-3333

info@affinityrealestate.com



Affinity Real Estate - 600 Park Avenue South - Park Rapids MN 56470



website: www.AffinityRealEstate.com | email: info@affinityrealestate.com | office: 218-237-3333 | fax:218-237-3377

Affinity
REAL ESTATE INC

\$284,999
MLS 7053455 Residential
39437 County Road 3
Crosslake MN 56442



website: www.AffinityRealEstate.com | email: info@affinityrealestate.com | office: 218-237-3333 | fax:218-237-3377

Affinity
REAL ESTATE INC

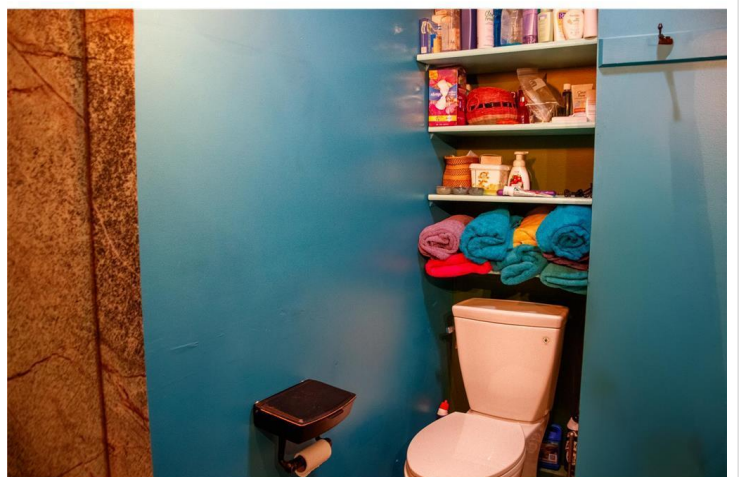
\$284,999
MLS 7053455 Residential
39437 County Road 3
Crosslake MN 56442



website: www.AffinityRealEstate.com | email: info@affinityrealestate.com | office: 218-237-3333 | fax:218-237-3377

Affinity
REAL ESTATE INC

\$284,999
MLS 7053455 Residential
39437 County Road 3
Crosslake MN 56442



website: www.AffinityRealEstate.com | email: info@affinityrealestate.com | office: 218-237-3333 | fax: 218-237-3377

Affinity
REAL ESTATE INC

\$284,999
MLS 7053455 Residential
39437 County Road 3
Crosslake MN 56442



website: www.AffinityRealEstate.com | email: info@affinityrealestate.com | office: 218-237-3333 | fax:218-237-3377

Affinity
REAL ESTATE INC

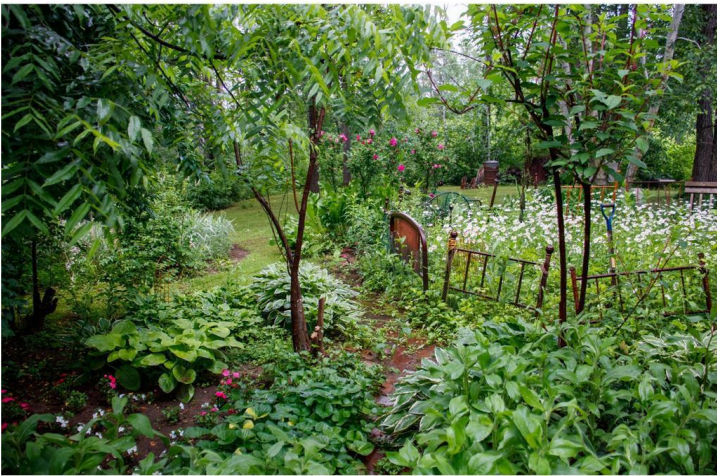
\$284,999
MLS 7053455 Residential
39437 County Road 3
Crosslake MN 56442



website: www.AffinityRealEstate.com | email: info@affinityrealestate.com | office: 218-237-3333 | fax:218-237-3377



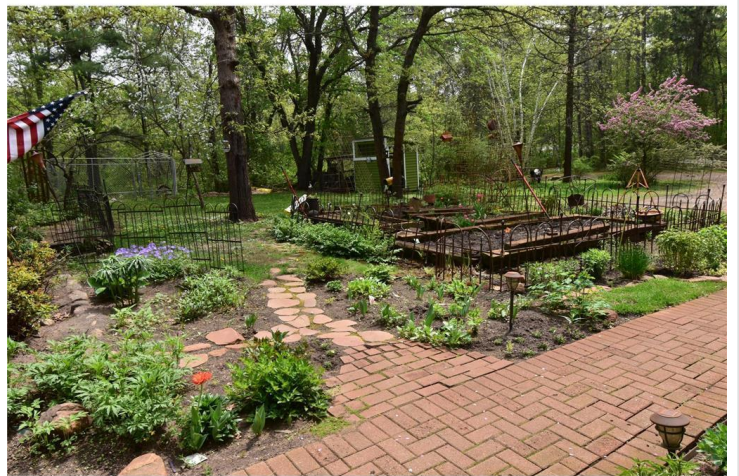
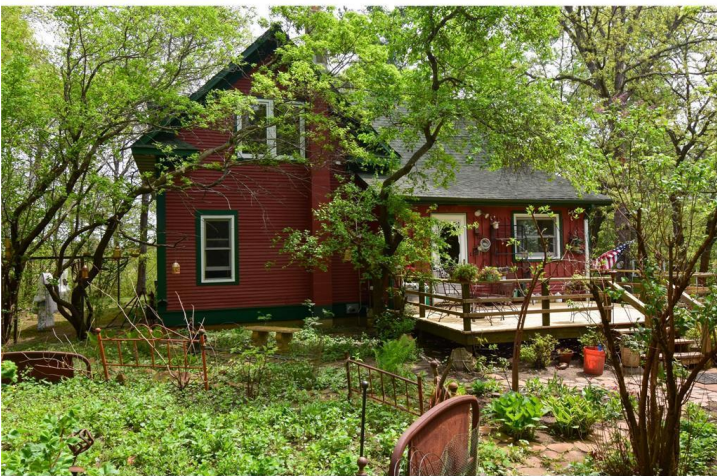
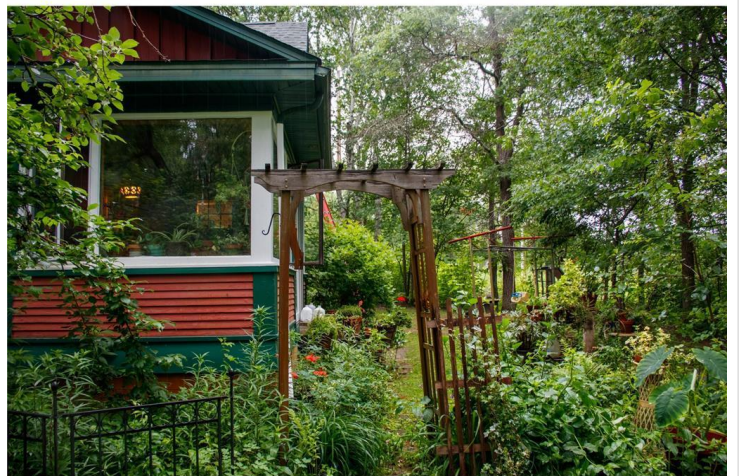
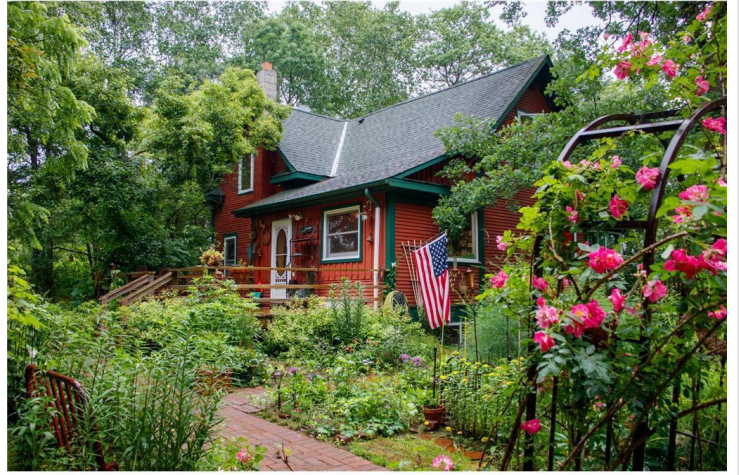
\$284,999
MLS 7053455 Residential
39437 County Road 3
Crosslake MN 56442



website: www.AffinityRealEstate.com | email: info@affinityrealestate.com | office: 218-237-3333 | fax: 218-237-3377

Affinity
REAL ESTATE INC

\$284,999
MLS 7053455 Residential
39437 County Road 3
Crosslake MN 56442



website: www.AffinityRealEstate.com | email: info@affinityrealestate.com | office: 218-237-3333 | fax:218-237-3377



\$284,999
MLS 7053455 Residential
39437 County Road 3
Crosslake MN 56442



website: www.AffinityRealEstate.com | email: info@affinityrealestate.com | office: 218-237-3333 | fax:218-237-3377



\$284,999
MLS 7053455 Residential
39437 County Road 3
Crosslake MN 56442



website: www.AffinityRealEstate.com | email: info@affinityrealestate.com | office: 218-237-3333 | fax:218-237-3377



\$284,999
MLS 7053455 Residential
39437 County Road 3
Crosslake MN 56442