



MLS 7053478 Land

\$49,900

5.02 Acres
Raw Land

25634 Smokey Hollow Drive
Laporte MN 56461

Status: Pending

Description:

5+ acres just south of Bemidji! Level, private, and heavily treed with no overhead power lines. Ideal build site in a quiet, desirable area just minutes from town. Additional 5.09-acre parcel available for \$44,900—see MLS #7054739.

Additional Details:

Lot Acres	5.02
Lot Dimensions	656x330
School District	31
Taxes	\$330
Taxes with Assessments	\$330
Tax Year	2026

Additional Features:

Driving Directions:

From Bemidji, south on Hwy 71 for 6 miles, to east on 470th Street for 1.5 miles, to south on 255th Ave for half mile. Property is on the left (east) side of the road.



Listed By:
218 Real Estate

Affinity Real Estate Inc. participates in the Regional Multiple Listing Service of Minnesota, Inc Broker Reciprocity (sm) program, allowing us to display other broker's listings on our website. All properties are subject to prior sale, change or withdrawal.



Call Affinity Real Estate

218-237-3333

info@affinityrealestate.com



Affinity Real Estate - 600 Park Avenue South - Park Rapids MN 56470



website: www.AffinityRealEstate.com | email: info@affinityrealestate.com | office: 218-237-3333 | fax:218-237-3377



\$49,900
MLS 7053478 Land
25634 Smokey Hollow Drive
Laporte MN 56461



website: www.AffinityRealEstate.com | email: info@affinityrealestate.com | office: 218-237-3333 | fax:218-237-3377



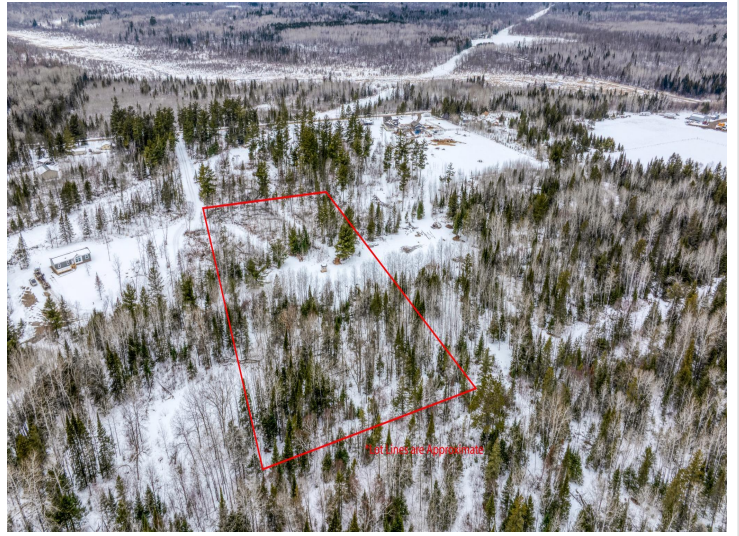
\$49,900
MLS 7053478 Land
25634 Smokey Hollow Drive
Laporte MN 56461



website: www.AffinityRealEstate.com | email: info@affinityrealestate.com | office: 218-237-3333 | fax:218-237-3377

Affinity
REAL ESTATE INC

\$49,900
MLS 7053478 Land
25634 Smokey Hollow Drive
Laporte MN 56461



website: www.AffinityRealEstate.com | email: info@affinityrealestate.com | office: 218-237-3333 | fax:218-237-3377



\$49,900
MLS 7053478 Land
25634 Smokey Hollow Drive
Laporte MN 56461



website: www.AffinityRealEstate.com | email: info@affinityrealestate.com | office: 218-237-3333 | fax:218-237-3377



\$49,900
MLS 7053478 Land
25634 Smokey Hollow Drive
Laporte MN 56461