



MLS 7053481 Residential

**\$299,000**

1,656 sq ft  
3 bedrooms  
2 baths

13110 Meredith Drive  
Baxter MN 56425

Status: Active

**Description:**

Welcome to this charming split level home nestled on 1.43 acres in Baxter. Home offers 3 bedrooms, plus 2 full baths. This property combines comfort, space and privacy in a convenient location close to town and shopping. Step inside to a welcoming foyer complete with spacious closet, leading to a well thought out floor plan that is perfect for everyday living. A large entertainment room provides space to relax or for gatherings with family or friends. The kitchen flows into the dining area, creating inviting space for meals and gatherings. Enjoy the peace and beauty of the surrounding trees from the 12 x 12 deck - perfect for quiet evenings at home. Childs play set will stay. New garage door opener. Perfect privacy can be yours!!

**Additional Details:**

Year Built	1994
Lot Acres	1.43
Lot Dimensions	304x181x299x234
Garage Stalls	2
School District	896
Taxes	\$2,527
Taxes with Assessments	\$2,552
Tax Year	2026

**Additional Features:**

**Basement:** Block **Fuel:** Array **Garage:** 2 **Heat:** Forced Air **Sewer:** City Sewer/Connected **Water:** City Water/Connected **Air Conditioning:** Central Air

**Driving Directions:**

From intersection of highways 210 & 371 go west on 210 to Meredith Drive on right. Turn right , house is second on the right. 13110



Listed By:  
Ashworth Real Estate

Affinity Real Estate Inc. participates in the Regional Multiple Listing Service of Minnesota, Inc Broker Reciprocity (sm) program, allowing us to display other broker's listings on our website. All properties are subject to prior sale, change or withdrawal.



**Call Affinity Real Estate**

**218-237-3333**

**info@affinityrealestate.com**



**Affinity Real Estate - 600 Park Avenue South - Park Rapids MN 56470**



website: [www.AffinityRealEstate.com](http://www.AffinityRealEstate.com) | email: [info@affinityrealestate.com](mailto:info@affinityrealestate.com) | office: 218-237-3333 | fax:218-237-3377



**\$299,000**  
MLS 7053481 Residential  
13110 Meredith Drive  
Baxter MN 56425



website: [www.AffinityRealEstate.com](http://www.AffinityRealEstate.com) | email: [info@affinityrealestate.com](mailto:info@affinityrealestate.com) | office: 218-237-3333 | fax:218-237-3377

**Affinity**  
REAL ESTATE INC

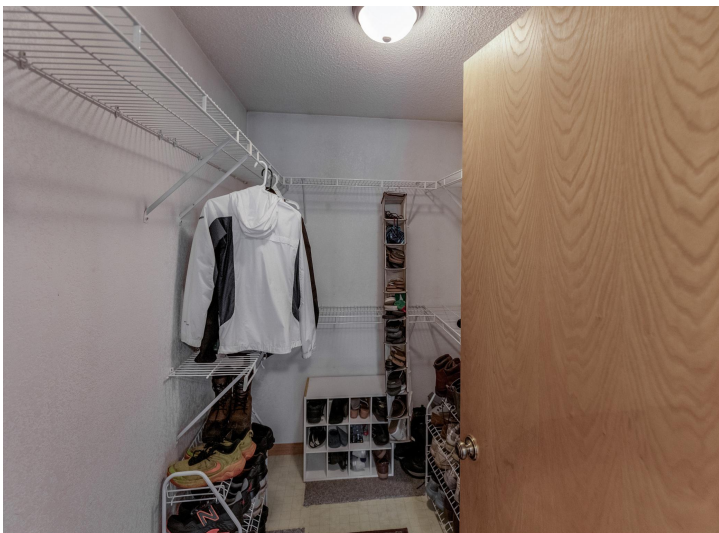
**\$299,000**  
MLS 7053481 Residential  
13110 Meredith Drive  
Baxter MN 56425



website: [www.AffinityRealEstate.com](http://www.AffinityRealEstate.com) | email: [info@affinityrealestate.com](mailto:info@affinityrealestate.com) | office: 218-237-3333 | fax:218-237-3377

**Affinity**  
REAL ESTATE INC

**\$299,000**  
MLS 7053481 Residential  
13110 Meredith Drive  
Baxter MN 56425



website: [www.AffinityRealEstate.com](http://www.AffinityRealEstate.com) | email: [info@affinityrealestate.com](mailto:info@affinityrealestate.com) | office: 218-237-3333 | fax:218-237-3377

**Affinity**  
REAL ESTATE INC

**\$299,000**  
MLS 7053481 Residential  
13110 Meredith Drive  
Baxter MN 56425



website: [www.AffinityRealEstate.com](http://www.AffinityRealEstate.com) | email: [info@affinityrealestate.com](mailto:info@affinityrealestate.com) | office: 218-237-3333 | fax: 218-237-3377

**Affinity**  
REAL ESTATE INC

**\$299,000**  
MLS 7053481 Residential  
13110 Meredith Drive  
Baxter MN 56425