



MLS 7053532 Land

\$159,900

5.36 Acres
Finished Lot(s)

TBD Sunset Valley Road
Nisswa MN 56468

Status: Active

Description:

Hard to find 5.36 acre building site within 2 miles of Nisswa! Lot is mostly level with a nice mix of trees. Paved road access directly off Sunset Valley Road. Fiber Optic, Natural Gas and power are all available to the site. The lines overlaying the aerial photo are an approximation, based on the use of the measuring tools in the Crow Wing County GIS mapping system. This is a great location with close proximity to the City of Nisswa and the many area amenities of the Brainerd Lakes region. Nearby is world class golf, fine dining, numerous lakes, excellent shopping, both alpine and nordic skiing and biking on either the Paul Bunyan Trail or on the 60+ miles of single track mountain biking in the Cuyuna Recreation Area. Live where you play on the first offering of this parcel.

Note: Photos with snow are of actual listed parcel D. Other photos include both the subject parcel as well as parcels on either side.

Additional Details:

Lot Acres	5.36
Lot Dimensions	341.13 x 688.39 x 340.94 x 688.95
School District	896
Taxes	\$48
Taxes with Assessments	\$48
Tax Year	2026

Additional Features:

Driving Directions:

From Nisswa, go east on County Rd 18 to Sunset Valley Road, Turn south to sign on right



Listed By:
Century 21 Brainerd Realty

Affinity Real Estate Inc. participates in the Regional Multiple Listing Service of Minnesota, Inc Broker Reciprocity (sm) program, allowing us to display other broker's listings on our website. All properties are subject to prior sale, change or withdrawal.



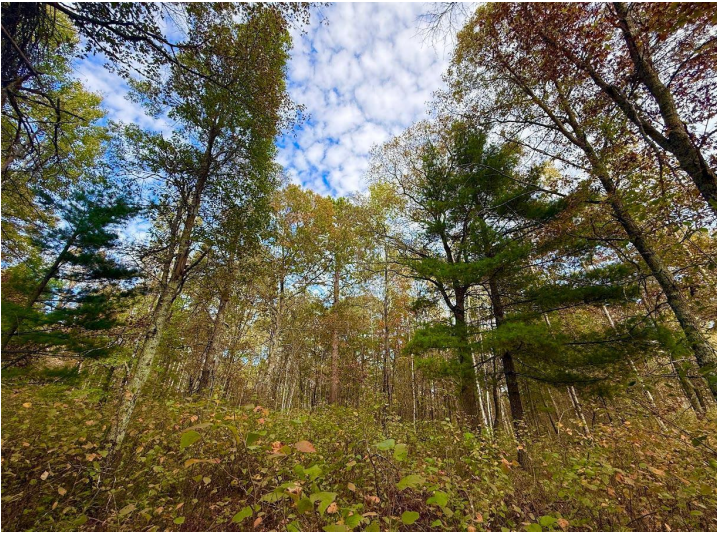
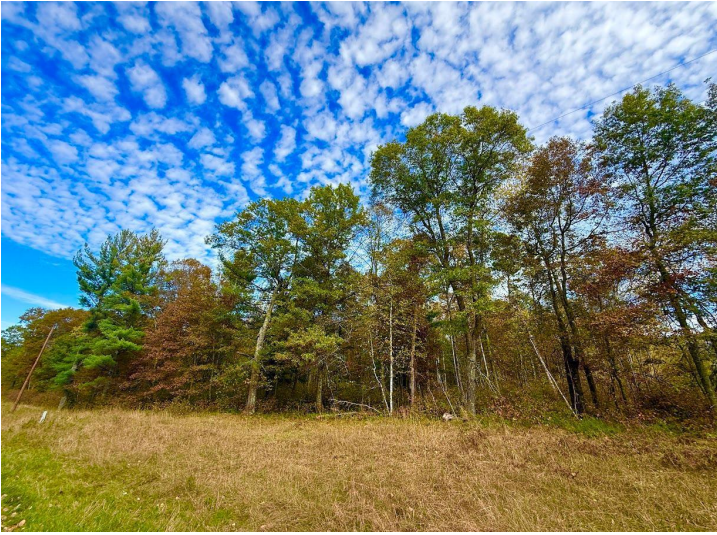
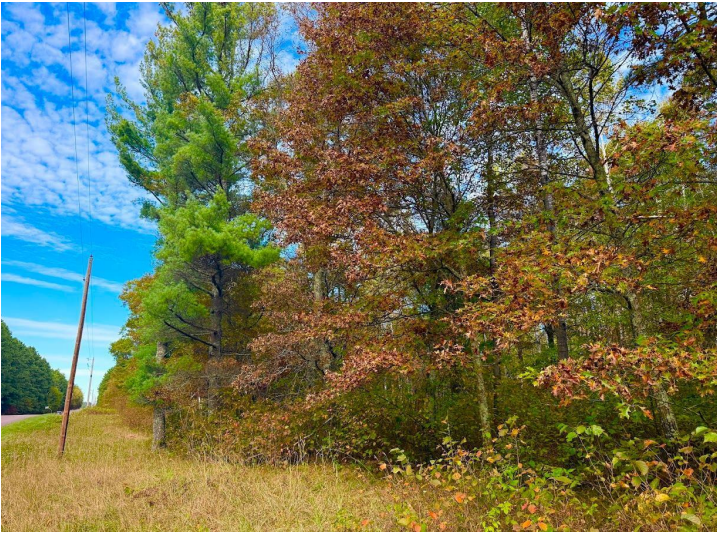
Call Affinity Real Estate

218-237-3333

info@affinityrealestate.com



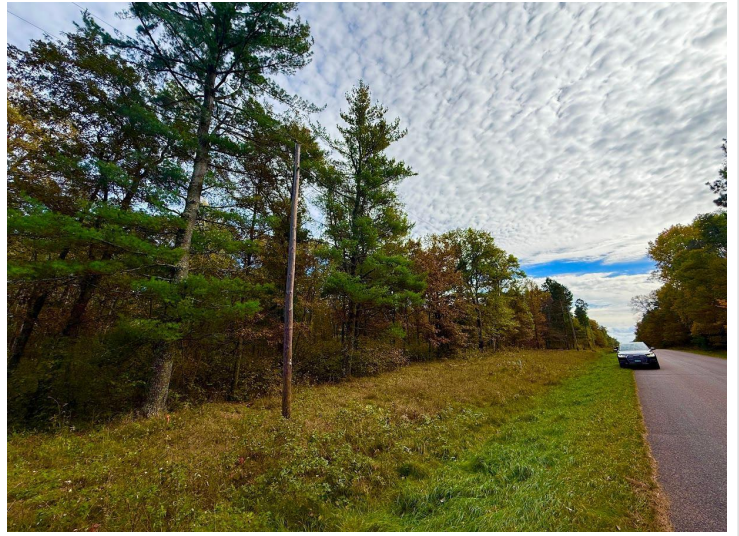
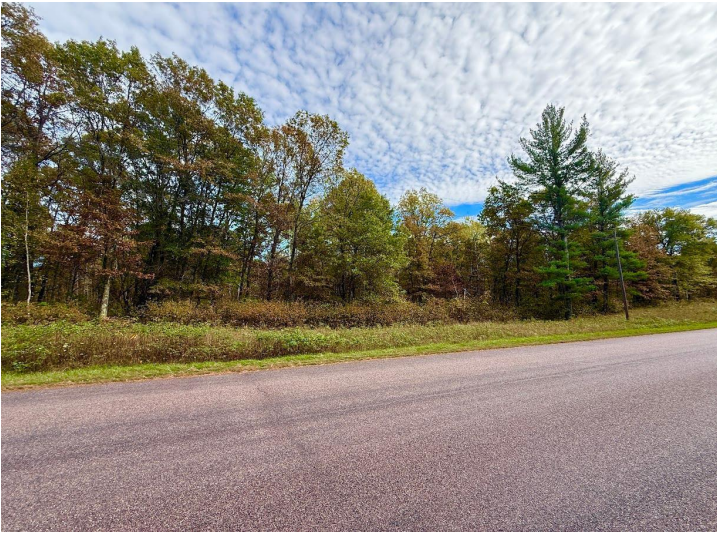
Affinity Real Estate - 600 Park Avenue South - Park Rapids MN 56470



website: www.AffinityRealEstate.com | email: info@affinityrealestate.com | office: 218-237-3333 | fax:218-237-3377



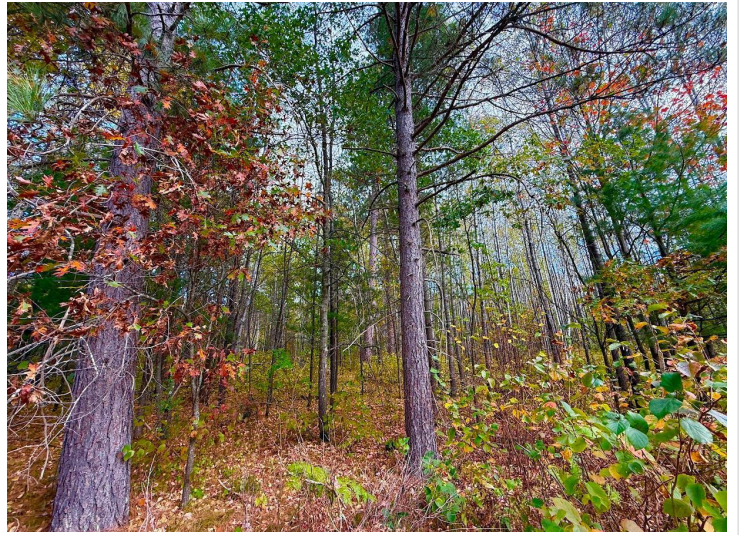
\$159,900
MLS 7053532 Land
TBD Sunset Valley Road
Nisswa MN 56468



website: www.AffinityRealEstate.com | email: info@affinityrealestate.com | office: 218-237-3333 | fax: 218-237-3377



\$159,900
MLS 7053532 Land
TBD Sunset Valley Road
Nisswa MN 56468



website: www.AffinityRealEstate.com | email: info@affinityrealestate.com | office: 218-237-3333 | fax:218-237-3377



\$159,900
MLS 7053532 Land
TBD Sunset Valley Road
Nisswa MN 56468



website: www.AffinityRealEstate.com | email: info@affinityrealestate.com | office: 218-237-3333 | fax:218-237-3377



\$159,900
MLS 7053532 Land
TBD Sunset Valley Road
Nisswa MN 56468



website: www.AffinityRealEstate.com | email: info@affinityrealestate.com | office: 218-237-3333 | fax:218-237-3377



\$159,900
MLS 7053532 Land
TBD Sunset Valley Road
Nisswa MN 56468