



MLS 7053590 Land

**\$325,000**

73 Acres  
Raw Land

TBD County Highway 26  
Rochert MN 56578

Status: Active

**Description:**

This 73± acre property in Becker County is the kind of land hunters look for in Minnesota. It has a great mix of rolling terrain, solid cover, and areas already suited for food plots, giving you a strong setup for deer season, along with excellent bear and grouse hunting opportunities. The rolling hills really make this property stand out. Changes in elevation help create natural travel routes for whitetail, along with good stand locations and hidden access points. That kind of layout makes it easier to hunt different winds and conditions, and it can make a property feel and hunt bigger than it actually is. There are already spots in place for food plots, with room to improve or expand them over time. These areas, combined with the surrounding cover, help hold deer and create more consistent movement across the property. If you're looking for land where you can put in some work and see results, this one has that potential. This is a multi-species property with good potential for whitetail deer, black bear, and ruffed grouse. Whether you're focused on deer season or want a property that offers more variety throughout the fall, this tract gives you options. The property is located approximately 25± miles from Detroit Lakes & Park Rapids, making it convenient and accessible. Numerous lakes are nearby for fishing and recreation, along with state ground for additional hunting opportunities. Tamarac National Wildlife Refuge, Smoky Hills State Forest, ATV and snowmobile trails add to the great recreational opportunities in the area. Overall, this is a solid piece of hunting ground with good habitat, usable terrain, and plenty of potential. It's a manageable size that still gives you room to hunt, improve, and enjoy for years to come! A survey will be needed to confirm the exact acreage and boundaries, so the 73 acres is approximate. Log home on 7± acres w/ numerous outbuildings is available on a separate listing.

**Additional Details:**

Year Built	1977
Lot Acres	73
Lot Dimensions	irregular
School District	1106
Taxes	\$3,738
Taxes with Assessments	\$373
Tax Year	2025

**Additional Features:**



Listed By:  
Whitetail Properties Real Estate

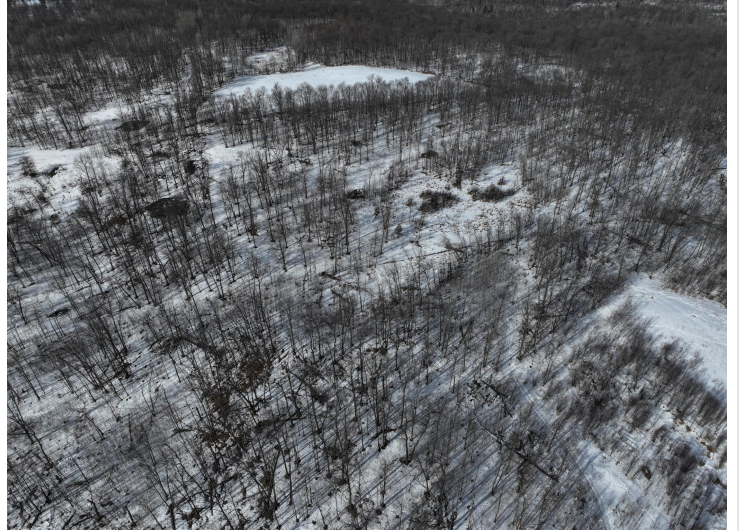
Affinity Real Estate Inc. participates in the Regional Multiple Listing Service of Minnesota, Inc Broker Reciprocity (sm) program, allowing us to display other broker's listings on our website. All properties are subject to prior sale, change or withdrawal.



**Call Affinity Real Estate**  
**218-237-3333**  
**info@affinityrealestate.com**



**Affinity Real Estate - 600 Park Avenue South - Park Rapids MN 56470**



website: [www.AffinityRealEstate.com](http://www.AffinityRealEstate.com) | email: [info@affinityrealestate.com](mailto:info@affinityrealestate.com) | office: 218-237-3333 | fax:218-237-3377



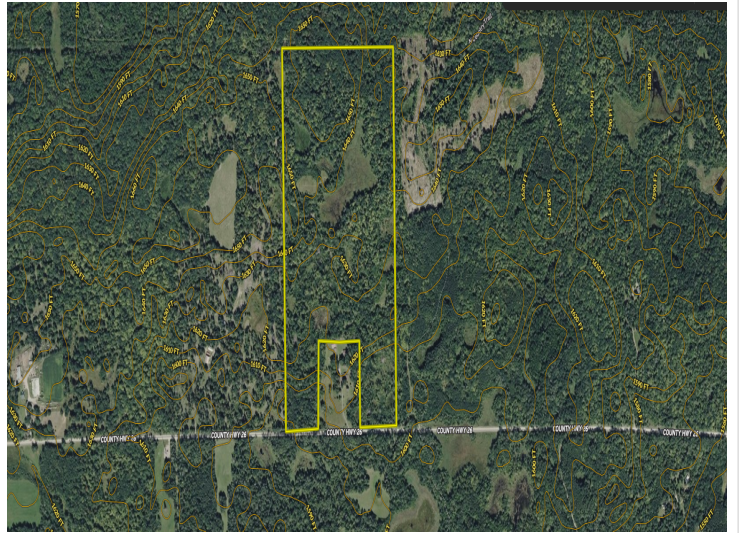
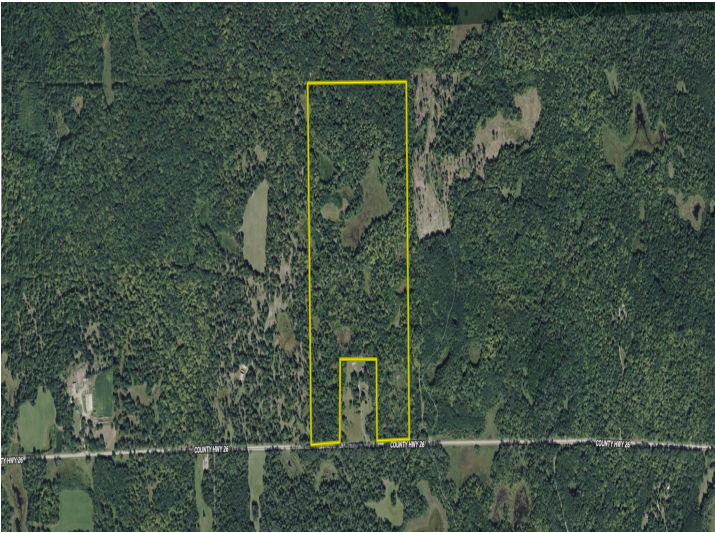
**\$325,000**  
MLS 7053590 Land  
TBD County Highway 26  
Rochert MN 56578



website: [www.AffinityRealEstate.com](http://www.AffinityRealEstate.com) | email: [info@affinityrealestate.com](mailto:info@affinityrealestate.com) | office: 218-237-3333 | fax:218-237-3377



**\$325,000**  
MLS 7053590 Land  
TBD County Highway 26  
Rochert MN 56578



website: [www.AffinityRealEstate.com](http://www.AffinityRealEstate.com) | email: [info@affinityrealestate.com](mailto:info@affinityrealestate.com) | office: 218-237-3333 | fax:218-237-3377



**\$325,000**  
MLS 7053590 Land  
TBD County Highway 26  
Rochert MN 56578