



MLS 7053614 Land

\$39,000

2 Acres
Raw Land

TBD County Hwy 32
Detroit Lakes MN 56501

Status: Pending

Description:

2 acres and only 10 minutes from downtown Detroit Lakes. This property is ready for you to bring your building plans. Whether you're looking for a spot to build your new home, or maybe somewhere for a new shop/shouse this property has so much potential. So close to town but gives you that out-of-town country feel.

Additional Details:

Lot Acres	2
Lot Dimensions	329 x 276 x 355 x 150
School District	1074
Taxes	\$244
Taxes with Assessments	\$244
Tax Year	2025

Additional Features:

Driving Directions:

From Co Hwy 21 take a right onto Co Hwy 32, Go about 1 mile and the property is on your left.



Listed By:
Jack Chivers Realty

Affinity Real Estate Inc. participates in the Regional Multiple Listing Service of Minnesota, Inc Broker Reciprocity (sm) program, allowing us to display other broker's listings on our website. All properties are subject to prior sale, change or withdrawal.



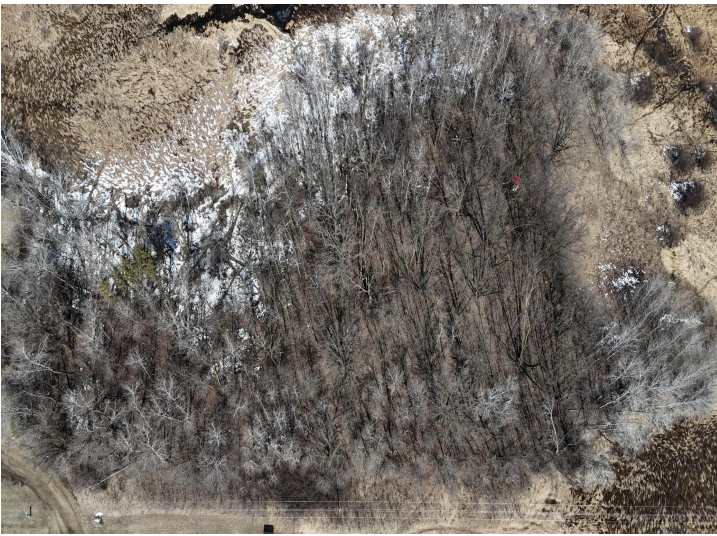
Call Affinity Real Estate

218-237-3333

info@affinityrealestate.com



Affinity Real Estate - 600 Park Avenue South - Park Rapids MN 56470



website: www.AffinityRealEstate.com | email: info@affinityrealestate.com | office: 218-237-3333 | fax:218-237-3377



\$39,000
MLS 7053614 Land
TBD County Hwy 32
Detroit Lakes MN 56501