



MLS 7053625 Land

\$35,000

1.42 Acres
Raw Land

40039 County Rd 17
Browerville MN 56438

Status: Active

Description:

1.42 Acres with 342 feet of Private Shoreline on the East side of Pine Island Lake, West facing for those Terrific Sunsets!

A driveway has roughly been put in there, so you can pull off the road and park.

Lot is not buildable due to setbacks from lake and road.

Pine Island Lake is a private lake, approx 140 acres, has a private access. Good fishing. Can boat, jet ski, pontoon, etc.

An affordable way to enjoy the lake.

Additional Details:

Lot Acres	1.42
Lot Dimensions	325 x 129 x 342 x 216
School District	1062
Taxes	\$330
Taxes with Assessments	\$330
Tax Year	2026

Additional Features:

Driving Directions:

From County Road 26 to South on County Rd 17 to property on East Side of Pine Island Lake



Listed By:
Smart Choice Realty

Affinity Real Estate Inc. participates in the Regional Multiple Listing Service of Minnesota, Inc Broker Reciprocity (sm) program, allowing us to display other broker's listings on our website. All properties are subject to prior sale, change or withdrawal.



Call Affinity Real Estate

218-237-3333

info@affinityrealestate.com



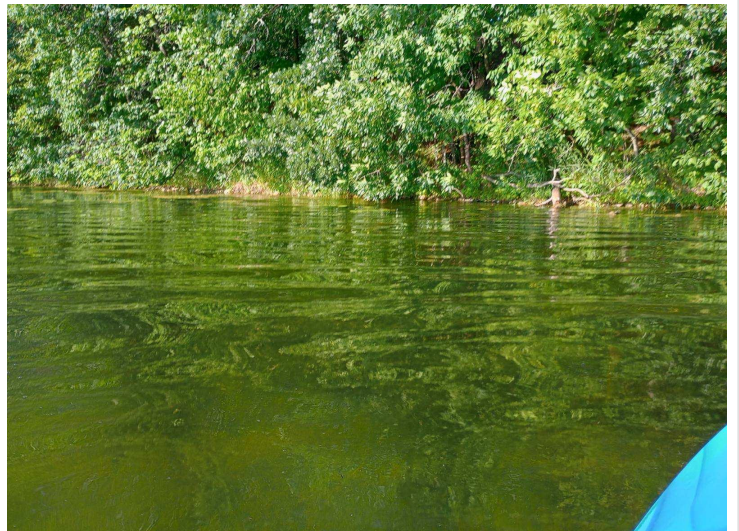
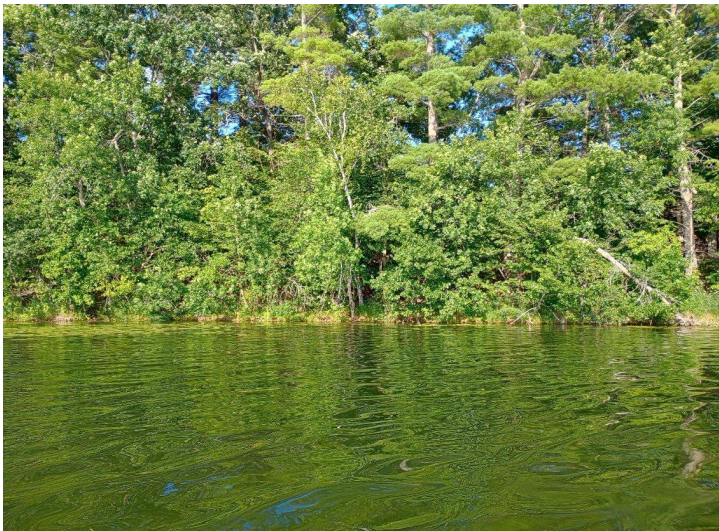
Affinity Real Estate - 600 Park Avenue South - Park Rapids MN 56470



website: www.AffinityRealEstate.com | email: info@affinityrealestate.com | office: 218-237-3333 | fax:218-237-3377



\$35,000
MLS 7053625 Land
40039 County Rd 17
Browerville MN 56438



website: www.AffinityRealEstate.com | email: info@affinityrealestate.com | office: 218-237-3333 | fax:218-237-3377



\$35,000
MLS 7053625 Land
40039 County Rd 17
Browerville MN 56438



website: www.AffinityRealEstate.com | email: info@affinityrealestate.com | office: 218-237-3333 | fax:218-237-3377



\$35,000
MLS 7053625 Land
40039 County Rd 17
Browerville MN 56438



website: www.AffinityRealEstate.com | email: info@affinityrealestate.com | office: 218-237-3333 | fax: 218-237-3377

Affinity
REAL ESTATE INC

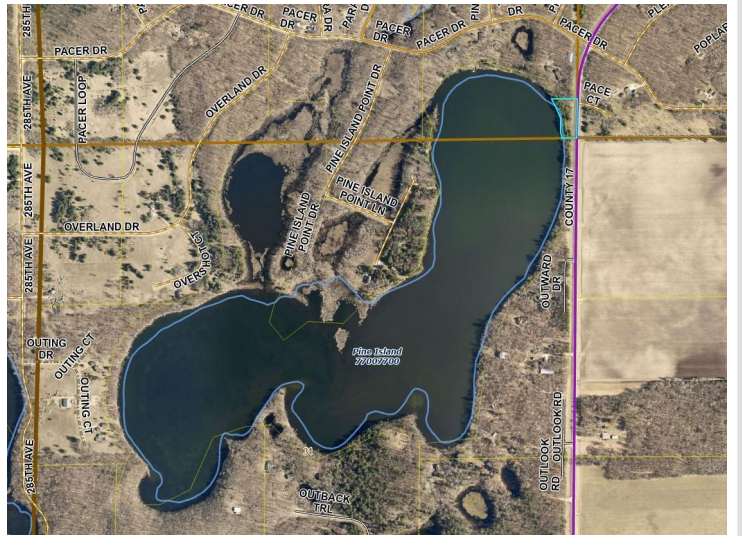
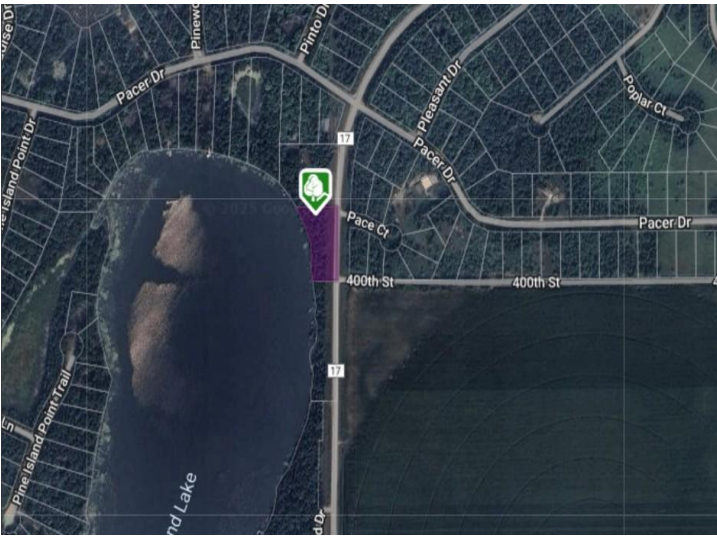
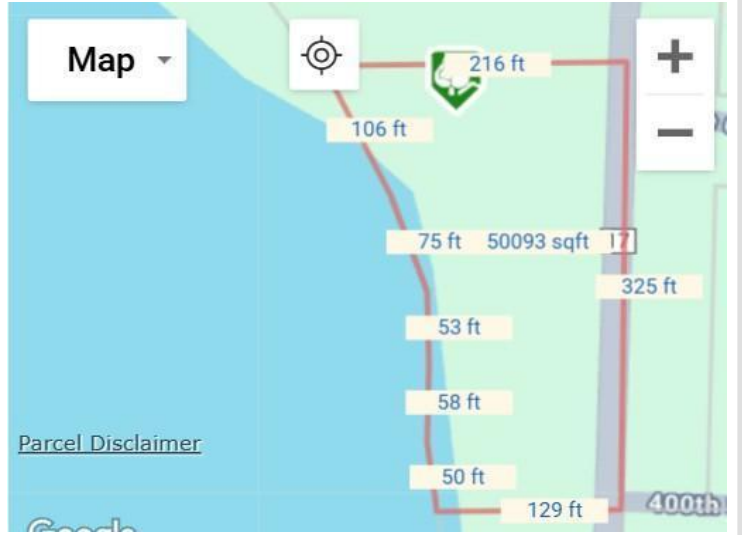
\$35,000
MLS 7053625 Land
40039 County Rd 17
Browerville MN 56438



website: www.AffinityRealEstate.com | email: info@affinityrealestate.com | office: 218-237-3333 | fax:218-237-3377



\$35,000
MLS 7053625 Land
40039 County Rd 17
Browerville MN 56438



website: www.AffinityRealEstate.com | email: info@affinityrealestate.com | office: 218-237-3333 | fax:218-237-3377



\$35,000
 MLS 7053625 Land
 40039 County Rd 17
 Browerville MN 56438