



MLS 7053902 Residential

**\$219,900**

1,484 sq ft  
3 bedrooms  
2 baths

14433 Forest Drive  
Baxter MN 56425

Status: Active

**Description:**

Rare opportunity to own nearly an acre in the heart of Baxter! This 3BR/2BA home sits on a .8-acre lot and is designed for comfortable main-level living. The interior features a primary suite, a functional laundry/mudroom, and an inviting kitchen updated with new countertops in 2025. Relax by the wood-burning fireplace or host summer BBQs on the brand-new front deck (2024). This home is built to last with a metal roof installed in 2018. Outside, you'll find a small fenced portion of the yard ideal for pets, with nearly an acre of total land to enjoy. Located just a short drive from major health care hubs, shopping, and dining, you get the benefit of a large lot with all the city's amenities at your fingertips. All living facilities on one level—schedule your showing today!

**Additional Details:**

Year Built	2000
Lot Acres	0.8
Lot Dimensions	296x240x170x63
School District	896
Taxes	\$1,351
Taxes with Assessments	\$1,376
Tax Year	2026

**Additional Features:**

**Fuel:** Array **Heat:** Forced Air

**Driving Directions:**

Head West from the 210 and Clearwater Road intersection. Follow Clearwater Road until you reach Forest Drive, then take a left. The destination will be on your right-hand side.



Listed By:  
Century 21 Brainerd Realty

Affinity Real Estate Inc. participates in the Regional Multiple Listing Service of Minnesota, Inc Broker Reciprocity (sm) program, allowing us to display other broker's listings on our website. All properties are subject to prior sale, change or withdrawal.



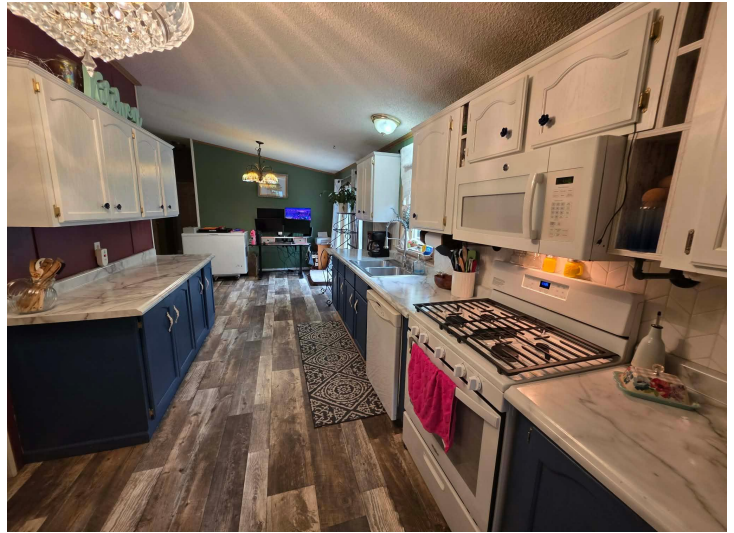
**Call Affinity Real Estate**

**218-237-3333**

**info@affinityrealestate.com**



**Affinity Real Estate - 600 Park Avenue South - Park Rapids MN 56470**



website: [www.AffinityRealEstate.com](http://www.AffinityRealEstate.com) | email: [info@affinityrealestate.com](mailto:info@affinityrealestate.com) | office: 218-237-3333 | fax: 218-237-3377

**Affinity**  
REAL ESTATE INC

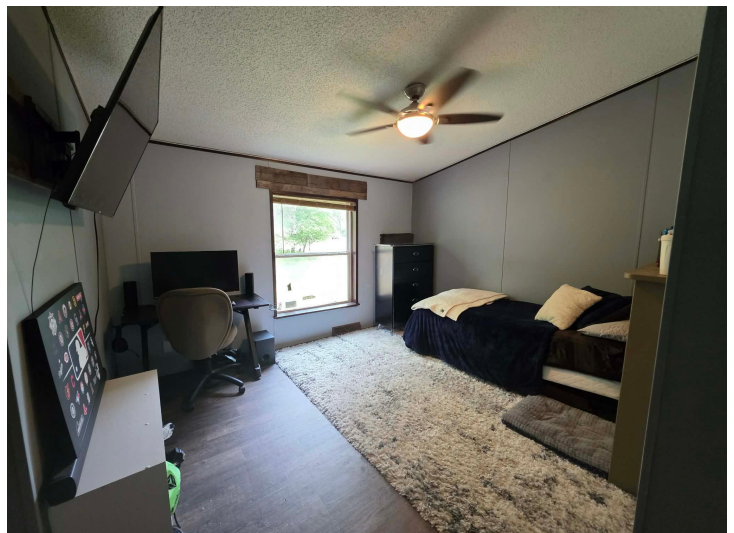
**\$219,900**  
MLS 7053902 Residential  
14433 Forest Drive  
Baxter MN 56425



website: [www.AffinityRealEstate.com](http://www.AffinityRealEstate.com) | email: [info@affinityrealestate.com](mailto:info@affinityrealestate.com) | office: 218-237-3333 | fax:218-237-3377



**\$219,900**  
MLS 7053902 Residential  
14433 Forest Drive  
Baxter MN 56425



website: [www.AffinityRealEstate.com](http://www.AffinityRealEstate.com) | email: [info@affinityrealestate.com](mailto:info@affinityrealestate.com) | office: 218-237-3333 | fax:218-237-3377

**Affinity**  
REAL ESTATE INC

**\$219,900**  
MLS 7053902 Residential  
14433 Forest Drive  
Baxter MN 56425



website: [www.AffinityRealEstate.com](http://www.AffinityRealEstate.com) | email: [info@affinityrealestate.com](mailto:info@affinityrealestate.com) | office: 218-237-3333 | fax:218-237-3377

**Affinity**  
REAL ESTATE INC

**\$219,900**  
MLS 7053902 Residential  
14433 Forest Drive  
Baxter MN 56425