



MLS 7053944 Residential

**\$649,900**

3,100 sq ft  
2 bedrooms  
3 baths

17999 Ivy Drive  
Park Rapids MN 56470

Status: Coming Soon

**Description:**

Pickerel Lake Retreat!

Tucked on a quiet private drive, this beautifully maintained lake home offers 150' of south-facing sandy shoreline surrounded by mature pines. The open-concept main level features a spacious kitchen with center island, double wall ovens, cooktop, and lake views, flowing into the dining/living area with access to a wraparound deck and remote awning. Cozy Wilkening stone fireplace adds Northwoods charm.

Main level includes a large primary suite with French doors, 3/4 bath with soaking tub, walk-in closet, plus half bath and laundry. The finished lower level offers a family room with walk-out patio, additional bedroom, 3/4 bath, and great storage. In-floor heat, heat pump, and Steffes furnace provide year-round comfort.

Bonus 2BR bunkhouse (no plumbing) with great room and deck access—perfect for guests. Large 40x45 detached building with lean-to, plus shed/dog kennel and woodshed. Dock, kayaks, paddle boards, paddle boat, and 12' fishing boat w/motor included.


Private setting, turnkey amenities, and everything you need to enjoy lake life on Pickerel Lake!

**Additional Details:**

Year Built	2005
Lot Acres	1.4
Lot Dimensions	150 x 478 x 133 x 397
Garage Stalls	4
School District	1384
Taxes	\$2,819
Taxes with Assessments	\$3,064
Tax Year	2026

**Additional Features:**

**Fuel:** Array **Heat:** Forced Air, Fireplace(s), Heat Pump, In-Floor Heating

 Listed By:  
Affinity Real Estate Inc.  
From Park Rapids take Highway 34 East to CR 4 and turn L, proceed 2.3 miles and turn left onto 270th Street. Continue 1 mile, turn left and proceed .4 mile to Ivy Drive and turn R. Property is in .5 mile by road, marked side.

Affinity Real Estate Inc. participates in the Regional Multiple Listing Service of Minnesota, Inc Broker Reciprocity (sm) program, allowing us to display other broker's listings on our website. All properties are subject to prior sale, change or withdrawal.



**Call Affinity Real Estate**

**218-237-3333**

**info@affinityrealestate.com**



**Affinity Real Estate - 600 Park Avenue South - Park Rapids MN 56470**



website: [www.AffinityRealEstate.com](http://www.AffinityRealEstate.com) | email: [info@affinityrealestate.com](mailto:info@affinityrealestate.com) | office: 218-237-3333 | fax:218-237-3377



**\$649,900**  
MLS 7053944 Residential  
17999 Ivy Drive  
Park Rapids MN 56470



website: [www.AffinityRealEstate.com](http://www.AffinityRealEstate.com) | email: [info@affinityrealestate.com](mailto:info@affinityrealestate.com) | office: 218-237-3333 | fax:218-237-3377

**Affinity**  
REAL ESTATE INC

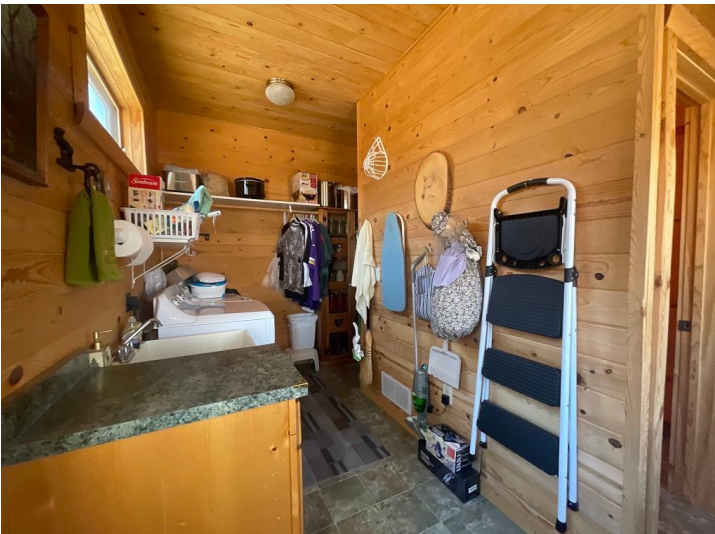
**\$649,900**  
MLS 7053944 Residential  
17999 Ivy Drive  
Park Rapids MN 56470



website: [www.AffinityRealEstate.com](http://www.AffinityRealEstate.com) | email: [info@affinityrealestate.com](mailto:info@affinityrealestate.com) | office: 218-237-3333 | fax: 218-237-3377

**Affinity**  
REAL ESTATE INC

**\$649,900**  
MLS 7053944 Residential  
17999 Ivy Drive  
Park Rapids MN 56470



website: [www.AffinityRealEstate.com](http://www.AffinityRealEstate.com) | email: [info@affinityrealestate.com](mailto:info@affinityrealestate.com) | office: 218-237-3333 | fax:218-237-3377

**Affinity**  
REAL ESTATE INC

**\$649,900**  
MLS 7053944 Residential  
17999 Ivy Drive  
Park Rapids MN 56470



website: [www.AffinityRealEstate.com](http://www.AffinityRealEstate.com) | email: [info@affinityrealestate.com](mailto:info@affinityrealestate.com) | office: 218-237-3333 | fax:218-237-3377



**\$649,900**  
MLS 7053944 Residential  
17999 Ivy Drive  
Park Rapids MN 56470



website: [www.AffinityRealEstate.com](http://www.AffinityRealEstate.com) | email: [info@affinityrealestate.com](mailto:info@affinityrealestate.com) | office: 218-237-3333 | fax:218-237-3377

**Affinity**  
REAL ESTATE INC

**\$649,900**  
MLS 7053944 Residential  
17999 Ivy Drive  
Park Rapids MN 56470



website: [www.AffinityRealEstate.com](http://www.AffinityRealEstate.com) | email: [info@affinityrealestate.com](mailto:info@affinityrealestate.com) | office: 218-237-3333 | fax:218-237-3377

**Affinity**  
REAL ESTATE INC

**\$649,900**  
MLS 7053944 Residential  
17999 Ivy Drive  
Park Rapids MN 56470



website: [www.AffinityRealEstate.com](http://www.AffinityRealEstate.com) | email: [info@affinityrealestate.com](mailto:info@affinityrealestate.com) | office: 218-237-3333 | fax:218-237-3377

**Affinity**  
REAL ESTATE INC

**\$649,900**  
MLS 7053944 Residential  
17999 Ivy Drive  
Park Rapids MN 56470



website: [www.AffinityRealEstate.com](http://www.AffinityRealEstate.com) | email: [info@affinityrealestate.com](mailto:info@affinityrealestate.com) | office: 218-237-3333 | fax: 218-237-3377

**Affinity**  
REAL ESTATE INC

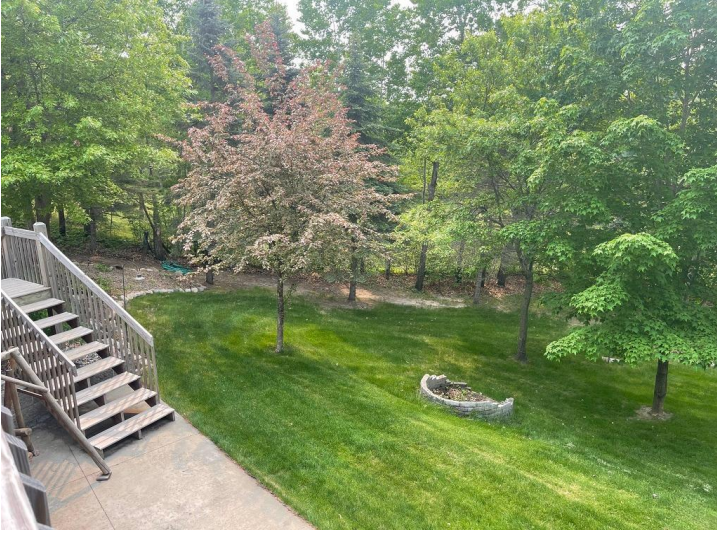
**\$649,900**  
MLS 7053944 Residential  
17999 Ivy Drive  
Park Rapids MN 56470



website: [www.AffinityRealEstate.com](http://www.AffinityRealEstate.com) | email: [info@affinityrealestate.com](mailto:info@affinityrealestate.com) | office: 218-237-3333 | fax:218-237-3377



**\$649,900**  
MLS 7053944 Residential  
17999 Ivy Drive  
Park Rapids MN 56470



website: [www.AffinityRealEstate.com](http://www.AffinityRealEstate.com) | email: [info@affinityrealestate.com](mailto:info@affinityrealestate.com) | office: 218-237-3333 | fax: 218-237-3377

**Affinity**  
REAL ESTATE INC

**\$649,900**  
MLS 7053944 Residential  
17999 Ivy Drive  
Park Rapids MN 56470



website: [www.AffinityRealEstate.com](http://www.AffinityRealEstate.com) | email: [info@affinityrealestate.com](mailto:info@affinityrealestate.com) | office: 218-237-3333 | fax: 218-237-3377



**\$649,900**  
 MLS 7053944 Residential  
 17999 Ivy Drive  
 Park Rapids MN 56470