



MLS 7054068 Residential

**\$349,000**

616 sq ft  
2 bedrooms  
1 baths

21440 County 18  
Nevis MN 56467

Status: Coming Soon

**Description:**

Boulder Lake cabin ready for a new owner to start making memories this summer. Featuring 165 feet of hard-bottom lake frontage, this property offers excellent swimming right off the dock. The well-maintained cabin includes metal siding, vinyl windows, and a newer roof, providing a low-maintenance exterior. Inside, you'll find two bedrooms, one bathroom, a kitchen and living room with beautiful views overlooking the lake. Situated on just over one acre, the lot offers plenty of space for outdoor activities, yard games, and entertaining. Enjoy stunning views from the lakeside deck. Nicely located between Park Rapids and Nevis, giving you access to all the nearby amenities. This property is being offered turn-key, making it easy to move in and start enjoying lake life right away.

**Additional Details:**

Year Built	1961
Lot Acres	1.07
Lot Dimensions	116x231x165x212
School District	1380
Taxes	\$1,749
Taxes with Assessments	\$1,994
Tax Year	2026

**Additional Features:**

**Fuel:** Array **Heat:** Other

**Driving Directions:**

From 71/34 in Park Rapids, Head East on HWY 34 for 5.2 miles to Dorset Corner and take a left onto 226, follow for 2 miles to a right onto County 18, continue 1.5 miles to property on Left.



Listed By:  
Wolff & Simon Real Estate

Affinity Real Estate Inc. participates in the Regional Multiple Listing Service of Minnesota, Inc Broker Reciprocity (sm) program, allowing us to display other broker's listings on our website. All properties are subject to prior sale, change or withdrawal.



**Call Affinity Real Estate**

**218-237-3333**

**info@affinityrealestate.com**



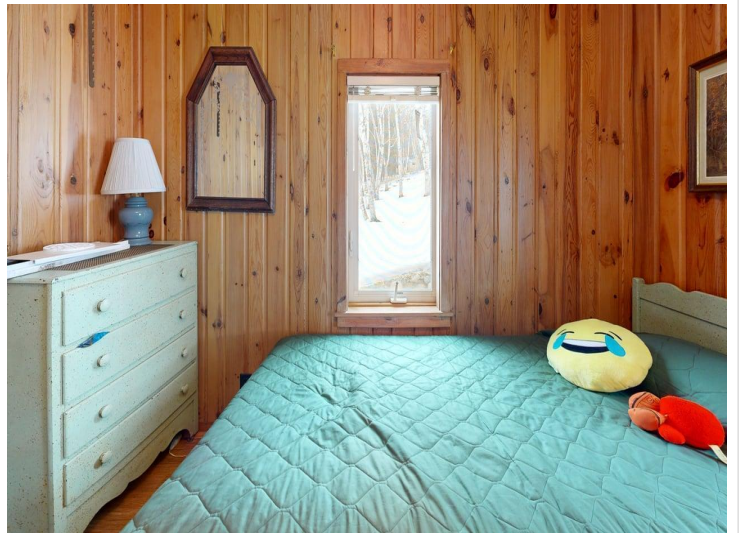
**Affinity Real Estate - 600 Park Avenue South - Park Rapids MN 56470**



website: [www.AffinityRealEstate.com](http://www.AffinityRealEstate.com) | email: [info@affinityrealestate.com](mailto:info@affinityrealestate.com) | office: 218-237-3333 | fax:218-237-3377

**Affinity**  
REAL ESTATE INC

**\$349,000**  
MLS 7054068 Residential  
21440 County 18  
Nevis MN 56467



website: [www.AffinityRealEstate.com](http://www.AffinityRealEstate.com) | email: [info@affinityrealestate.com](mailto:info@affinityrealestate.com) | office: 218-237-3333 | fax:218-237-3377

**Affinity**  
REAL ESTATE INC

**\$349,000**  
MLS 7054068 Residential  
21440 County 18  
Nevis MN 56467



website: [www.AffinityRealEstate.com](http://www.AffinityRealEstate.com) | email: [info@affinityrealestate.com](mailto:info@affinityrealestate.com) | office: 218-237-3333 | fax:218-237-3377



**\$349,000**  
MLS 7054068 Residential  
21440 County 18  
Nevis MN 56467



website: [www.AffinityRealEstate.com](http://www.AffinityRealEstate.com) | email: [info@affinityrealestate.com](mailto:info@affinityrealestate.com) | office: 218-237-3333 | fax: 218-237-3377



**\$349,000**  
 MLS 7054068 Residential  
 21440 County 18  
 Nevis MN 56467