



MLS 7054152 Residential

\$449,900

2,214 sq ft
4 bedrooms
2 baths

10463 Moe Hall Road
Garfield MN 56332

Status: Active

Description:

Seated on just under 6 acres this country charmer is sure to please with the authentic log look and a warm cozy feel. It is not too big and not too small featuring four bedrooms, two bathrooms, main floor living, two stall attached garage, and two additional outbuildings. The basement is fully finished and offers a walk-out with two bedrooms, bathroom and patio. The main floor features an updated kitchen, solid surface countertops, island seating, and a living room adorned with windows boasting of natural light, accented with full log beams. Additional living space is available in the loft, offering a seating area, and an additional bedroom. The layout is comfy and cozy and offers all the amenities you could want in a modern home. Two large outbuildings provide lots of room for storage and hobbies alike. This property invites abundant wildlife including deer, turkeys, and waterfowl, perfect for those looking to enjoy their own slice of nature. Looking to get in the country, want a little acreage yourself? Looking to have chickens, a garden, or shop? Look no further because the perfect place has come available.

Additional Details:

Year Built	1980
Lot Acres	5.57
Lot Dimensions	770x330x770x330
Garage Stalls	2
School District	1015
Taxes	\$2,678
Taxes with Assessments	\$2,678
Tax Year	2026

Additional Features:

Fuel: Array **Heat:** Baseboard, Forced Air

Driving Directions:

From Alexandria: Take Third Ave W. Keep straight onto Co Rd 82. Turn Left onto Co Rd 8. Turn Left onto Mo Hall Rd NW. The property will be on your right.



Listed By:
Real Estate by Jo, LLC

Affinity Real Estate Inc. participates in the Regional Multiple Listing Service of Minnesota, Inc Broker Reciprocity (sm) program, allowing us to display other broker's listings on our website. All properties are subject to prior sale, change or withdrawal.



Call Affinity Real Estate

218-237-3333

info@affinityrealestate.com



Affinity Real Estate - 600 Park Avenue South - Park Rapids MN 56470



website: www.AffinityRealEstate.com | email: info@affinityrealestate.com | office: 218-237-3333 | fax: 218-237-3377

Affinity
REAL ESTATE INC

\$449,900
MLS 7054152 Residential
10463 Moe Hall Road
Garfield MN 56332



website: www.AffinityRealEstate.com | email: info@affinityrealestate.com | office: 218-237-3333 | fax: 218-237-3377

Affinity
REAL ESTATE INC

\$449,900
MLS 7054152 Residential
10463 Moe Hall Road
Garfield MN 56332



website: www.AffinityRealEstate.com | email: info@affinityrealestate.com | office: 218-237-3333 | fax: 218-237-3377

Affinity
REAL ESTATE INC

\$449,900
MLS 7054152 Residential
10463 Moe Hall Road
Garfield MN 56332



website: www.AffinityRealEstate.com | email: info@affinityrealestate.com | office: 218-237-3333 | fax: 218-237-3377

Affinity
REAL ESTATE INC

\$449,900
MLS 7054152 Residential
10463 Moe Hall Road
Garfield MN 56332



website: www.AffinityRealEstate.com | email: info@affinityrealestate.com | office: 218-237-3333 | fax:218-237-3377

Affinity
REAL ESTATE INC

\$449,900
MLS 7054152 Residential
10463 Moe Hall Road
Garfield MN 56332



website: www.AffinityRealEstate.com | email: info@affinityrealestate.com | office: 218-237-3333 | fax: 218-237-3377

Affinity
REAL ESTATE INC

\$449,900
MLS 7054152 Residential
10463 Moe Hall Road
Garfield MN 56332



website: www.AffinityRealEstate.com | email: info@affinityrealestate.com | office: 218-237-3333 | fax:218-237-3377

Affinity
REAL ESTATE INC

\$449,900
MLS 7054152 Residential
10463 Moe Hall Road
Garfield MN 56332



website: www.AffinityRealEstate.com | email: info@affinityrealestate.com | office: 218-237-3333 | fax:218-237-3377

Affinity
REAL ESTATE INC

\$449,900
MLS 7054152 Residential
10463 Moe Hall Road
Garfield MN 56332



website: www.AffinityRealEstate.com | email: info@affinityrealestate.com | office: 218-237-3333 | fax:218-237-3377



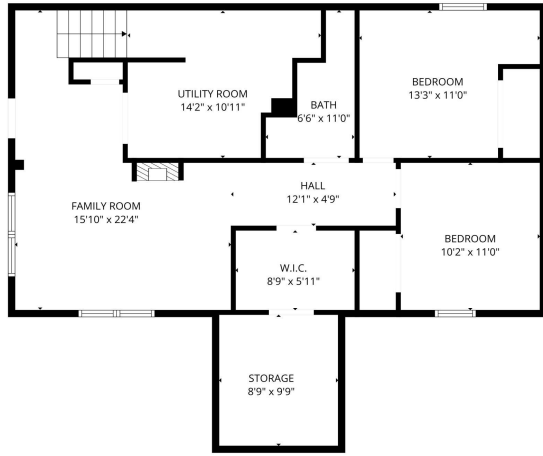
\$449,900
MLS 7054152 Residential
10463 Moe Hall Road
Garfield MN 56332



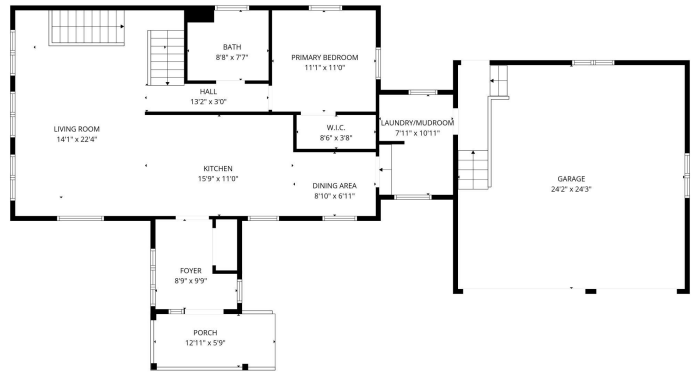
website: www.AffinityRealEstate.com | email: info@affinityrealestate.com | office: 218-237-3333 | fax:218-237-3377

Affinity
REAL ESTATE INC

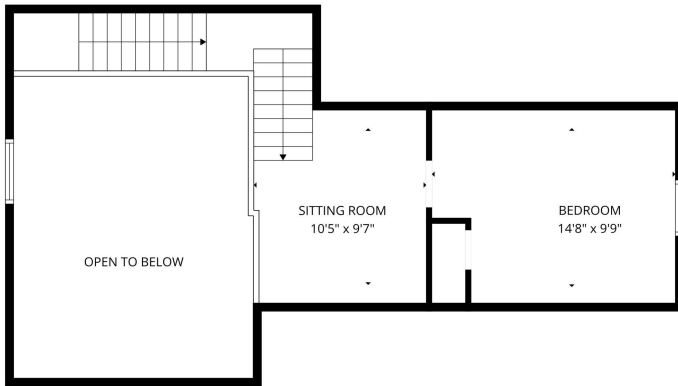
\$449,900
MLS 7054152 Residential
10463 Moe Hall Road
Garfield MN 56332



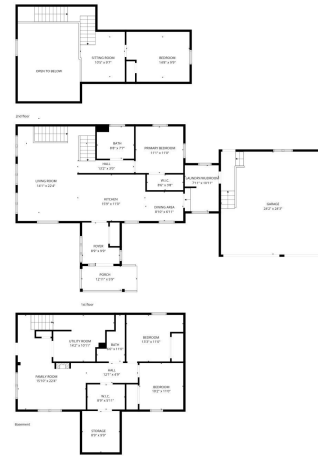
FLOOR PLAN CREATED BY CUBICASA APP. MEASUREMENTS DEEMED HIGHLY RELIABLE BUT NOT GUARANTEED.



FLOOR PLAN CREATED BY CUBICASA APP. MEASUREMENTS DEEMED HIGHLY RELIABLE BUT NOT GUARANTEED.



FLOOR PLAN CREATED BY CUBICASA APP. MEASUREMENTS DEEMED HIGHLY RELIABLE BUT NOT GUARANTEED.



FLOOR PLAN CREATED BY CUBICASA APP. MEASUREMENTS DEEMED HIGHLY RELIABLE BUT NOT GUARANTEED.

website: www.AffinityRealEstate.com | email: info@affinityrealestate.com | office: 218-237-3333 | fax: 218-237-3377



\$449,900
 MLS 7054152 Residential
 10463 Moe Hall Road
 Garfield MN 56332