



MLS 7054212 Residential

\$289,900

2,808 sq ft
4 bedrooms
3 baths

15919 Discovery Circle
Park Rapids MN 56470

Status: Coming Soon

Description:

This well-cared-for 4-bedroom, 3-bath home offers a comfortable layout with plenty of space to spread out. The main level features a bright and open kitchen, dining, and living area that flows nicely for both daily living and gatherings. Downstairs, the fully finished lower level offers a large family room, a convenient kitchenette, and ample storage—ideal for guests, hobbies, or extra living space. You'll appreciate the many recent updates, including newer flooring and refreshed bathrooms. Outside, the property continues to impress with an attached triple garage and a detached heated 12x20 shed with a lean-to—perfect for all your storage and workspace needs. With maintenance-free steel siding and roofing, a blacktop driveway, and city utilities, this home is designed for easy living. Located on a corner lot in a great neighborhood, the backyard is fully enclosed with a privacy fence, offering a nice space to relax or entertain. A solid home in a desirable location—worth a closer look.

Additional Details:

Year Built	1964
Lot Acres	0.46
Lot Dimensions	100x200
Garage Stalls	3
School District	1384
Taxes	\$3,510
Taxes with Assessments	\$3,510
Tax Year	2025

Additional Features:

Basement: Egress Window(s), Finished, Full **Fuel:** Array **Garage:** 3 **Heat:** Boiler, Hot Water **Sewer:** City Sewer/Connected **Water:** City Water/Connected **Air Conditioning:** Ductless Mini-Split

Driving Directions:

From 34/71 in Park Rapids, East on 34 to a right on Henrietta Ave S. to a left on Discovery Circle to property on the corner.



Listed By:
Wolff & Simon Real Estate

Affinity Real Estate Inc. participates in the Regional Multiple Listing Service of Minnesota, Inc Broker Reciprocity (sm) program, allowing us to display other broker's listings on our website. All properties are subject to prior sale, change or withdrawal.



Call Affinity Real Estate

218-237-3333

info@affinityrealestate.com



Affinity Real Estate - 600 Park Avenue South - Park Rapids MN 56470



website: www.AffinityRealEstate.com | email: info@affinityrealestate.com | office: 218-237-3333 | fax: 218-237-3377

Affinity
REAL ESTATE INC

\$289,900
MLS 7054212 Residential
15919 Discovery Circle
Park Rapids MN 56470



website: www.AffinityRealEstate.com | email: info@affinityrealestate.com | office: 218-237-3333 | fax:218-237-3377

Affinity
REAL ESTATE INC

\$289,900
MLS 7054212 Residential
15919 Discovery Circle
Park Rapids MN 56470



website: www.AffinityRealEstate.com | email: info@affinityrealestate.com | office: 218-237-3333 | fax: 218-237-3377

Affinity
REAL ESTATE INC

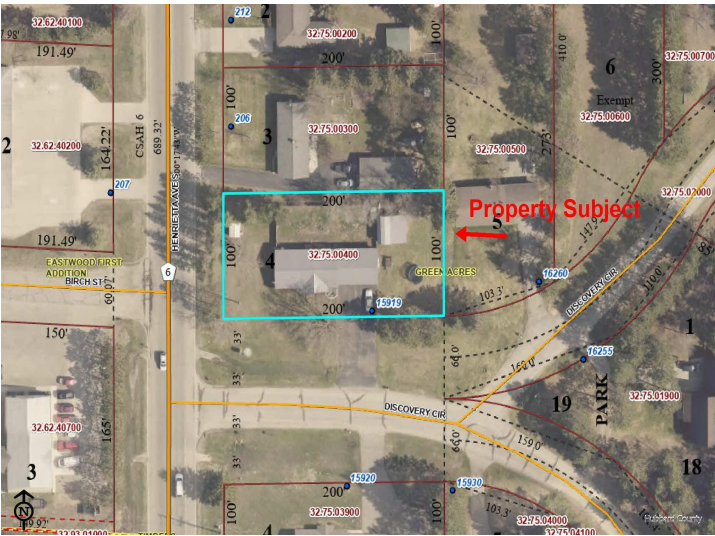
\$289,900
MLS 7054212 Residential
15919 Discovery Circle
Park Rapids MN 56470



website: www.AffinityRealEstate.com | email: info@affinityrealestate.com | office: 218-237-3333 | fax:218-237-3377

Affinity
REAL ESTATE INC

\$289,900
MLS 7054212 Residential
15919 Discovery Circle
Park Rapids MN 56470



website: www.AffinityRealEstate.com | email: info@affinityrealestate.com | office: 218-237-3333 | fax:218-237-3377



\$289,900
MLS 7054212 Residential
15919 Discovery Circle
Park Rapids MN 56470