



MLS 7054250 Residential

**\$624,900**

4,020 sq ft  
4 bedrooms  
3 baths

13520 Lake Sallie Drive  
Detroit Lakes MN 56501

Status: Active

**Description:**

Beautiful country property with a fully renovated home in the heart of lakes country!! This updated home offers you all the amenities of modern country living right near the city of Detroit Lakes. Main floor living plus the basement offer lots of space and the recent addition to the home added a vaulted great room, loft space, 3-season porch, and wrap-around front deck. The large yard offers an amazing outdoor space only a short drive from numerous lakes. Significant updates, new appliances, multiple outbuildings, tons of wildlife around the area, and room to roam. Come see this amazing country home and all that it has to offer!!

**Additional Details:**

Year Built	1986
Lot Acres	5
Lot Dimensions	5 acres
Garage Stalls	2
School District	22
Taxes	\$3,245
Taxes with Assessments	\$3,330
Tax Year	2026

**Additional Features:**

**Basement:** Wood **Fuel:** Natural Gas **Garage:** 2 **Heat:** Forced Air **Sewer:** Tank with Drainage Field **Water:** 4-Inch Submersible **Air Conditioning:** Wall Unit(s)

**Driving Directions:**

West side of Lake Sallie on W. Sallie Drive.



Listed By:  
Sky Lodge Properties MN, LLC.

Affinity Real Estate Inc. participates in the Regional Multiple Listing Service of Minnesota, Inc Broker Reciprocity (sm) program, allowing us to display other broker's listings on our website. All properties are subject to prior sale, change or withdrawal.



**Call Affinity Real Estate**

**218-237-3333**

**info@affinityrealestate.com**



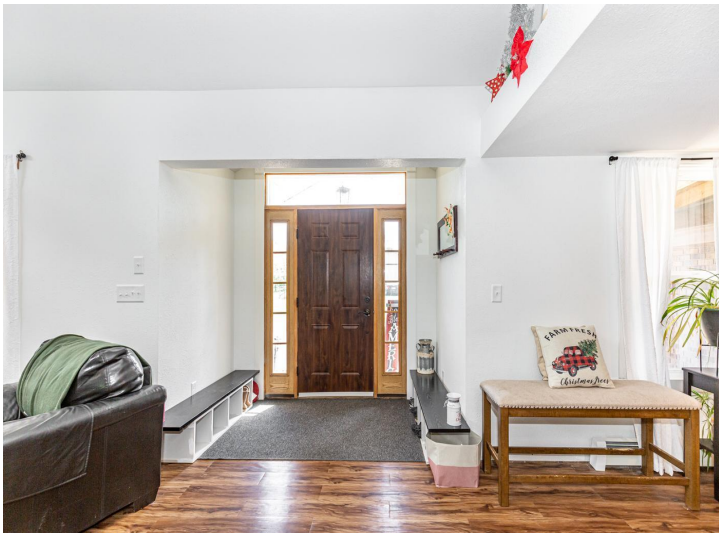
**Affinity Real Estate - 600 Park Avenue South - Park Rapids MN 56470**



website: [www.AffinityRealEstate.com](http://www.AffinityRealEstate.com) | email: [info@affinityrealestate.com](mailto:info@affinityrealestate.com) | office: 218-237-3333 | fax:218-237-3377



**\$624,900**  
MLS 7054250 Residential  
13520 Lake Sallie Drive  
Detroit Lakes MN 56501



website: [www.AffinityRealEstate.com](http://www.AffinityRealEstate.com) | email: [info@affinityrealestate.com](mailto:info@affinityrealestate.com) | office: 218-237-3333 | fax: 218-237-3377

**Affinity**  
REAL ESTATE INC

**\$624,900**  
MLS 7054250 Residential  
13520 Lake Sallie Drive  
Detroit Lakes MN 56501



website: [www.AffinityRealEstate.com](http://www.AffinityRealEstate.com) | email: [info@affinityrealestate.com](mailto:info@affinityrealestate.com) | office: 218-237-3333 | fax: 218-237-3377

**Affinity**  
REAL ESTATE INC

**\$624,900**  
MLS 7054250 Residential  
13520 Lake Sallie Drive  
Detroit Lakes MN 56501



website: [www.AffinityRealEstate.com](http://www.AffinityRealEstate.com) | email: [info@affinityrealestate.com](mailto:info@affinityrealestate.com) | office: 218-237-3333 | fax: 218-237-3377

**Affinity**  
REAL ESTATE INC

**\$624,900**  
MLS 7054250 Residential  
13520 Lake Sallie Drive  
Detroit Lakes MN 56501



website: [www.AffinityRealEstate.com](http://www.AffinityRealEstate.com) | email: [info@affinityrealestate.com](mailto:info@affinityrealestate.com) | office: 218-237-3333 | fax: 218-237-3377

**Affinity**  
REAL ESTATE INC

**\$624,900**  
MLS 7054250 Residential  
13520 Lake Sallie Drive  
Detroit Lakes MN 56501



website: [www.AffinityRealEstate.com](http://www.AffinityRealEstate.com) | email: [info@affinityrealestate.com](mailto:info@affinityrealestate.com) | office: 218-237-3333 | fax:218-237-3377



**\$624,900**  
MLS 7054250 Residential  
13520 Lake Sallie Drive  
Detroit Lakes MN 56501