



MLS 7054294 Residential

\$408,800

2,231 sq ft
4 bedrooms
3 baths

2416 Pearl Drive
Bemidji MN 56601

Status: Active

Description:

Beautifully updated and well cared for, this 4 bedroom, 3 bath home at 2416 Pearl Drive offers comfort, space, and some standout extras that are hard to find. The spacious owner's suite is a true highlight, and the finished detached triple garage adds tremendous value with room for vehicles, storage, hobbies, or a workshop setup. Since purchasing the home, the current owners have made numerous improvements, including new roofing on the house, both garages, and the shed, freshly painted LP Siding on the house, fresh paint on the garage & shed, updated light fixtures, and finishing the detached garage. Inside, you'll also appreciate details like solid surface countertops, stainless steel appliances, updated bathrooms, and charming design touches throughout. The backyard offers plenty of space to enjoy and the location puts you close to Lake Bemidji, the Country Club, the State Park, and Movil Maze.

Additional Details:

| | |
|------------------------|-----------|
| Year Built | 2001 |
| Lot Acres | 1.03 |
| Lot Dimensions | 150 x 300 |
| Garage Stalls | 5 |
| School District | 1386 |
| Taxes | \$3,056 |
| Taxes with Assessments | \$3,056 |
| Tax Year | 2025 |

Additional Features:

Basement: Finished **Fuel:** Array **Garage:** 5 **Heat:** Forced Air **Sewer:** Septic System Compliant - Yes, Tank with Drainage Field **Water:** 4-Inch Submersible, Well **Air Conditioning:** Central Air

Driving Directions:

North on Bemidji Ave, East on Sumac, Immediate Right on Country C



Listed By:
Real Broker, LLC

Affinity Real Estate Inc. participates in the Regional Multiple Listing Service of Minnesota, Inc Broker Reciprocity (sm) program, allowing us to display other broker's listings on our website. All properties are subject to prior sale, change or withdrawal.



Call Affinity Real Estate

218-237-3333

info@affinityrealestate.com



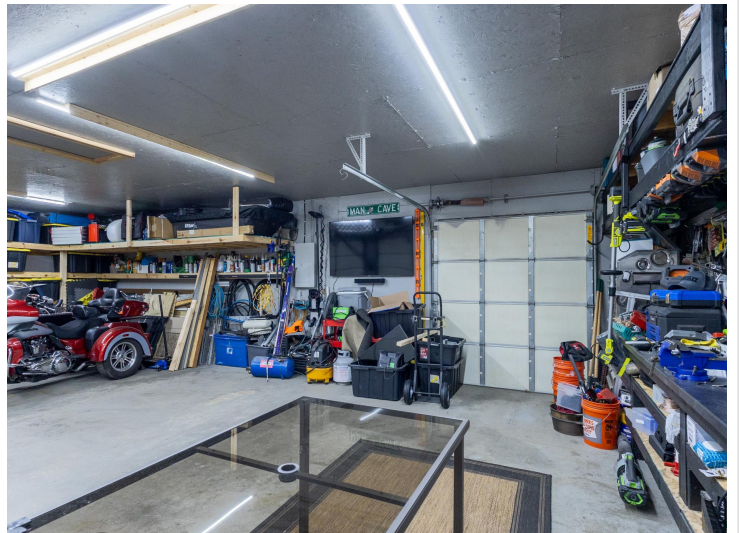
Affinity Real Estate - 600 Park Avenue South - Park Rapids MN 56470



website: www.AffinityRealEstate.com | email: info@affinityrealestate.com | office: 218-237-3333 | fax:218-237-3377

Affinity
REAL ESTATE INC

\$408,800
MLS 7054294 Residential
2416 Pearl Drive
Bemidji MN 56601



website: www.AffinityRealEstate.com | email: info@affinityrealestate.com | office: 218-237-3333 | fax:218-237-3377



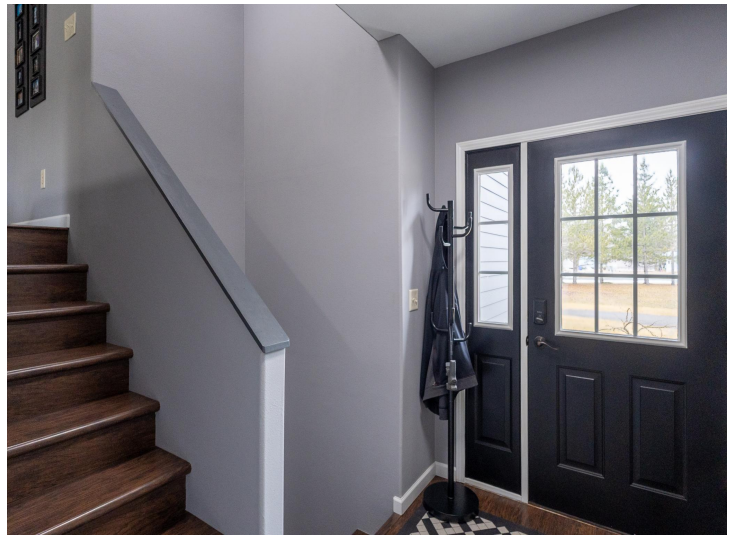
\$408,800
MLS 7054294 Residential
2416 Pearl Drive
Bemidji MN 56601



website: www.AffinityRealEstate.com | email: info@affinityrealestate.com | office: 218-237-3333 | fax:218-237-3377

Affinity
REAL ESTATE INC

\$408,800
MLS 7054294 Residential
2416 Pearl Drive
Bemidji MN 56601



website: www.AffinityRealEstate.com | email: info@affinityrealestate.com | office: 218-237-3333 | fax: 218-237-3377

Affinity
REAL ESTATE INC

\$408,800
MLS 7054294 Residential
2416 Pearl Drive
Bemidji MN 56601



website: www.AffinityRealEstate.com | email: info@affinityrealestate.com | office: 218-237-3333 | fax:218-237-3377

Affinity
REAL ESTATE INC

\$408,800
MLS 7054294 Residential
2416 Pearl Drive
Bemidji MN 56601



website: www.AffinityRealEstate.com | email: info@affinityrealestate.com | office: 218-237-3333 | fax: 218-237-3377

Affinity
REAL ESTATE INC

\$408,800
MLS 7054294 Residential
2416 Pearl Drive
Bemidji MN 56601



website: www.AffinityRealEstate.com | email: info@affinityrealestate.com | office: 218-237-3333 | fax: 218-237-3377

Affinity
REAL ESTATE INC

\$408,800
MLS 7054294 Residential
2416 Pearl Drive
Bemidji MN 56601



website: www.AffinityRealEstate.com | email: info@affinityrealestate.com | office: 218-237-3333 | fax: 218-237-3377

Affinity
REAL ESTATE INC

\$408,800
MLS 7054294 Residential
2416 Pearl Drive
Bemidji MN 56601



website: www.AffinityRealEstate.com | email: info@affinityrealestate.com | office: 218-237-3333 | fax:218-237-3377

Affinity
REAL ESTATE INC

\$408,800
MLS 7054294 Residential
2416 Pearl Drive
Bemidji MN 56601

website: www.AffinityRealEstate.com | email: info@affinityrealestate.com | office: 218-237-3333 | fax:218-237-3377



\$408,800
MLS 7054294 Residential
2416 Pearl Drive
Bemidji MN 56601