



MLS 7054591 Residential

\$499,900

1,414 sq ft
3 bedrooms
1 baths

10047 County Road 8
Brainerd MN 56401

Status: Active

Description:

Escape to the countryside with this spacious 3-bedroom, 1-bath farmhouse set on 40 beautiful acres of prime farmland. This charming property offers the perfect blend of rural tranquility and functional acreage, ideal for hobby farming, livestock, or simply enjoying wide-open spaces. Mature fruit trees provide seasonal beauty and fresh harvests, while the expansive acreage offers fertile ground for crops, gardens, or pasture.

The property also features large outbuildings with plenty of room for equipment storage, workshops, animals, or future projects. Inside, the farmhouse offers generous living spaces filled with country character and endless potential to make it your own. Whether you're looking for a working farm, a peaceful homestead, or an investment in productive land, this property is a rare opportunity to enjoy country living at its finest.

Additional Details:

Year Built	1969
Lot Acres	40.17
Lot Dimensions	1320x1320
Garage Stalls	6
School District	181
Taxes	\$1,010
Taxes with Assessments	\$1,010
Tax Year	2025

Additional Features:

Basement: Block, Egress Window(s), Full, Partially Finished **Fuel:** Propane **Garage:** 6 **Heat:** Forced Air **Sewer:** Tank with Drainage Field
Water: Drilled **Air Conditioning:** Central Air

Driving Directions:

Highway 18 East towards Garrison to Right on County Road 8 to property on Right



Listed By:
Aspen Real Estate Svcs, LLC

Affinity Real Estate Inc. participates in the Regional Multiple Listing Service of Minnesota, Inc Broker Reciprocity (sm) program, allowing us to display other broker's listings on our website. All properties are subject to prior sale, change or withdrawal.



Call Affinity Real Estate

218-237-3333

info@affinityrealestate.com



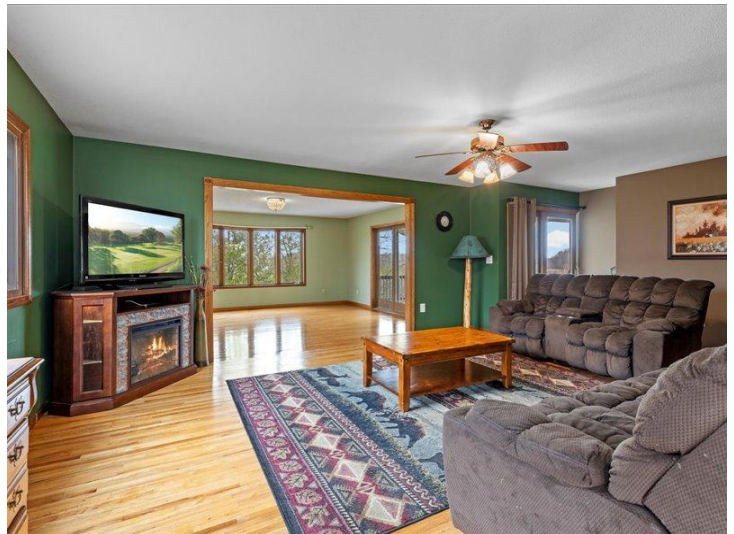
Affinity Real Estate - 600 Park Avenue South - Park Rapids MN 56470



website: www.AffinityRealEstate.com | email: info@affinityrealestate.com | office: 218-237-3333 | fax:218-237-3377



\$499,900
MLS 7054591 Residential
10047 County Road 8
Brainerd MN 56401



website: www.AffinityRealEstate.com | email: info@affinityrealestate.com | office: 218-237-3333 | fax:218-237-3377



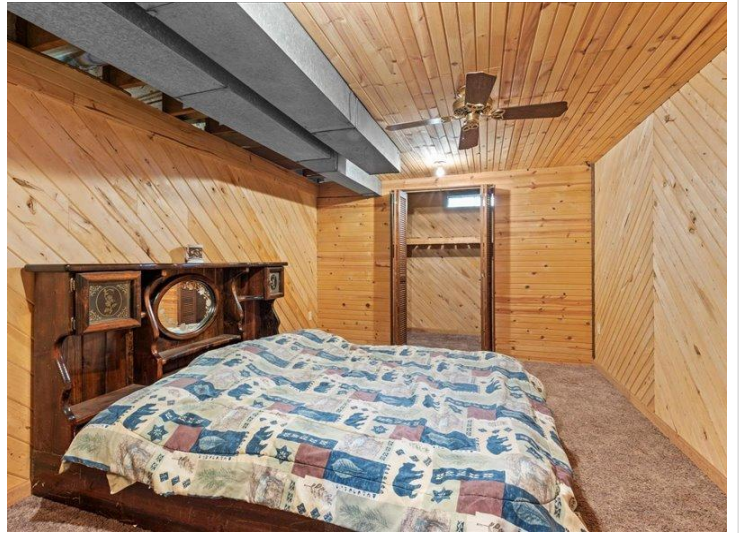
\$499,900
MLS 7054591 Residential
10047 County Road 8
Brainerd MN 56401



website: www.AffinityRealEstate.com | email: info@affinityrealestate.com | office: 218-237-3333 | fax:218-237-3377



\$499,900
MLS 7054591 Residential
10047 County Road 8
Brainerd MN 56401



website: www.AffinityRealEstate.com | email: info@affinityrealestate.com | office: 218-237-3333 | fax:218-237-3377



\$499,900
MLS 7054591 Residential
10047 County Road 8
Brainerd MN 56401



website: www.AffinityRealEstate.com | email: info@affinityrealestate.com | office: 218-237-3333 | fax:218-237-3377



\$499,900
MLS 7054591 Residential
10047 County Road 8
Brainerd MN 56401



website: www.AffinityRealEstate.com | email: info@affinityrealestate.com | office: 218-237-3333 | fax:218-237-3377

Affinity
REAL ESTATE INC

\$499,900
MLS 7054591 Residential
10047 County Road 8
Brainerd MN 56401



website: www.AffinityRealEstate.com | email: info@affinityrealestate.com | office: 218-237-3333 | fax:218-237-3377

Affinity
REAL ESTATE INC

\$499,900
MLS 7054591 Residential
10047 County Road 8
Brainerd MN 56401



website: www.AffinityRealEstate.com | email: info@affinityrealestate.com | office: 218-237-3333 | fax:218-237-3377



\$499,900
MLS 7054591 Residential
10047 County Road 8
Brainerd MN 56401