



MLS 7054649 Lake Land

\$299,900

Description:

A truly rare opportunity to own almost 4,000 feet of riverfront along the breathtaking Pine River — right where it meets the joins the Mississippi.

This incredible 32+acre parcel offers something truly rare: a stunning mix of flat, buildable land, open meadows, rich lowlands, and towering wooded high ground all in one extraordinary property. Build your perfect retreat, chase trophy whitetail, cast a line from the riverbank, launch your kayak, or simply walk the trails and soak in breathtaking river views that stretch as far as the eye can see. Every acre invites you to slow down, explore, and experience something truly special. This is more than a piece of property — this is a lifestyle. An outdoor enthusiast's dream come true.

This parcel is truly unique in that it includes two sections of land - a larger section to the south and a smaller section near the CR 11 bridge and public access to the Pine River.

Opportunities like this don't come around often. Schedule your private showing today.

Additional Details:

Lot Acres	32.18
Lot Dimensions	2342x1125x irregular shoreline
School District	182
Taxes	\$472
Taxes with Assessments	\$472
Tax Year	2026

Additional Features:

Driving Directions:

From Crosby, go N on St. Hwy 6. Turn L on CR 11. Turn L on CR 109. Turn L on CR 19. Turn L on Riverview Place. Property Straight ahead. From Crosslake, go S on CR 3. Turn E on CR 11. Turn R on CR 109. Go L on CR 19. Turn L on Riverview Place. Property straight ahead.



Listed By:
Coldwell Banker Crown Realtors

Affinity Real Estate Inc. participates in the Regional Multiple Listing Service of Minnesota, Inc Broker Reciprocity (sm) program, allowing us to display other broker's listings on our website. All properties are subject to prior sale, change or withdrawal.



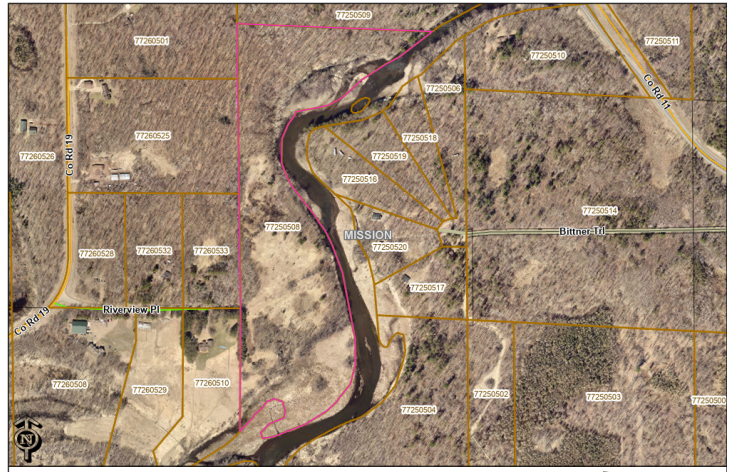
Call Affinity Real Estate

218-237-3333

info@affinityrealestate.com




Affinity Real Estate - 600 Park Avenue South - Park Rapids MN 56470



These data are provided on an "AS-IS" basis, without warranty of any type, expressed or implied, including but not limited to any warranty as to their performance, merchantability, or fitness for any particular purpose.

Main Section of Property

Date: 4/23/2026 Time: 5:33 PM




website: www.AffinityRealEstate.com | email: info@affinityrealestate.com | office: 218-237-3333 | fax:218-237-3377



\$299,900
 MLS 7054649 Lake Land
 TBD Riverview Place
 Merrifield MN 56465



website: www.AffinityRealEstate.com | email: info@affinityrealestate.com | office: 218-237-3333 | fax:218-237-3377



\$299,900
MLS 7054649 Lake Land
TBD Riverview Place
Merrifield MN 56465



website: www.AffinityRealEstate.com | email: info@affinityrealestate.com | office: 218-237-3333 | fax:218-237-3377



\$299,900
MLS 7054649 Lake Land
TBD Riverview Place
Merrifield MN 56465



website: www.AffinityRealEstate.com | email: info@affinityrealestate.com | office: 218-237-3333 | fax:218-237-3377



\$299,900
MLS 7054649 Lake Land
TBD Riverview Place
Merrifield MN 56465



website: www.AffinityRealEstate.com | email: info@affinityrealestate.com | office: 218-237-3333 | fax:218-237-3377




\$299,900
MLS 7054649 Lake Land
TBD Riverview Place
Merrifield MN 56465



These data are provided on an "AS-IS" basis, without warranty of any type, expressed or implied, including but not limited to any warranty as to their performance, merchantability, or fitness for any particular purpose.

Northern Section of Property

Date: 4/23/2026 Time: 5:31 PM




website: www.AffinityRealEstate.com | email: info@affinityrealestate.com | office: 218-237-3333 | fax: 218-237-3377



\$299,900
 MLS 7054649 Lake Land
 TBD Riverview Place
 Merrifield MN 56465



website: www.AffinityRealEstate.com | email: info@affinityrealestate.com | office: 218-237-3333 | fax:218-237-3377



\$299,900
MLS 7054649 Lake Land
TBD Riverview Place
Merrifield MN 56465