



MLS 7054709 Lake Home

\$575,000

2,960 sq ft
3 bedrooms
3 baths

16498 Park Estates Drive
Brainerd MN 56401

Waterfront: Clearwater

Status: Active

Description:

Welcome Home to this beauty located on Clearwater Lake! Blanketed in a woody setting, this townhome offers lake views, deeded boat slip and loads of recreational fun while skipping the exterior maintenance and upkeep of a lake home. Walking through the front door you're greeted by soaring ceilings. Hardwood floors throughout the main level and craftsman natural woodwork compliment the open floor plan. The spacious kitchen features stainless steel appliances, solid surface countertops, pantry and an abundance of storage and countertop space. Main level primary bedroom with walk in closet and main level laundry make this home a one level living dream! Upper level features two large bedrooms (with CA Closets), loft area and bonus space for office, hobby or bunk room. Finished lower level with 3/4 bathroom has egress window and offers additional living or sleeping space. New furnace and water heater. Being a part of this small HOA gives you access to a lakeside community room, community garden, sand beach, boat launch, community dock, lakeside restrooms, green space, fire pit, 465 feet of shoreline and don't forget your unencumbered deeded boat slip! Clearwater Lake is spring fed and low traffic with a camp owning 1/3 of shoreline; great for fishing small mouth, sunnies and walleyes! Conveniently located near Crosby and the Cuyuna Range with miles of bike trails, shopping, restaurants and more!

Additional Details:

Year Built	2006
Lot Acres	0.06
Lot Dimensions	42x58
Garage Stalls	2
School District	181
Taxes	\$2,864
Taxes with Assessments	\$2,864
Tax Year	2025

Additional Features:

Basement: Block, Egress Window(s), Finished, Full **Fuel:** Propane **Garage:** 2 **Heat:** Forced Air, Fireplace(s) **Sewer:** Septic System Compliant - Yes, Shared Septic **Water:** Drilled, Shared System, Well **Air Conditioning:** Central Air

Driving Directions:

1870 Park Estates Dr. Home on Park Estates Dr. Home on RH side.
Welcome Home Productions, LLC



Affinity Real Estate Inc. participates in the Regional Multiple Listing Service of Minnesota, Inc Broker Reciprocity (sm) program, allowing us to display other broker's listings on our website. All properties are subject to prior sale, change or withdrawal.



Call Affinity Real Estate

218-237-3333

info@affinityrealestate.com



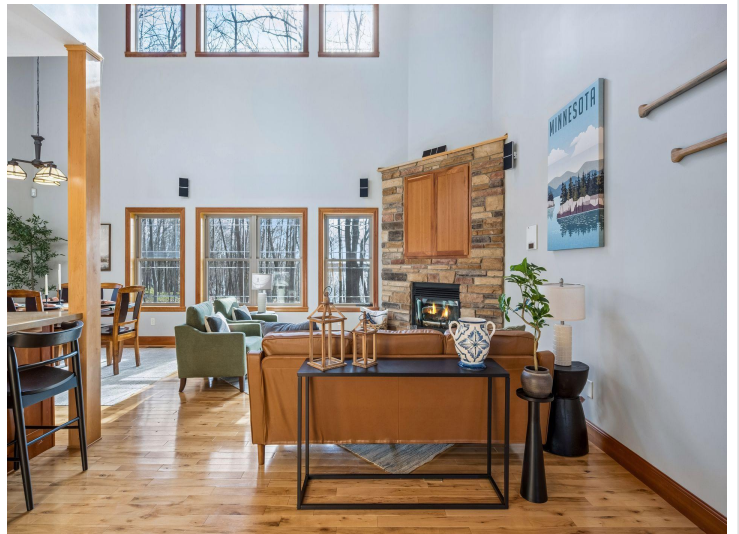
Affinity Real Estate - 600 Park Avenue South - Park Rapids MN 56470



website: www.AffinityRealEstate.com | email: info@affinityrealestate.com | office: 218-237-3333 | fax: 218-237-3377

Affinity
REAL ESTATE INC

\$575,000
MLS 7054709 Lake Home
16498 Park Estates Drive
Brainerd MN 56401



website: www.AffinityRealEstate.com | email: info@affinityrealestate.com | office: 218-237-3333 | fax: 218-237-3377

Affinity
REAL ESTATE INC

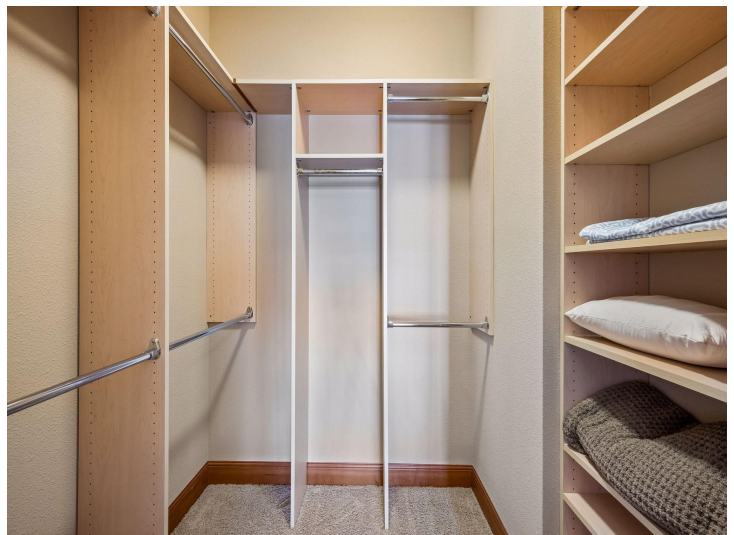
\$575,000
MLS 7054709 Lake Home
16498 Park Estates Drive
Brainerd MN 56401



website: www.AffinityRealEstate.com | email: info@affinityrealestate.com | office: 218-237-3333 | fax: 218-237-3377

Affinity
REAL ESTATE INC

\$575,000
MLS 7054709 Lake Home
16498 Park Estates Drive
Brainerd MN 56401



website: www.AffinityRealEstate.com | email: info@affinityrealestate.com | office: 218-237-3333 | fax:218-237-3377



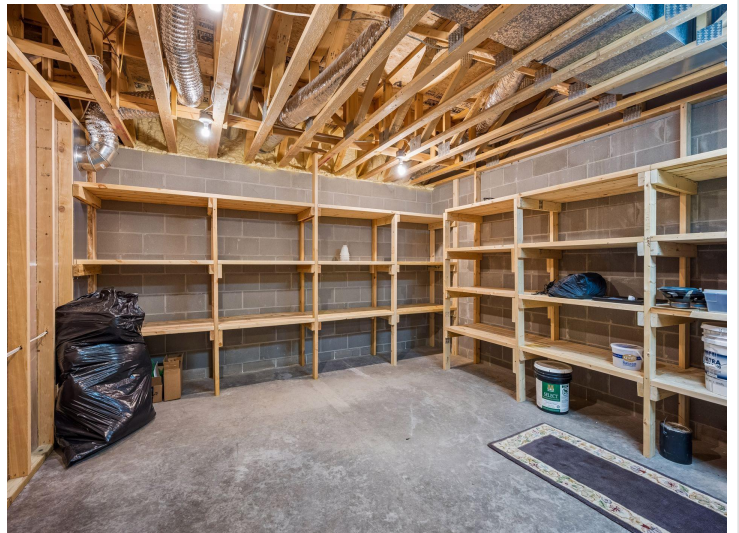
\$575,000
MLS 7054709 Lake Home
16498 Park Estates Drive
Brainerd MN 56401



website: www.AffinityRealEstate.com | email: info@affinityrealestate.com | office: 218-237-3333 | fax:218-237-3377



\$575,000
MLS 7054709 Lake Home
16498 Park Estates Drive
Brainerd MN 56401



website: www.AffinityRealEstate.com | email: info@affinityrealestate.com | office: 218-237-3333 | fax:218-237-3377

Affinity
REAL ESTATE INC

\$575,000
MLS 7054709 Lake Home
16498 Park Estates Drive
Brainerd MN 56401



website: www.AffinityRealEstate.com | email: info@affinityrealestate.com | office: 218-237-3333 | fax: 218-237-3377



\$575,000
MLS 7054709 Lake Home
16498 Park Estates Drive
Brainerd MN 56401



website: www.AffinityRealEstate.com | email: info@affinityrealestate.com | office: 218-237-3333 | fax:218-237-3377



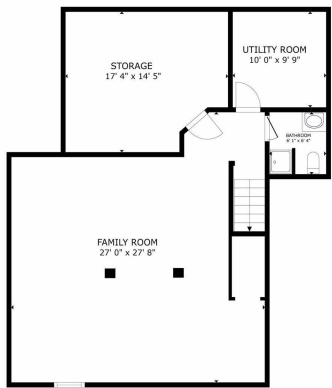
\$575,000
MLS 7054709 Lake Home
16498 Park Estates Drive
Brainerd MN 56401



website: www.AffinityRealEstate.com | email: info@affinityrealestate.com | office: 218-237-3333 | fax:218-237-3377

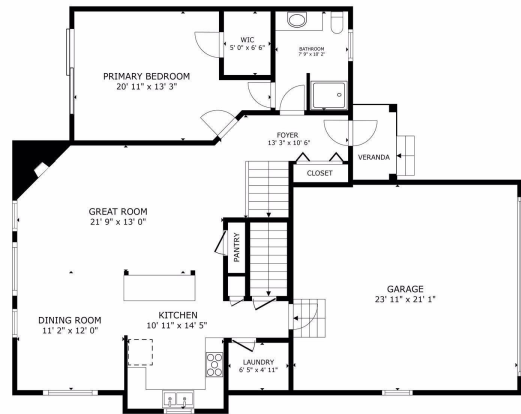


\$575,000
MLS 7054709 Lake Home
16498 Park Estates Drive
Brainerd MN 56401



FLOOR 1

GROSS INTERNAL AREA
FLOOR 1: 1,049 sq.ft. FLOOR 2: 1,182 sq.ft. FLOOR 3: 897 sq.ft.
EXCLUDED AREAS: GARAGE 302 sq.ft. VERANDA 35 sq.ft.
TOTAL: 3,131 sq.ft.
SIZES AND DIMENSIONS ARE APPROXIMATE, ACTUAL MAY VARY.



FLOOR 2

GROSS INTERNAL AREA
FLOOR 1: 1,049 sq.ft. FLOOR 2: 1,182 sq.ft. FLOOR 3: 897 sq.ft.
EXCLUDED AREAS: GARAGE 302 sq.ft. VERANDA 35 sq.ft.
TOTAL: 3,131 sq.ft.
SIZES AND DIMENSIONS ARE APPROXIMATE, ACTUAL MAY VARY.

website: www.AffinityRealEstate.com | email: info@affinityrealestate.com | office: 218-237-3333 | fax: 218-237-3377



\$575,000
MLS 7054709 Lake Home
16498 Park Estates Drive
Brainerd MN 56401