



MLS 7054739 Land

\$44,900

5.09 Acres
Rough Grade

25524 Smokey Hollow Drive
Laporte MN 56461

Status: Active

Description:

Build your dream home on this beautiful 5.09-acre parcel just south of Bemidji, combination of level ground, privacy with a sense of community. Tucked away in a quiet, peaceful private road, this property provides the perfect setting for those looking to enjoy country living without sacrificing proximity to town. The land features a very level layout, making it ideal for building, along with a mix of open space and surrounding trees that offer both usability and natural privacy. Whether you're looking to build now or invest for the future, this parcel offers excellent potential. An additional 5.02 Ac available for \$49,900 mls # 7053478

Additional Details:

Lot Acres	5.09
Lot Dimensions	336x995
School District	1386
Taxes	\$288
Taxes with Assessments	\$288
Tax Year	2025

Additional Features:

Driving Directions:

From Bemidji, south on Hwy 71 for 6 miles, to east on 470th Street for 1.5 miles, to south on 255th Ave for half mile. Property is on the left (east) side of the road.



Listed By:
218 Real Estate

Affinity Real Estate Inc. participates in the Regional Multiple Listing Service of Minnesota, Inc Broker Reciprocity (sm) program, allowing us to display other broker's listings on our website. All properties are subject to prior sale, change or withdrawal.



Call Affinity Real Estate

218-237-3333

info@affinityrealestate.com



Affinity Real Estate - 600 Park Avenue South - Park Rapids MN 56470



website: www.AffinityRealEstate.com | email: info@affinityrealestate.com | office: 218-237-3333 | fax:218-237-3377



\$44,900
MLS 7054739 Land
25524 Smokey Hollow Drive
Laporte MN 56461



website: www.AffinityRealEstate.com | email: info@affinityrealestate.com | office: 218-237-3333 | fax:218-237-3377



\$44,900
MLS 7054739 Land
25524 Smokey Hollow Drive
Laporte MN 56461



website: www.AffinityRealEstate.com | email: info@affinityrealestate.com | office: 218-237-3333 | fax:218-237-3377



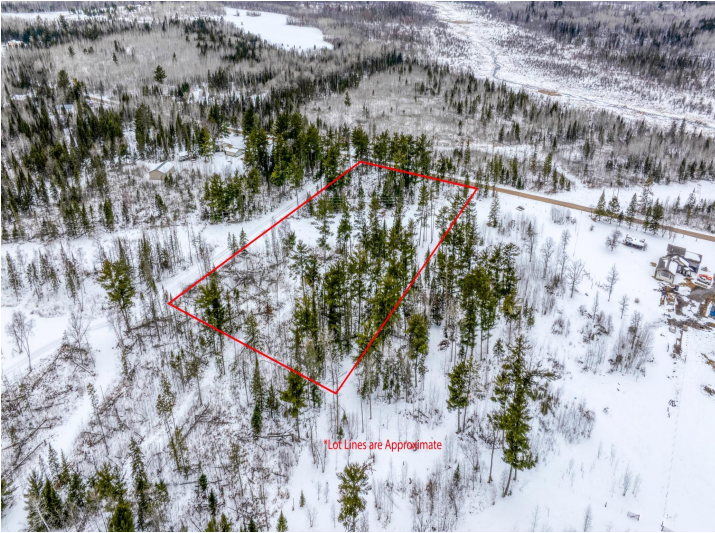
\$44,900
MLS 7054739 Land
25524 Smokey Hollow Drive
Laporte MN 56461



website: www.AffinityRealEstate.com | email: info@affinityrealestate.com | office: 218-237-3333 | fax:218-237-3377



\$44,900
MLS 7054739 Land
25524 Smokey Hollow Drive
Laporte MN 56461



website: www.AffinityRealEstate.com | email: info@affinityrealestate.com | office: 218-237-3333 | fax:218-237-3377



\$44,900
MLS 7054739 Land
25524 Smokey Hollow Drive
Laporte MN 56461