



MLS 7054990 Residential

\$239,900

2,409 sq ft
3 bedrooms
3 baths

701 Douglas Avenue
Henning MN 56551

Status: Active



Description:

Welcome to this character-filled home nestled on a large corner lot in the heart of Henning—just a short walk to the grocery store, bank, and local dining. If you're looking for space both inside and out, this is the one!

This classic home boasts beautiful original woodwork, an elegant staircase, and charming built-ins that add timeless appeal throughout. The 2-stall attached garage is perfect for everyday convenience, and a bonus new attached 16'x30' shop—with pull-through garage doors.

Inside, you'll find generously sized rooms, the bedrooms all have walk in closets, and a layout full of potential. The basement is clean and functional, currently used as a storage and canning area, but offers ample opportunity to finish and add even more living space to suit your needs.

Whether you're looking to enjoy a peaceful small-town lifestyle or need room to grow, this property has it all—space, charm, and unbeatable location.

Don't miss your chance to make this Henning gem your own!

Additional Details:

Year Built	1918
Lot Acres	0.43
Lot Dimensions	irregular
Garage Stalls	3
School District	1945
Taxes	\$2,566
Taxes with Assessments	\$2,566
Tax Year	2025

Additional Features:

Basement: Partial **Fuel:** Array **Garage:** 3 **Heat:** Baseboard, Forced Air **Sewer:** City Sewer/Connected **Water:** City Water/Connected **Air**

Air
Listed By:
Hinkle Realty

Affinity Real Estate Inc. participates in the Regional Multiple Listing Service of Minnesota, Inc Broker Reciprocity (sm) program, allowing us to display other broker's listings on our website. All properties are subject to prior sale, change or withdrawal.



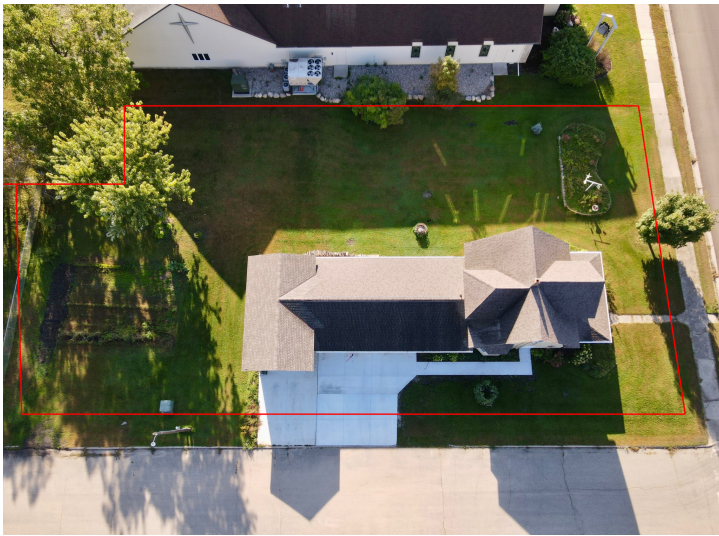
Call Affinity Real Estate

218-237-3333

info@affinityrealestate.com



Affinity Real Estate - 600 Park Avenue South - Park Rapids MN 56470



website: www.AffinityRealEstate.com | email: info@affinityrealestate.com | office: 218-237-3333 | fax:218-237-3377

Affinity
REAL ESTATE INC

\$239,900
MLS 7054990 Residential
701 Douglas Avenue
Henning MN 56551



website: www.AffinityRealEstate.com | email: info@affinityrealestate.com | office: 218-237-3333 | fax:218-237-3377



\$239,900
MLS 7054990 Residential
701 Douglas Avenue
Henning MN 56551



website: www.AffinityRealEstate.com | email: info@affinityrealestate.com | office: 218-237-3333 | fax: 218-237-3377

Affinity
REAL ESTATE INC

\$239,900
MLS 7054990 Residential
701 Douglas Avenue
Henning MN 56551



website: www.AffinityRealEstate.com | email: info@affinityrealestate.com | office: 218-237-3333 | fax:218-237-3377

Affinity
REAL ESTATE INC

\$239,900
MLS 7054990 Residential
701 Douglas Avenue
Henning MN 56551



website: www.AffinityRealEstate.com | email: info@affinityrealestate.com | office: 218-237-3333 | fax: 218-237-3377

Affinity
REAL ESTATE INC

\$239,900
MLS 7054990 Residential
701 Douglas Avenue
Henning MN 56551



website: www.AffinityRealEstate.com | email: info@affinityrealestate.com | office: 218-237-3333 | fax:218-237-3377

Affinity
REAL ESTATE INC

\$239,900
MLS 7054990 Residential
701 Douglas Avenue
Henning MN 56551



website: www.AffinityRealEstate.com | email: info@affinityrealestate.com | office: 218-237-3333 | fax:218-237-3377



\$239,900
MLS 7054990 Residential
701 Douglas Avenue
Henning MN 56551